

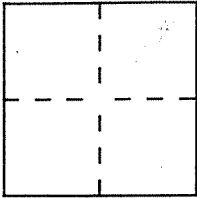
CORNER RECORD

Document Number A.P.N. 027-271-10

City of MILL VALLEY

County of MARIN, California

Brief Legal Description LOT 5 PER 14 R.M.2



CORNER TYPE

COORDINATES (Optional)

Government Corner Control
Meander Property
Rancho Other
Date of Survey JULY 1998

N. _____
E. _____
Zone _____ Datum _____
Elev. _____

Corner — Left as found Found and tagged Established Reestablished Rebuilt

Identification and type of corner found: Evidence used to identify or procedure used to establish or reestablish the corner:

= SEE OVER =

A description of the physical condition of the monument as found and as set or reset:

= SEE OVER =

SURVEYOR'S STATEMENT

This Corner Record was prepared by me or under my direction in conformance with the Land Surveyors' Act on NOVEMBER 15 1998.

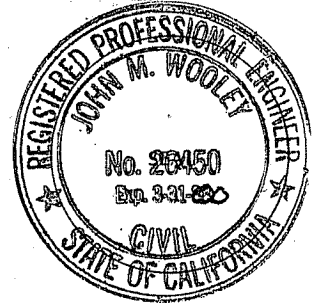
Signed David Contreras (L.S.) or R.C.E. Number 5065



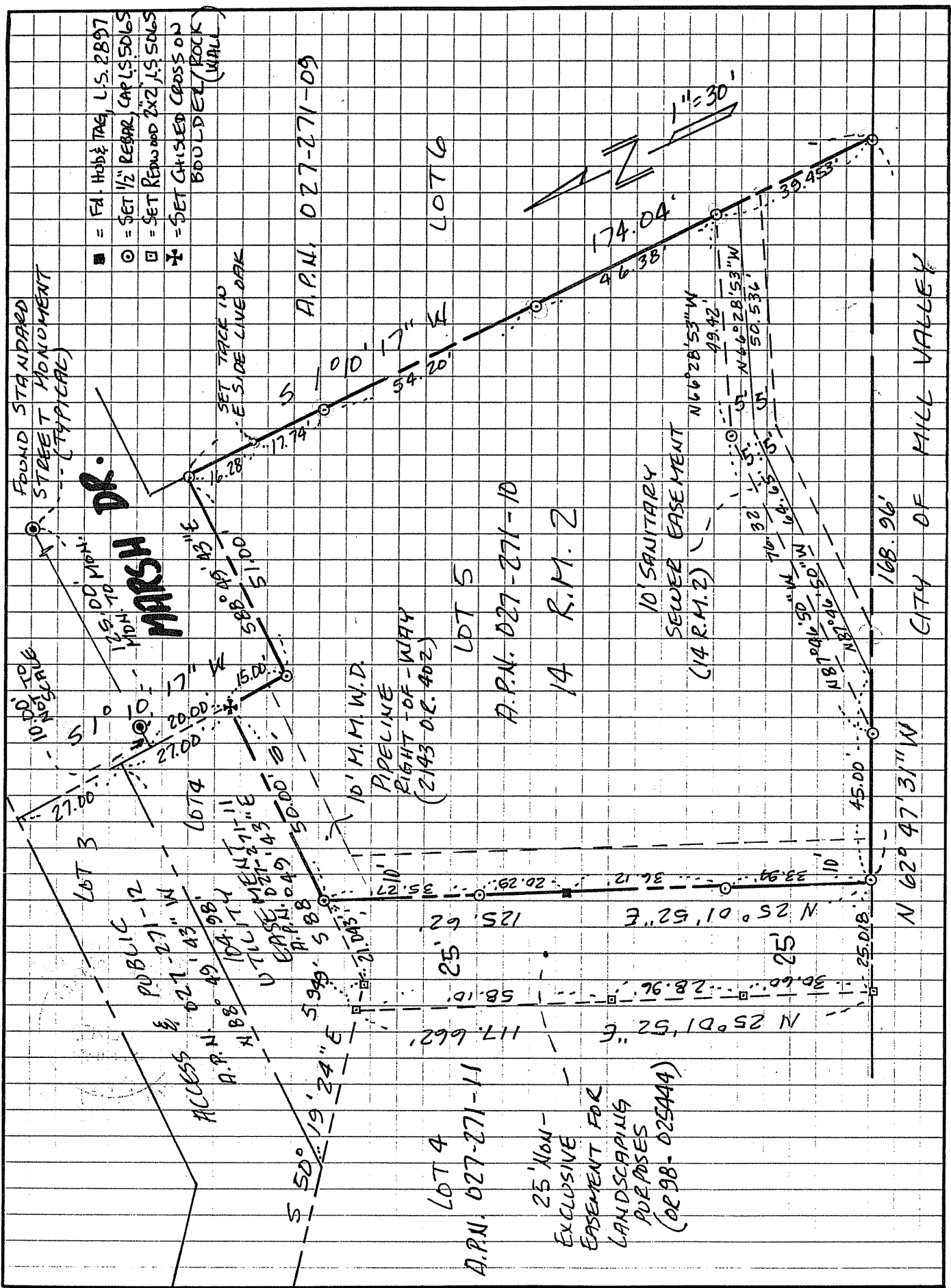
COUNTY SURVEYOR'S STATEMENT

This Corner Record was received DECEMBER 9 1998 and examined and filed DECEMBER 10 1998.

Signed John M. Woolley Title DEPUTY



County Surveyor's Comment _____



- = Fd. Hub & Tag, L.S. 2897
- = SET 1/2" REBAR CAP L.S. 5065
- = SET REBAR 2x2 L.S. 5065
- ✱ = SET CHISEL CROSS ON BOULDER (WAL)

FOUND STANDARD STREET MONUMENT (TYPICAL)

DR. MARSH

LOT 3
PUBLIC ACCESS
A.P.N. 027-271-43
W 04.98'
E 04.98'
N 04.98'
E 04.98'
W 04.98'

LOT 4
A.P.N. 027-271-11
S 50° 19' 24" E 19.24'
E 21.04'
W 21.04'

LOT 5
A.P.N. 027-271-10
14 R.M. 2
10' M.M.W.D. PIPELINE RIGHT-OF-WAY (2143 O.R. 402)

LOT 6
A.P.N. 027-271-09

25' NON-EXCLUSIVE EASEMENT FOR LANDSCAPING PURPOSES (OR 98-025444)

10' SANITARY SEWER EASEMENT (14 R.M. 2)

CITY OF MILL VALLEY

174.04'
46.38'
39.453'

1" = 30'