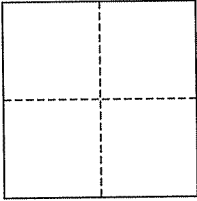


CORNER RECORD

City of Mill Valley

Document Number AP# 027-231-09
County of Marin, California

Brief Legal Description Lots 143,150,&151, 3 RM 79 and 1998 RS 96



CORNER TYPE

Government Corner Control
Meander Property
Rancho Other
Date of Survey September 12, 2008

COORDINATES (Optional)

N. _____
E. _____
Zone _____ NAD27 NAD83
NAD83 Epoch _____
Elev. _____
Vert. Datum: NGVD29 NAVD88
Meas. Units: Metric Imperial

Corner- Left as found Found and tagged Established Reestablished Rebuilt

Identification and type of corner found: Evidence used to identify or procedure used to establish or reestablish the corner:
Found Rebar&cap, LS 4694, per 1998 RS 96, as shown and noted.

A description of the physical condition of the monument as found and as set or reset: Reset obliterated Rebar&Cap, LS 4694, on the South-easterly corner of Lot 151, 3 RM 79, per 1998 RS 96; also set Cross-cuts at the intersection of the adjacent Property Lines and the concrete slab of the new construction, as shown.

SURVEYOR'S STATEMENT

This corner Record was prepared by me or under my direction in conformance with the Land Surveyor's Act on October 31, 2008

Signed Jay H P.L.S. or R.C.E. No. 30465



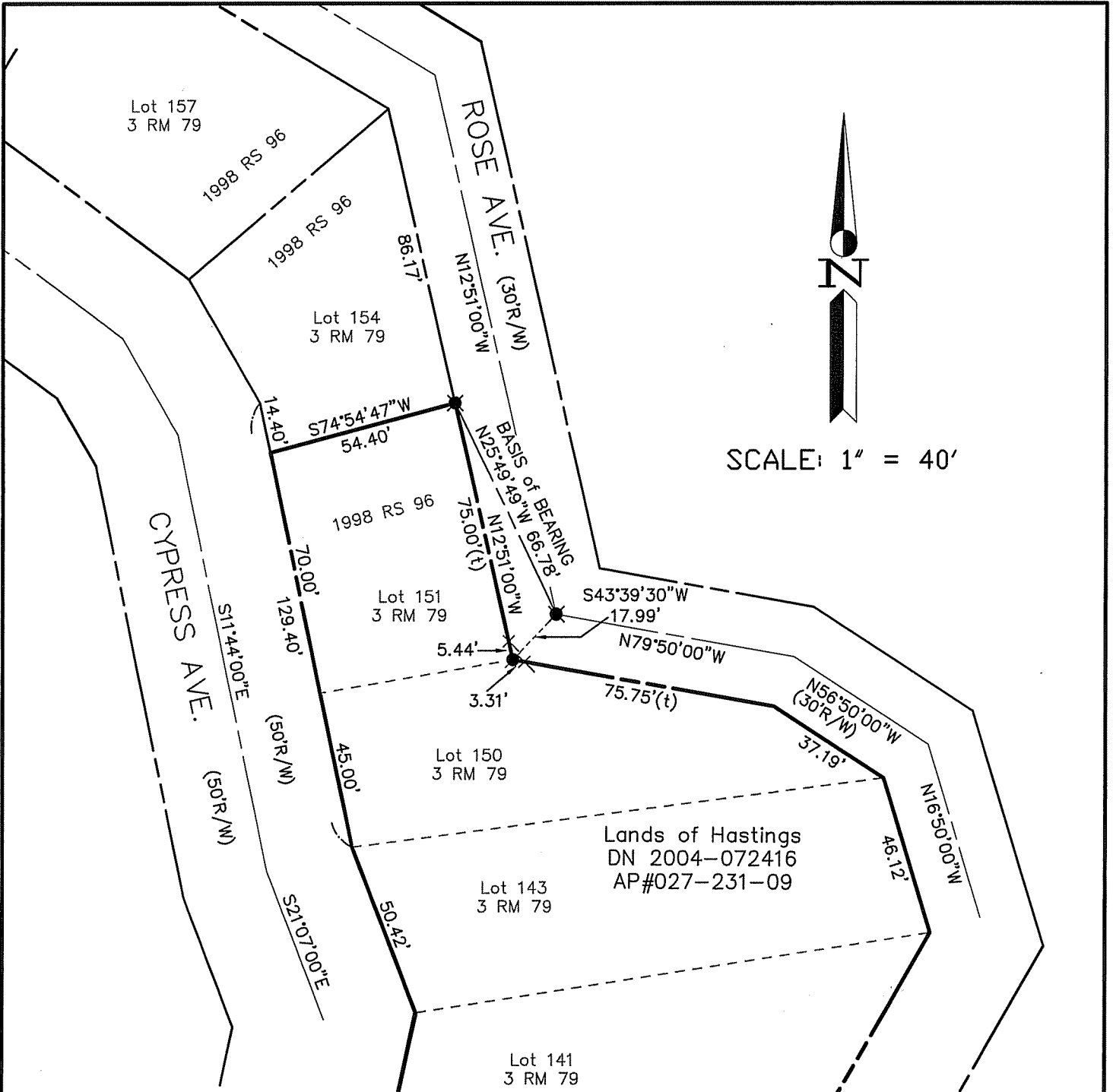
COUNTY SURVEYOR'S STATEMENT

This Corner Record was received NOVEMBER 5, 2008
and examined and filed NOVEMBER 19, 2008

Signed _____ P.L.S. or R.C.E. No. 7128
Title COUNTY SURVEYOR



County Surveyor's Comment _____



LEGEND

- ✱ FOUND REBAR & CAP, LS 4694, per 1998 RS 96
- ∅ SET NAIL & TAG, RCE 30465
- × SET CROSS-CUT

Note: All distances are in feet and decimals thereof.

SHEET	1	OF	1
SCALE:	1" = 40'	DESIGN:	PR
DATE:	Oct. 2008	DRAWN:	PR
FILE:	2007-021	CHECKED:	J.L.H

2007-021\DWG\07-021-BASE,COR-REC

J.L. ENGINEERING
 CIVIL ENGINEERS-LAND SURVEYORS
 1539 4th ST., SAN RAFAEL, CA. 94901 (415) 457-6647

Corner Record
 Lands of Hastings - 335 Rose Ave., Mill Valley
 APN 027-231-01, Mill Valley, Marin County, CA