

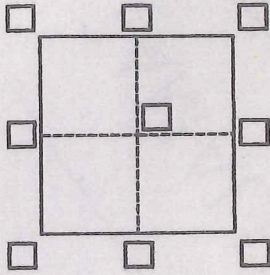
CORNER RECORD

Agency Index DPW # 18-018

Document Number 027-221-53

City of MILL VALLEY County of MARIN, California

Brief Legal Description APN 027-221-53



CORNER TYPE

- Government Corner Control
 Meander Property
 Rancho Other

Date of Survey March 12, 2018

COORDINATES (Optional)

- N. _____ E. _____
 Elevation _____
 Units Metric U.S. Survey Foot
 Horizontal Datum _____
 Zone _____ Epoch Date _____
 Vertical Datum _____
 Complies with Public Resources Code §§8801-8819
 Complies with Public Resources Code §§8890-8902

- PLS Act Ref.: 8765(d) 8771 8773 Other:
 Corner/Monument: Left as found Established Rebuilt Pre-Construction
 Found and tagged Reestablished Referenced Post-Construction

Narrative of corner identified and monument as found, set, reset, replaced, or removed:
 See sheet #2 for description(s):

BASED ON THE MONUMENTS FOUND PER 2013 MAPS 160, I SET A PROPERTY LINE POINTS: AN IRON BAR AND CAP LS 5290, A MAG NAIL AND BRASS TAG LS 5290, AND A 3/4" IRON PIPE AND CAP LS 5290. SEE SHEET TWO FOR DETAILS.

SURVEYOR'S STATEMENT

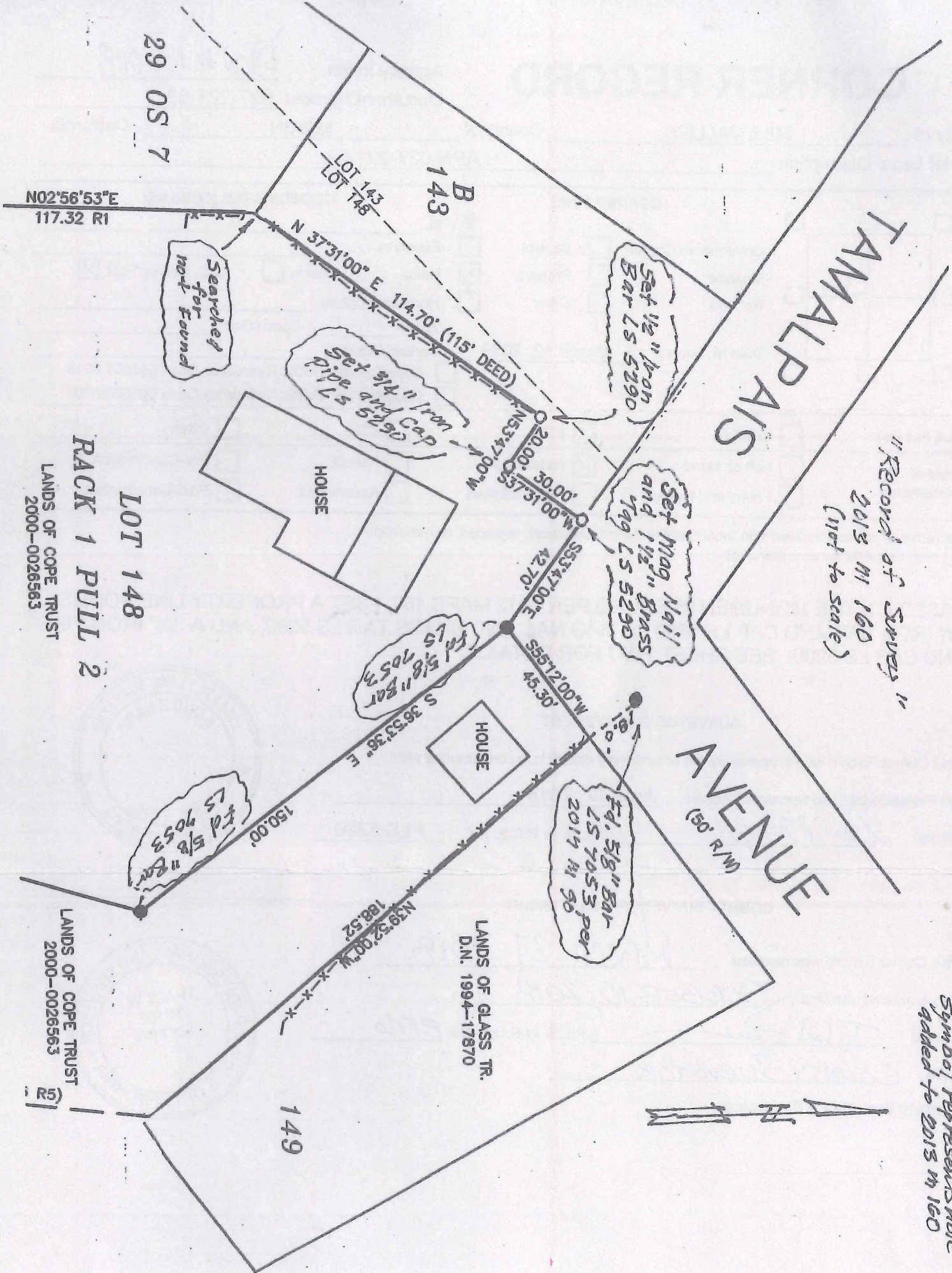
This Corner Record was prepared by me or under my direction in conformance with the Professional Land Surveyors' Act on June 12, 2018.
 Signed David Harp P.L.S. or R.C.E. No. PLS 5290



COUNTY SURVEYOR'S STATEMENT

This Corner Record was received MARCH 27, 2018
 and examined and filed OCTOBER 10, 2018.
 Signed T. W. Park P.L.S. or R.C.E. No. 8176
 Title COUNTY SURVEYOR
 County Surveyor's Comment _____





"Record of Survey"
 2013 M 160
 (Not to Scale)

LOT 148
 RACK 1 PULL 2
 LANDS OF COPE TRUST
 2000-0026563

LANDS OF COPE TRUST
 2000-0026563

Note:  Text inside this symbol represents note added to 2013 M 160

