

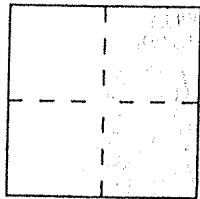
CORNER RECORD

Document Number APN 27-212-28

City of Mill Valley

County of Marin, California

Brief Legal Description AP # 27-212-28



CORNER TYPE

- Government Corner
- Meander
- Rancho
- Date of Survey 5/11/11
- Control
- Property
- Other

COORDINATES (Optional)

N. _____
 E. _____
 Zone _____ Datum _____
 Elev. _____

Corner — Left as found Found and tagged Established Reestablished Rebuilt

Identification and type of corner found: Evidence used to identify or procedure used to establish or reestablish the corner:

Found monuments per 2002 Maps, Page 93

A description of the physical condition of the monument as found and as set or reset:

Set nail & tag points in pavement and one 1/2" bar & cap LS 5290 for corner marker.

SURVEYOR'S STATEMENT

This Corner Record was prepared by me or under my direction in conformance with the Land Surveyors' Act on 5/12/11

Signed David Hays L.S. or R.C.E. Number LS 5290

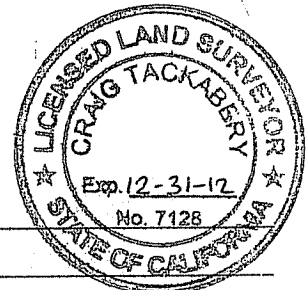


COUNTY SURVEYOR'S STATEMENT

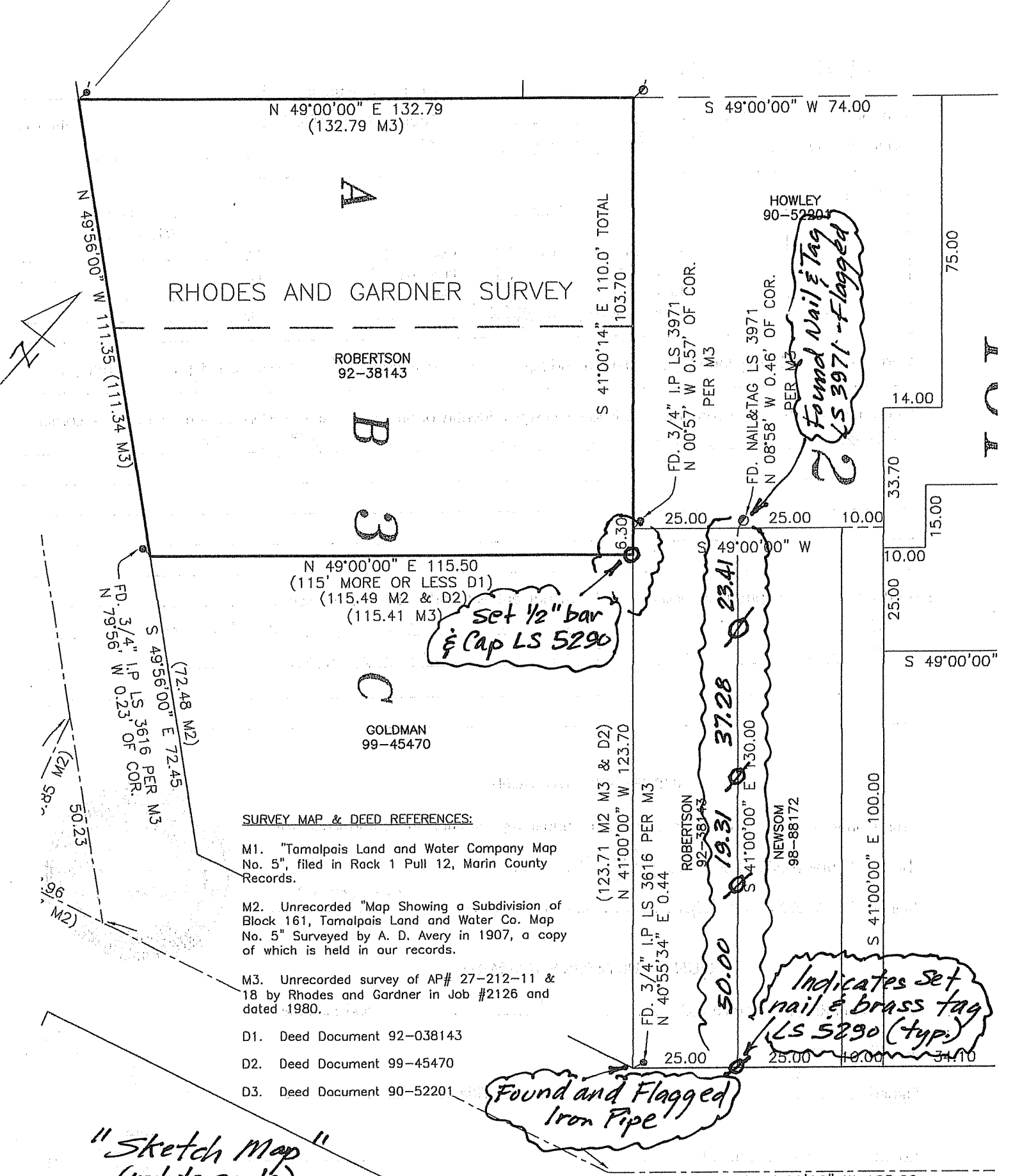
This Corner Record was received 5-13-2011 and examined

and filed JUNE 22, 2011

Signed _____ Title COUNTY SURVEYOR



County Surveyor's Comment _____



SURVEY MAP & DEED REFERENCES:

- M1. "Tamalpais Land and Water Company Map No. 5", filed in Rack 1 Pull 12, Marin County Records.
- M2. Unrecorded "Map Showing a Subdivision of Block 161, Tamalpais Land and Water Co. Map No. 5" Surveyed by A. D. Avery in 1907, a copy of which is held in our records.
- M3. Unrecorded survey of AP# 27-212-11 & 18 by Rhodes and Gardner in Job #2126 and dated 1980.
- D1. Deed Document 92-038143
- D2. Deed Document 99-45470
- D3. Deed Document 90-52201

"Sketch Map"
 (not to scale)
 Being a portion of 2002 Maps 093,
 said survey done by this firm.
 Note: text in cloud added to original map.

EUGENE STREET