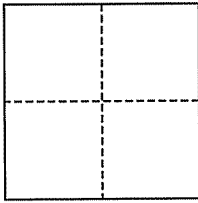


**CORNER RECORD**

Document Number APN 027-211-20  
County of Marin, California

City of Mill Valley

Brief Legal Description Being Parcel B of 05 OS 50 (APN# 027-211-20)



**CORNER TYPE**

Government Corner  Control   
Meander  Property   
Rancho  Other   
Date of Survey \_\_\_\_\_

**COORDINATES (Optional)**

N. \_\_\_\_\_  
E. \_\_\_\_\_  
Zone \_\_\_\_\_ NAD27  NAD83   
NAD83 Epoch \_\_\_\_\_  
Elev. \_\_\_\_\_  
Vert. Datum: NGVD29  NAVD88   
Meas. Units: Metric  Imperial

**Corner-** Left as found  Found and tagged  Established  Reestablished  Rebuilt

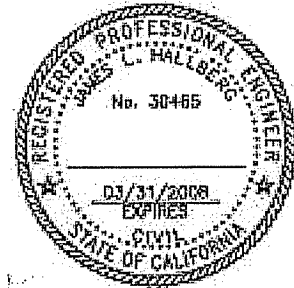
Identification and type of corner found: Evidence used to identify or procedure used to establish or reestablish the corner:

Found iron Pipes and cross-cut per 05-OS-50

A description of the physical condition of the monument as found and as set or reset: Set 1/2" rebar & cap, stamped R.C.E. 30465. Set nail & tag, R.C.E. 30465.

**SURVEYOR'S STATEMENT**

This corner Record was prepared by me or under my direction in conformance with the Land Surveyor's Act on August 22, 2007  
Signed \_\_\_\_\_ P.L.S. or R.C.E. No. 30465



**COUNTY SURVEYOR'S STATEMENT**

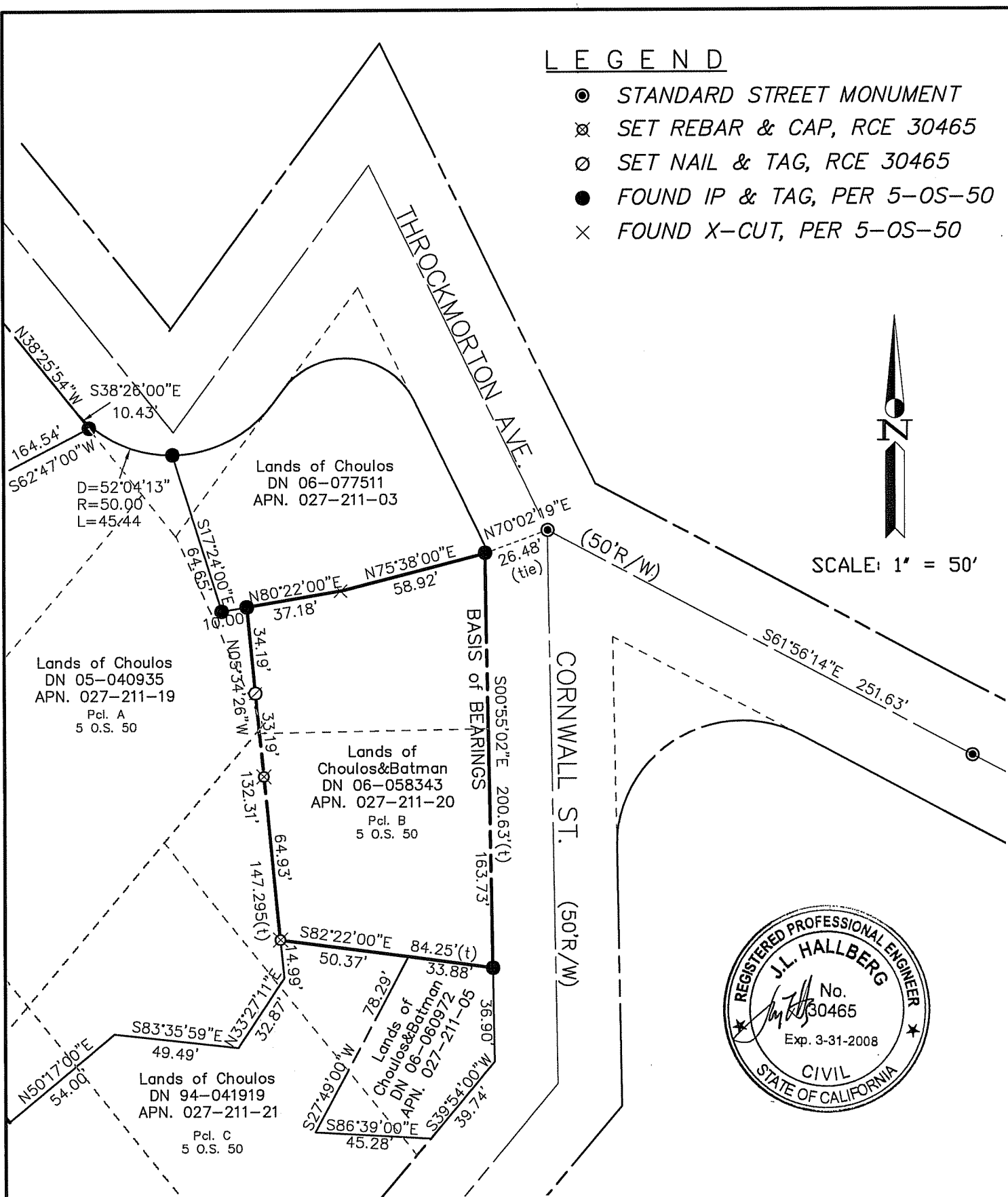
This Corner Record was received AUGUST 28, 2007  
and examined and filed OCTOBER 2, 2007  
Signed \_\_\_\_\_ P.L.S. or R.C.E. No. 7128  
Title COUNTY SURVEYOR



**County Surveyor's Comment** \_\_\_\_\_

**LEGEND**

- STANDARD STREET MONUMENT
- ⊗ SET REBAR & CAP, RCE 30465
- SET NAIL & TAG, RCE 30465
- FOUND IP & TAG, PER 5-OS-50
- × FOUND X-CUT, PER 5-OS-50



SCALE: 1" = 50'



Note: All distances are in feet and decimals thereof.

SHEET	1	OF	1
SCALE:	1" = 50'	DESIGN:	P.R.
DATE:	Aug. 2007	DRAWN:	P.R.
FILE:	2006-123	CHECKED:	J.H.
2006-123\DWG\SP.DWG,COR-REC			

**J.L. ENGINEERING**  
 CIVIL ENGINEERS-LAND SURVEYORS  
 1539 4th ST., SAN RAFAEL, CA. 94901 (415) 457-6647

**Corner Record**

Lands of Choulos & Batman - 1 Cornwall St.  
 APN 027-211-20, Mill Valley, Marin County, CA