

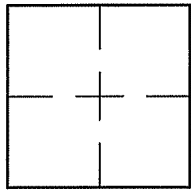
CORNER RECORD

Document Number A.P. 27-211-19

City of MILL VALLEY

County of MARIN, California

Brief Legal Description PARCEL A PER 5 O.S. 50



CORNER TYPE **COORDINATES (Optional)**

Government Corner Control
Meander Property
Rancho Other
Date of Survey 1/03/2012

N. _____
E. _____
Zone _____ NAD27 NAD83
NAD83 Epoch _____
Elev. _____
Vert. Datum: NGVD29 NAVD88
Meas. Units: Metric Imperial

Corner- Left as found Found and tagged Established Reestablished Rebuilt

Identification and type of corner found: Evidence used to identify or procedure used to establish or reestablish the corner:
REESTABLISHED PARCEL A AS SHOWN ON 5 O.S. 50 USING FOUND STREET MONUMENTS ON
THROCKMORTON AVENUE ALSO AS SHOWN ON 5 O.S. 50 AND SHEET 2.

A description of the physical condition of the monument as found and as set or reset: SEE SHEET 2.

SURVEYOR'S STATEMENT

This Corner Record was prepared by me or under my direction in conformance with

the Land Surveyor's Act on JANUARY 27, 2012

Signed Lawrence P. Doyle P.L.S. or R.C.E. No. P.L.S. 4694



COUNTY SURVEYOR'S STATEMENT

This Corner Record was received JANUARY 30, 2012

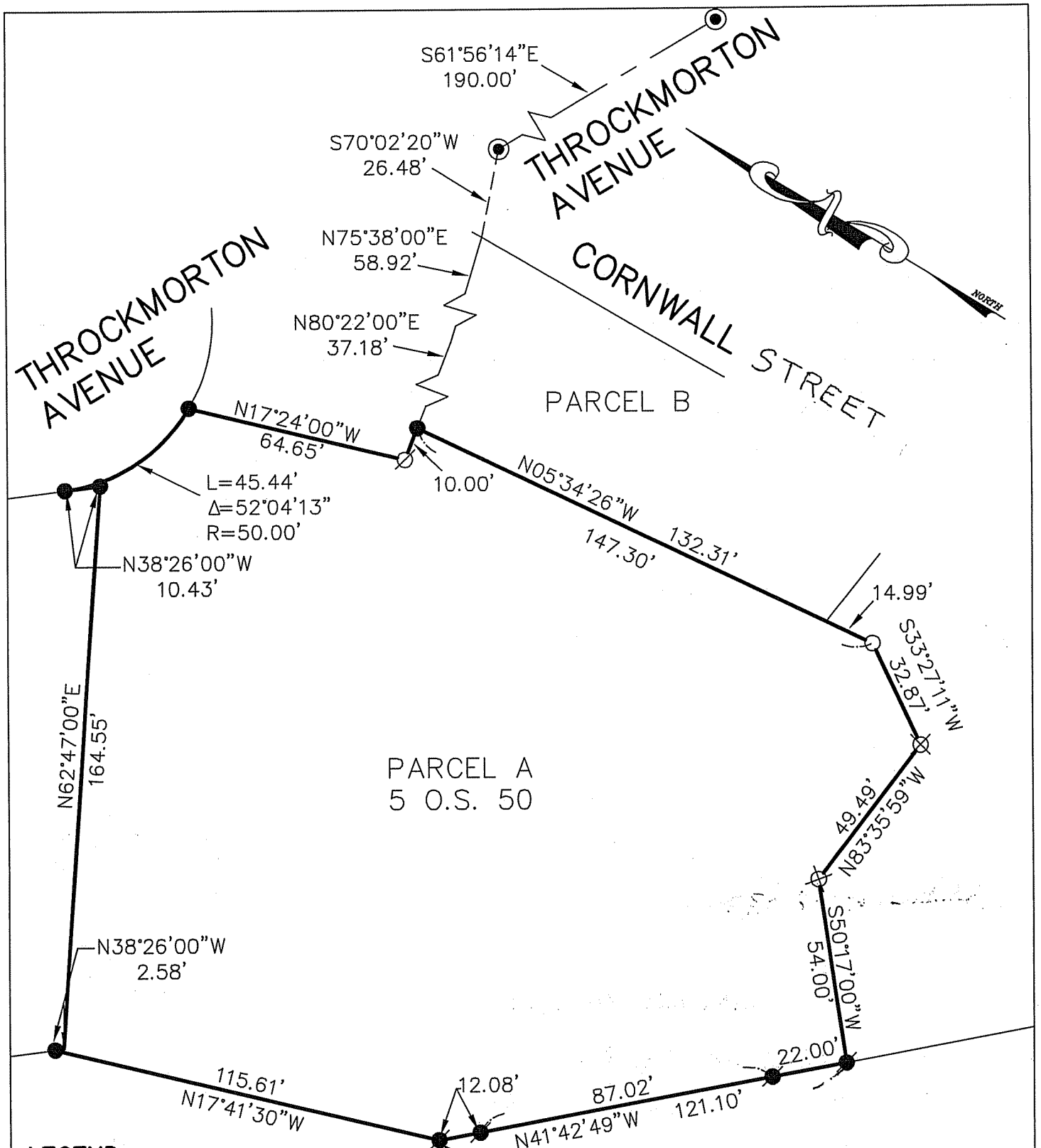
and examined and filed FEBRUARY 29, 2012

Signed [Signature] P.L.S. or R.C.E. No. 7128

Title COUNTY SURVEYOR

County Surveyor's Comment _____





LEGEND

- FOUND STREET MONUMENT
- FOUND PIPE
- FOUND IRON PER 5 O.S. 50
- FOUND IRON PIN IN CONCRETE PER 5 O.S. 50
- SET 3/4" PIPE & PLUG, L.S. 4694
- ⊗ SET TACK & TAG, L.S. 4694 ON FENCE
- ⊗ SET NAIL IN LAWN

CORNER RECORD PARCEL A, 5 O.S. 50 MILL VALLEY MARIN COUNTY CALIFORNIA		
SCALE: 1" = 40'	LAWRENCE P. DOYLE LAND SURVEYOR/CIVIL ENGINEER 100 HELENS LANE MILL VALLEY CA 94941 (415-388-9585)	DRAWN BY:
DATE: 01/03/12		SHEET 2 OF 2
		DRAWING NO. 2190-11