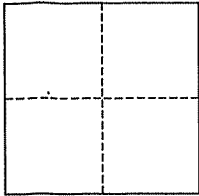


CORNER RECORD

Document Number B27-172-14
County of Marin, California

City of Mill Valley

Brief Legal Description Portion of Lot 281, Rack 1 Pull 2; 7 OS 98; DN 2004-033292



CORNER TYPE

Government Corner Control
Meander Property
Rancho Other
Date of Survey July 28, 2006

COORDINATES (Optional)

N. _____
E. _____
Zone _____ NAD27 NAD83
NAD83 Epoch _____
Elev. _____
Vert. Datum: NGVD29 NAVD88
Meas. Units: Metric Imperial

Corner- Left as found Found and tagged Established Reestablished Rebuilt

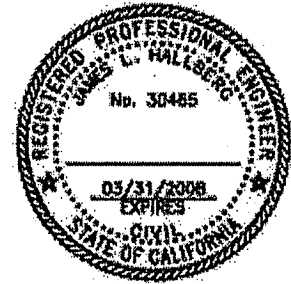
Identification and type of corner found: Evidence used to identify or procedure used to establish or reestablish the corner:
Basis of Bearing was between the found Street Monument and found Rebar, per 7 OS 98.

A description of the physical condition of the monument as found and as set or reset: Set Iron Pipes & Plugs (RCE 30465) and Nail & Tag as shown, per 7 OS 98.

SURVEYOR'S STATEMENT

This corner Record was prepared by me or under my direction in conformance with the Land Surveyor's Act on October 27, 2006

Signed [Signature] P.L.S. or R.C.E. No. 30465

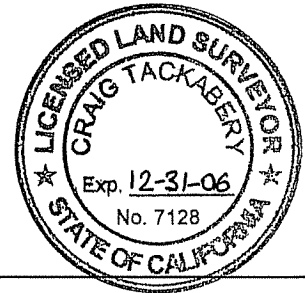


COUNTY SURVEYOR'S STATEMENT

This Corner Record was received OCTOBER 28, 2006 and examined and filed OCTOBER 31, 2006

Signed [Signature] P.L.S. or R.C.E. No. 7128

Title COUNTY SURVEYOR

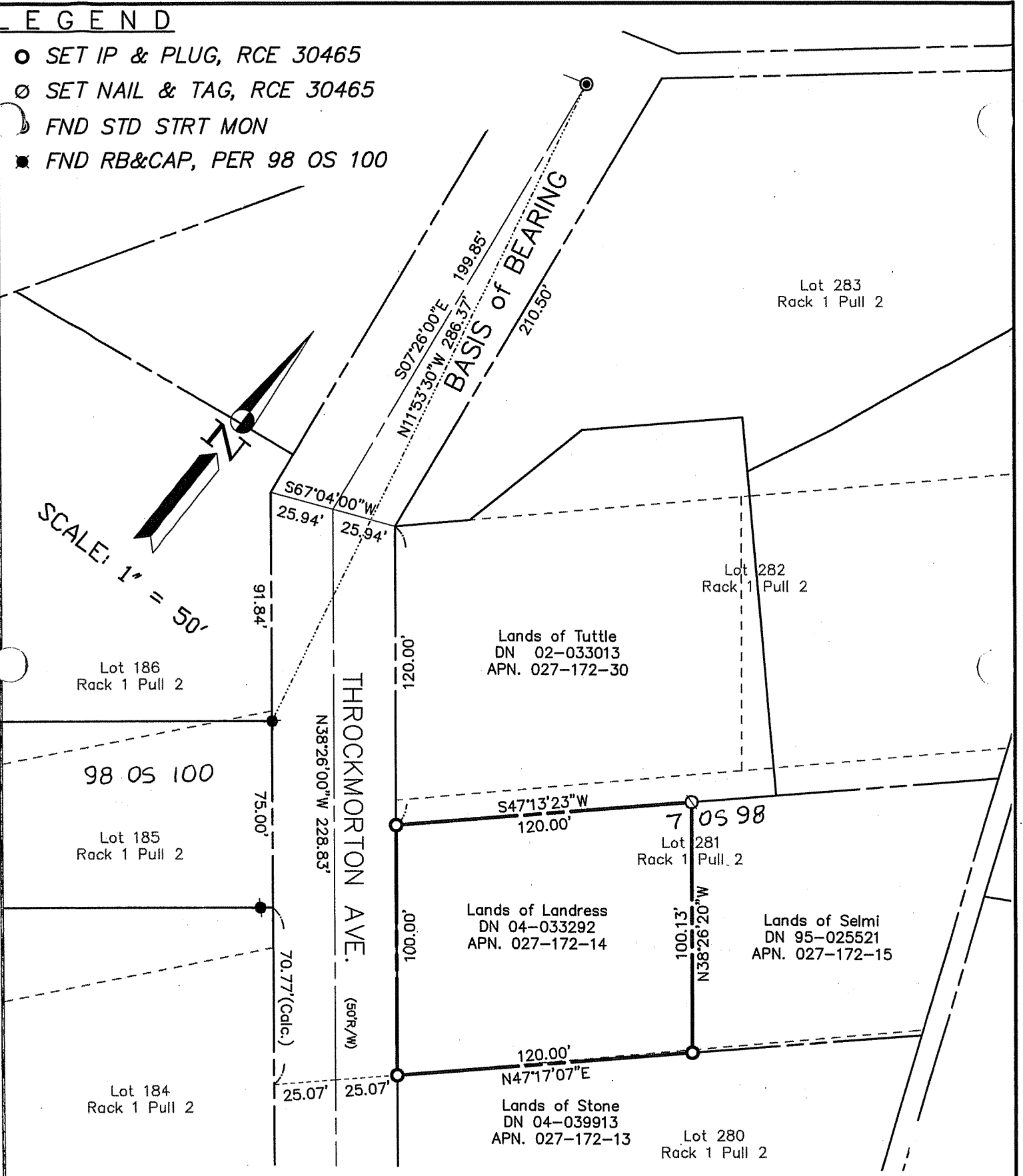
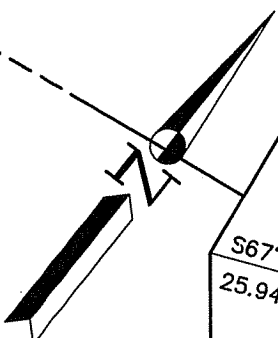


County Surveyor's Comment _____

LEGEND

- SET IP & PLUG, RCE 30465
- ∅ SET NAIL & TAG, RCE 30465
- ⊂ FND STD STRT MON
- FND RB&CAP, PER 98 OS 100

SCALE: 1" = 50'



Note: All distances are in feet and decimals thereof.

SHEET	1	OF	1
SCALE:	1" = 50'	DESIGN:	P.R.
DATE:	Aug. 2006	DRAWN:	P.R.
FILE:	2005-034	CHECKED:	J.L.H
2005-034\DWG\TOPO-CORREC.DWG,COR-REC			

J.L. ENGINEERING
CIVIL ENGINEERS-LAND SURVEYORS
 1539 4th ST., SAN RAFAEL, CA. 94901 (415) 457-6647

Corner Record
 Lands of Landress - 508 Throckmorton Ave.
 APN 027-172-14, Mill Valley, Marin County, CA