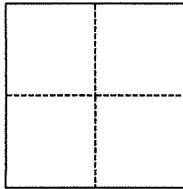


CORNER RECORD

Agency Index DAW#19-096
 Document Number APN 027-144-16

City of MILL VALLEY County of MARIN, California
 Brief Legal Description PORTION RE-SUB B OF SUB. 3 & RE-SUB. A OF SUB 2 1 RM 101 MCR

CORNER TYPE



- Government Corner Control
 Meander Property
 Rancho Other

Date of Survey July 23, 2019

COORDINATES (Optional)

N. _____ E. _____
 Elevation _____
 Units Metric U.S. Survey Foot
 Horizontal Datum _____
 Zone _____ Epoch Date _____
 Vertical Datum _____
 Complies with Public Resources Code §§8801-8819
 Complies with Public Resources Code §§8890-8902

PLS Act Ref.: 8765(d) 8771 8773 Other:
 Corner/Monument: Left as found Established Rebuilt Pre-Construction
 Found and tagged Reestablished Referenced Post-Construction

Narrative of corner identified and monument as found, set, reset, replaced, or removed:

See sheet #2 for description(s):

Set 5/8" rebars and caps PLS 7053 on line between found monuments per 33 OS 28 as shown on sheet 2.

SURVEYOR'S STATEMENT

This Corner Record was prepared by me or under my direction in conformance with
 the Professional Land Surveyors' Act on August 19, 2019
 Signed Linda A. Carruthers P.L.S. or R.C.E. No. 7053

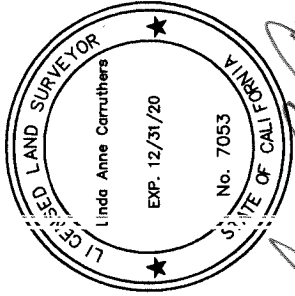
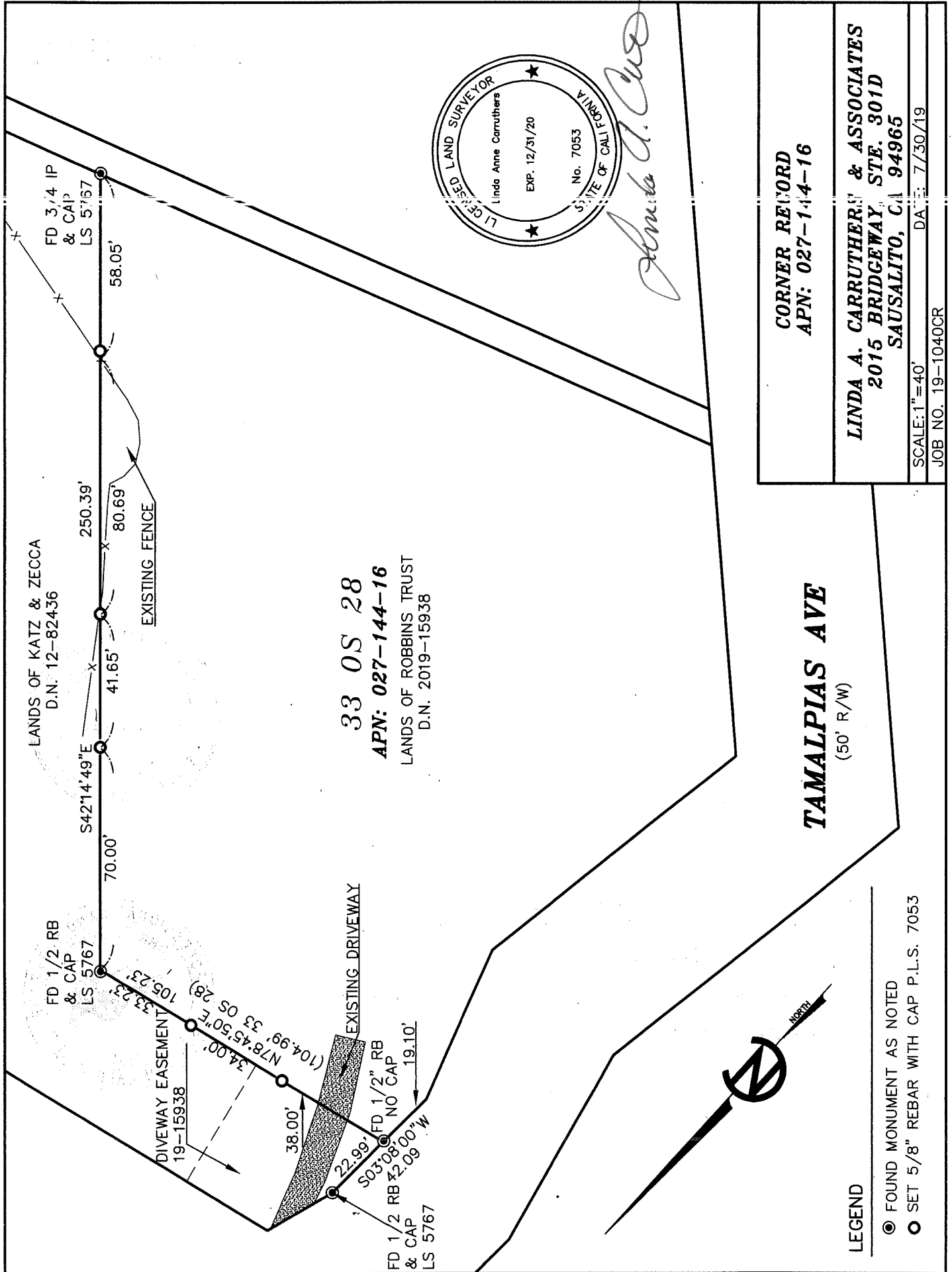


COUNTY SURVEYOR'S STATEMENT

This Corner Record was received AUGUST 20, 2019
 and examined and filed SEP. 26, 2019
 Signed J. J. [Signature] P.L.S. or R.C.E. No. 9292
 Title DEPUTY C.S.

County Surveyor's Comment





Linda A. Carruthers

| |
|---|
| CORNER RECORD APN: 027-144-16 |
| LINDA A. CARRUTHERS & ASSOCIATES 2015 BRIDGEWAY, STE. 301D SAUSALITO, CA 94965 |
| SCALE: 1"=40' |
| DATE: 7/30/19 |
| JOB NO. 19-1040CR |

- LEGEND**
- FOUND MONUMENT AS NOTED
 - SET 5/8" REBAR WITH CAP P.L.S. 7053