

# CORNER RECORD

Document Number A.P.# 027-142-08

City of MILL VALLEY

County of MARIN, California

rief Legal Description PARCEL 2 13 P.M. 72

### CORNER TYPE

Government Corner  Control   
 Meander  Property   
 Rancho  Other   
 Date of Survey 5/3/03

### COORDINATES (Optional)

N. \_\_\_\_\_  
 E. \_\_\_\_\_  
 Zone \_\_\_\_\_ NAD27  NAD83   
 NAD83 Epoch \_\_\_\_\_  
 Elev. \_\_\_\_\_  
 Vert. Datum: NGVD29  NAVD88   
 Meas. Units: Metric  Imperial

Corner: Left as found  Found and tagged  Established  Reestablished  Rebuilt

Identification and type of corner found: Evidence used to identify or procedure used to establish or reestablish the corner:  
REESTABLISHED PROPERTY LINE BASED ON STANDARD STREET MONUMENTS 13 P.M. 72

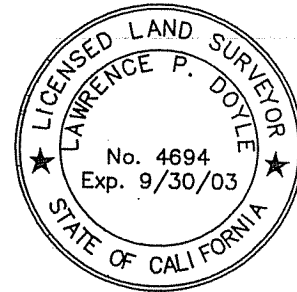
A description of the physical condition of the monument as found and as set or reset: SEE SHEET 2.

### SURVEYOR'S STATEMENT

This Corner Record was prepared by me or under my direction in conformance with

the Land Surveyor's Act on MAY 3 2003

Signed Lawrence P. Doyle P.L.S. or R.C.E. No. P.L.S. 4694



### COUNTY SURVEYOR'S STATEMENT

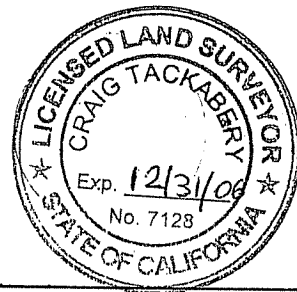
This Corner Record was received AUGUST 5, 2003

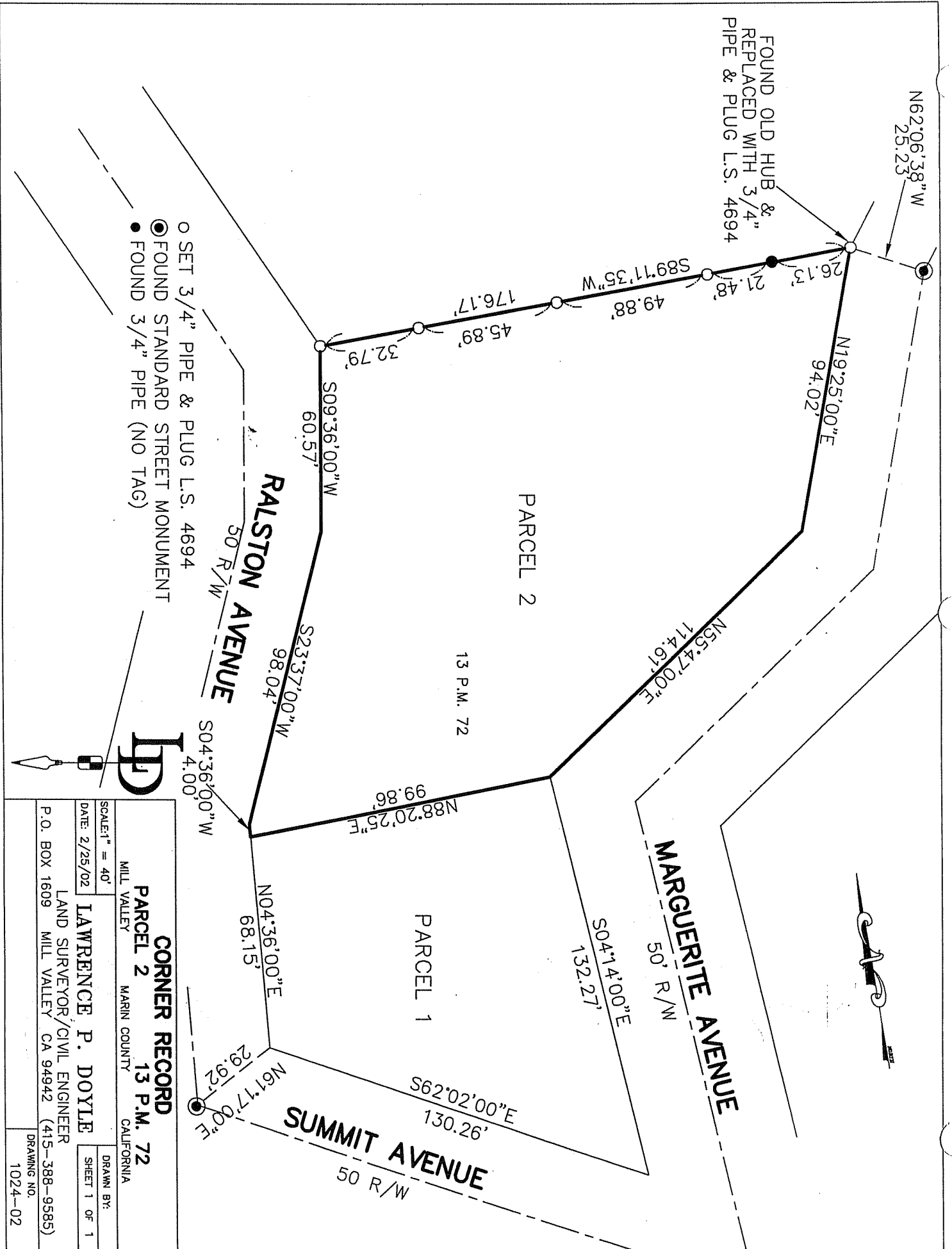
and examined and filed AUGUST 18, 2003

Signed Cery P.L.S. or R.C.E. No. 7128

Title COUNTY SURVEYOR

County Surveyor's Comment \_\_\_\_\_





FOUND OLD HUB & REPLACED WITH 3/4\" PIPE & PLUG L.S. 4694

- SET 3/4\" PIPE & PLUG L.S. 4694
- FOUND STANDARD STREET MONUMENT
- FOUND 3/4\" PIPE (NO TAG)



|   |              |
|---|--------------|
| <b>CORNER RECORD</b>                              |              |
| 13 P.M. 72  |              |
| MILL VALLEY                                       | MARIN COUNTY |
| CALIFORNIA  |              |
| SCALE: 1" = 40'                                   | DRAWN BY:    |
| DATE: 2/25/02                                     | SHEET 1 OF 1 |
| LAWRENCE P. DOYLE                                 |              |
| LAND SURVEYOR/CIVIL ENGINEER                      |              |
| P.O. BOX 1609 MILL VALLEY CA 94942 (415-388-9585) |              |
| DRAWING NO. 1024-02                               |              |