

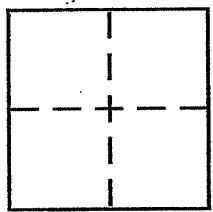
CORNER RECORD

Document Number 027.131.06

City of MILL VALLEY

County of Marin, California

Brief Legal Description Lands of Bicknell & Massa (formerly Millsap) Per 2005 Maps 186



CORNER TYPE

Government Corner Control
Meander Property
Rancho Other
Date of Survey Aug. 17 & 18, 2010

COORDINATES (Optional)

N. _____
E. _____
Zone _____ NAD27 NAD83
NAD83 Epoch _____
Elev. _____
Vert. Datum: NGVD29 NAVD88
Meas. Units: Metric Imperial

Corner - Left as found Found and tagged Established Reestablished Rebuilt

Identification and type of corner found: Evidence used to identify or procedure used to establish or reestablish the corner:
Reestablish the boundaries of the lands of Millsap (now Bicknell & Massa) as identified on 2005 Maps 186 done by this office. Boundary retraced from found points of said map. Misc. line points set at random intervals along lot lines & reestablish lot corners. see reverse side for locations.

A description of the physical condition of the monument as found and as set or reset: set either a 1/2" rebar with plastic yellow cap stamped "Scranton, PLS 5379" attached to top of rebar (top of rebar driven flush to surrounding grade) or set brass nail with Brass tag stamped PLS 5379. see reverse side for specific locations.

SURVEYOR'S STATEMENT

This Corner Record was prepared by me or under my direction in conformance with the Land Surveyor's Act on August 25th 2010
Signed Douglas J. Scranton P.L.S or R.C.E. No. PLS 5379



COUNTY SURVEYOR'S STATEMENT

This Corner Record was received AUGUST 30, 2010
and examined and filed SEPTEMBER 21, 2010
Signed [Signature] P.L.S or R.C.E. No. 7128
Title COUNTY SURVEYOR



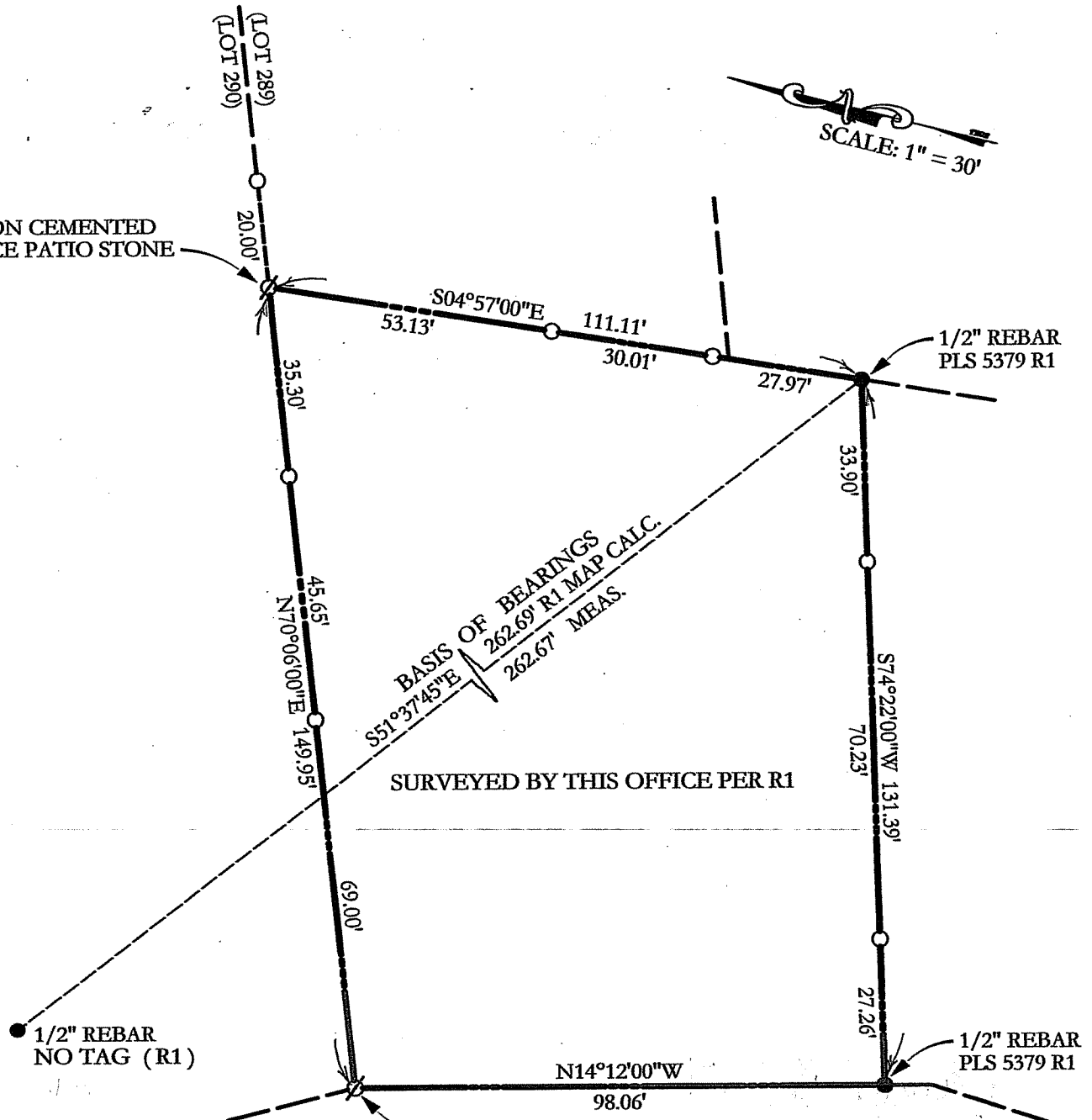
County Surveyor's Comment _____

Prepared BY: DJ SCRANTON SURVEYING PETALUMA CA

(LOT 289)
(LOT 290)

SCALE: 1" = 30'

NOTE:
FALLS ON CEMENTED
IN PLACE PATIO STONE



BASIS OF BEARINGS
262.69' R1 MAP CALC.
262.67' MEAS.
S51°37'45"E

SURVEYED BY THIS OFFICE PER R1

1/2" REBAR
NO TAG (R1)

1/2" REBAR
PLS 5379 R1

1/2" REBAR
PLS 5379 R1

NOTE:
FALLS ON CONCRETE DRIVEWAY.
PREVIOUS CORNER OF R1 ON
STONE WALL DESTROYED BY
DRIVEWAY IMPROVEMENTS.

LOVELL AVENUE (50)

LEGEND

- SET 1/2" REBAR/PLS CAP 5379
- ∅ SET BRASS NAIL WITH BRASS TAG LS 5379
- FOUND MONUMENTATION AS NOTED PER R1

REFERENCE

R1 2005 MAPS 186
DONE BY THIS OFFICE

BASIS OF BEARINGS

TAKEN AS SOUTH 51°37'45" EAST BETWEEN MONUMENTS AS SHOWN HEREON AND AS SAID MONUMENTS ARE SHOWN UPON R1

ALL DIMENSIONS GIVEN IN FEET AND DECIMALS THEREOF

NO EASEMENTS ARE SHOWN