

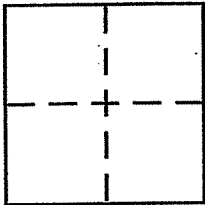
**CORNER RECORD**

Document Number 027-111-22

City of MILL VALLEY

County of MARIN, California

Brief Legal Description LANDS OF MCGAHAN SHOWN ON 2008 MAPS 74



**CORNER TYPE**

Government Corner  Control   
Meander  Property   
Rancho  Other   
Date of Survey NOV. 17, 2010

**COORDINATES (Optional)**

N. \_\_\_\_\_  
E. \_\_\_\_\_  
Zone  NAD27  NAD83   
NAD83 Epoch \_\_\_\_\_  
Elev. \_\_\_\_\_  
Vert. Datum: NGVD29  NAVD88   
Meas. Units: Metric  Imperial

Corner -- Left as found  Found and tagged  Established  Reestablished  Rebuilt

Identification and type of corner found: Evidence used to identify or procedure used to establish or reestablish the corner:  
REESTABLISH A PORTION OF THE LANDS OF MCGAHAN  
SHOWN UPON 2008 MAPS & THAT IS COMMON  
WITH THE RIGHT OF WAY OF TAMALPAIS AVENUE.  
LINES REESTABLISHED FROM FOUND MONUMENTATION  
PER SAID MAP. SEE REVERSE SIDE FOR DETAILS

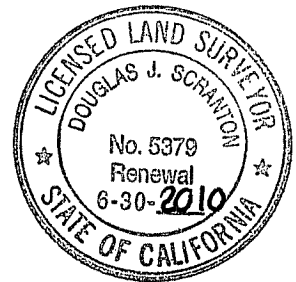
A description of the physical condition of the monument as found and as set or reset: SET EITHER:  
A 1/2" PEBBLE WITH CAP PLS 5379, SCRANTON (DRIVEN  
FLUSH TO SURROUNDING GRADE OR SET BRASS NAIL  
WITH BRASS TAG LS 5379 IN PAVEMENT. SEE SKETCH  
ON REVERSE SIDE FOR DETAILS.

**SURVEYOR'S STATEMENT**

This Corner Record was prepared by me or under my direction in conformance with

the Land Surveyors Act on NOVEMBER 19, 2010

Signed Douglas J. Scranton P.L.S or R.C.E. No. PS 5379



**COUNTY SURVEYOR'S STATEMENT**

This Corner Record was received DECEMBER 2, 2010

and examined and filed JANUARY 6, 2011

Signed [Signature] P.L.S or R.C.E. No. 7128

Title COUNTY SURVEYOR

County Surveyor's Comment \_\_\_\_\_



PREPARED BY DO SCRANTON SURVEYING PETALUMA, CA

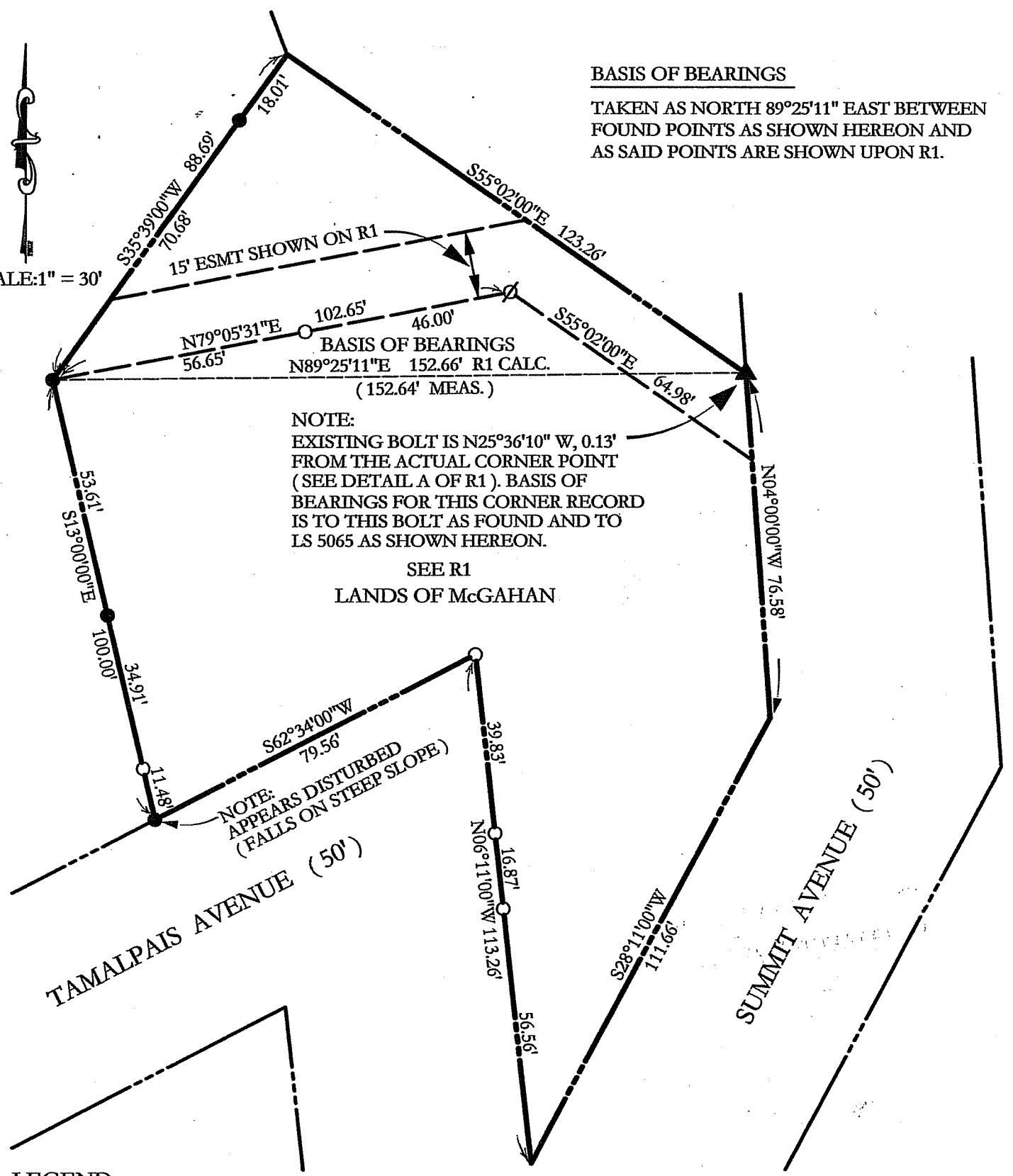
JIN 11032



SCALE: 1" = 30'

BASIS OF BEARINGS

TAKEN AS NORTH 89°25'11" EAST BETWEEN FOUND POINTS AS SHOWN HEREON AND AS SAID POINTS ARE SHOWN UPON R1.



NOTE:  
EXISTING BOLT IS N25°36'10" W, 0.13'  
FROM THE ACTUAL CORNER POINT  
(SEE DETAIL A OF R1). BASIS OF  
BEARINGS FOR THIS CORNER RECORD  
IS TO THIS BOLT AS FOUND AND TO  
LS 5065 AS SHOWN HEREON.

SEE R1  
LANDS OF MCGAHAN

NOTE:  
APPEARS DISTURBED  
(FALLS ON STEEP SLOPE)

LEGEND

- SET 1/2" REBAR/PLS CAP 5379
- ∅ SET BRASS NAIL WITH BRASS TAG LS 5379
- ▲ FOUND BOLT AS NOTED PER R1
- FOUND 1/2" REBAR & CAP LS 5065 AS NOTED PER R1

REFERENCE

R1 2008 MAPS 74

ALL DIMENSIONS GIVEN IN FEET AND DECIMALS THEREOF