

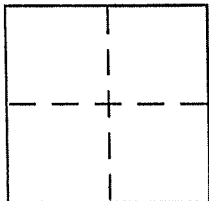
CORNER RECORD

Document Number APN 027-104-15

City of MILL VALLEY

County of MARIN, California

Brief Legal Description APN 027-104-15



CORNER TYPE

Government Corner Control
Meander Property
Rancho Other
Date of Survey 3/11/02

COORDINATES (Optional)

N. _____
E. _____
Zone _____ NAD27 NAD83
NAD83 Epoch _____
Elev. _____
Vert. Datum: NGVD29 NAVD88
Meas. Units: Metric Imperial

Corner - Left as found Found and tagged Established Reestablished Rebuilt

Identification and type of corner found: Evidence used to identify or procedure used to establish or reestablish the corner:

FND 3/4" I.P.'S AND 5/8" REBAR AS SHOWN ON 21 OS 68
AND ON REVERSE.

A description of the physical condition of the monument as found and as set or reset: SET 3/4" I.P. TAGGED
PLS 5296 AND 2"x2" HUB & TAG AS SHOWN ON REVERSE.

APN 027-104-15

SURVEYOR'S STATEMENT

This Corner Record was prepared by me or under my direction in conformance with the Land Surveyor's Act on MARCH 21, 2002

Signed [Signature] P.L.S or R.C.E. No. PLS 5296

COUNTY SURVEYOR'S STATEMENT

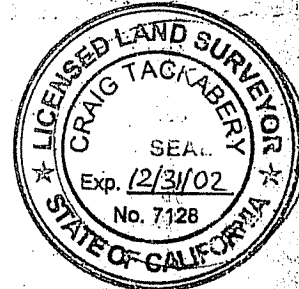
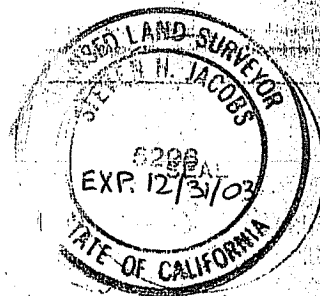
This Corner Record was received APRIL 5, 2002

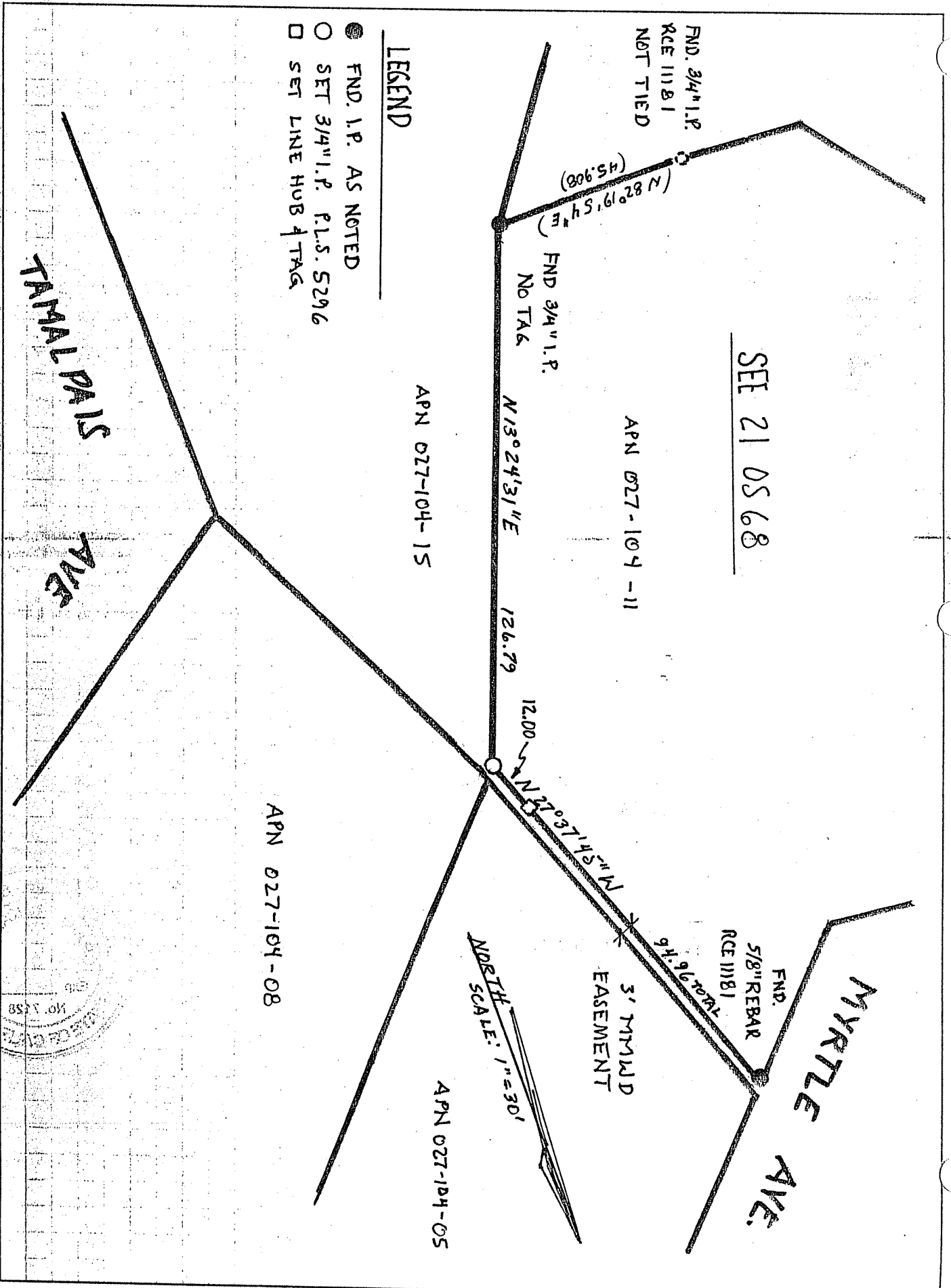
and examined and filed APRIL 9, 2002

Signed [Signature] P.L.S or R.C.E. No. 7128

Title DEPUTY

County Surveyor's Comment _____





LEGEND

- FND. I.P. AS NOTED
- SET 3/4" I.P. P.L.S. 5296
- SET LINE HUB & TAG

SEE 21 05 68

