

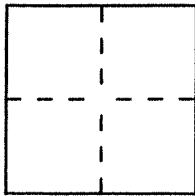
# CORNER RECORD

Document Number A.P. # 27-052-23, 17, 24

City of MILL VALLEY

County of MARIN, California

Brief Legal Description APN 27-052-23 & 17/24 - PARCELS OF 15 P.M. 8 7



### CORNER TYPE

### COORDINATES (Optional)

Government Corner  Control   
 Meander  Property   
 Rancho  Other   
 Date of Survey \_\_\_\_\_

N. \_\_\_\_\_  
 E. \_\_\_\_\_  
 Zone \_\_\_\_\_ Datum \_\_\_\_\_  
 Elev. \_\_\_\_\_

Corner — Left as found  Found and tagged  Established  Reestablished  Rebuilt

Identification and type of corner found: Evidence used to identify or procedure used to establish or reestablish the corner:

See Sketch

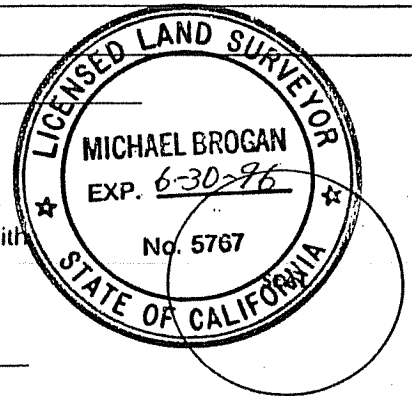
A description of the physical condition of the monument as found and as set or reset:

See Sketch

### SURVEYOR'S STATEMENT

This Corner Record was prepared by me or under my direction in conformance with the Land Surveyors' Act on June 25 1996.

Signed Michael A. Brogan L.S. or R.C.E. Number 5767



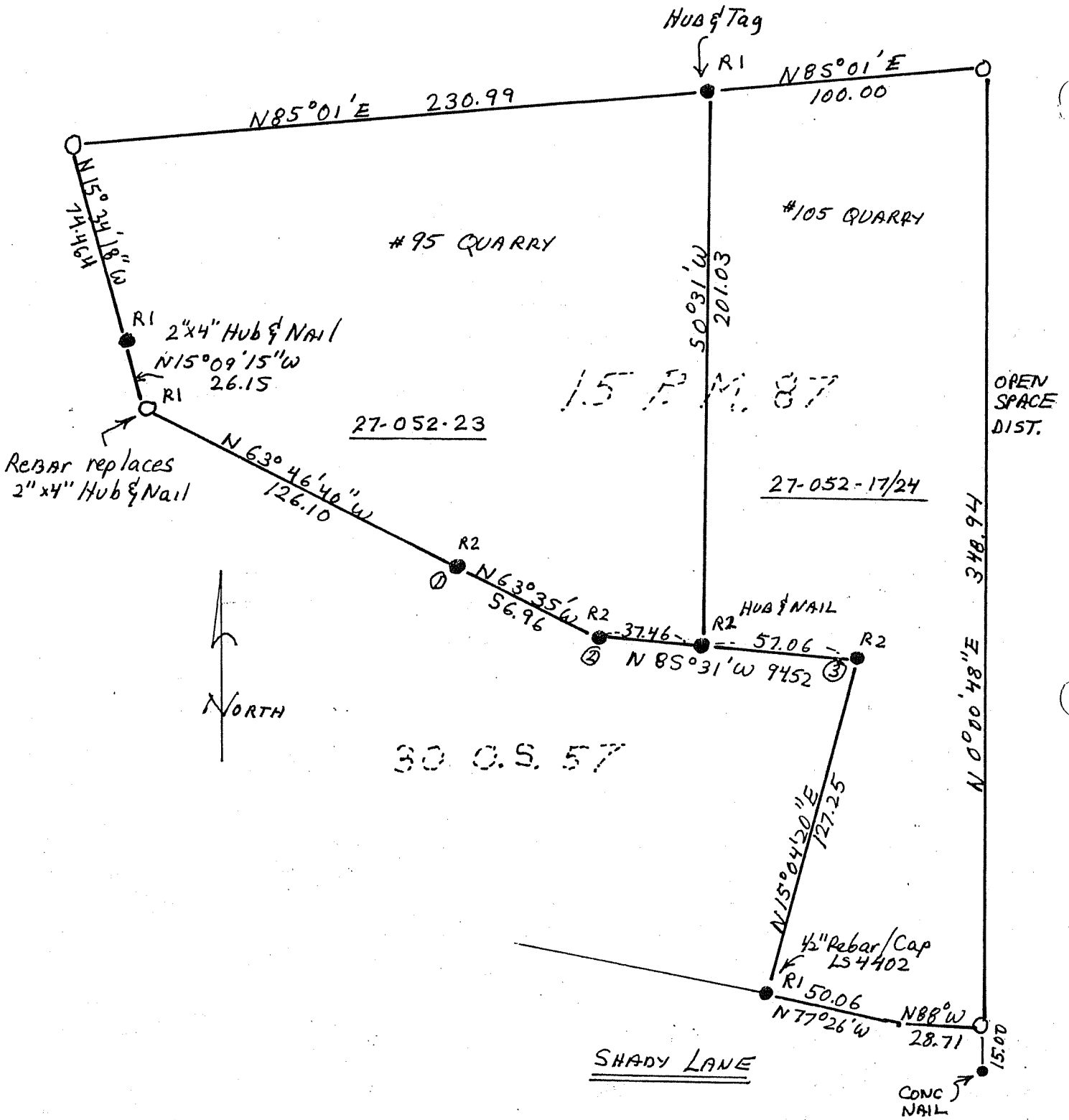
### COUNTY SURVEYOR'S STATEMENT

This Corner Record was received JULY 1 1996 and examined and filed 7-2 1996.

Signed [Signature] Title DES



County Surveyor's Comment \_\_\_\_\_



①②③ = 3/4" IP LS 3887 - Pipes ReseZ in Concrete @ New Fence Posts - Dimensions From 15 P.M. 87 FALL within posts.

○ = Set 1/2" ReBAR w/CAP LS 5767

● = FOUND Monumentation  
As Per 15 P.M. 87 or 30 O.S. 57  
(R1) (R2)