

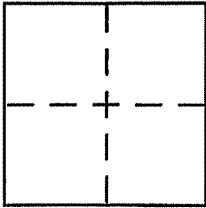
CORNER RECORD

Document Number 027-052-20

City of MILL VALLEY

County of MARIN, California

Brief Legal Description PARCEL B, 18 O.S. 39



CORNER TYPE

Government Corner Control
Meander Property
Rancho Other
Date of Survey _____

COORDINATES (Optional)

N. _____
E. _____
Zone _____ NAD27 NAD83
NAD83 Epoch _____
Elev. _____
Vert. Datum: NGVD29 NAVD88
Meas. Units: Metric Imperial

Corner - Left as found Found and tagged Established Reestablished Rebuilt

Identification and type of corner found: Evidence used to identify or procedure used to establish or reestablish the corner:

See Page 2

A description of the physical condition of the monument as found and as set or reset:

See Page 2

SURVEYOR'S STATEMENT

This Corner Record was prepared by me or under my direction in conformance with the Land Surveyor's Act on 5/28/04

Signed [Signature] P.L.S or R.C.E. No. 6784

COUNTY SURVEYOR'S STATEMENT

This Corner Record was received JUNE 1, 2004

and examined and filed JUNE 22, 2004

Signed [Signature] P.L.S or R.C.E. No. 7128

Title COUNTY SURVEYOR

County Surveyor's Comment _____



APN: 027-052-04

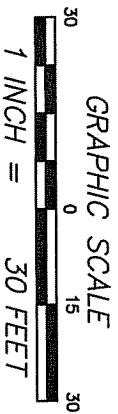
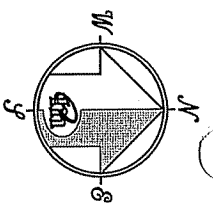
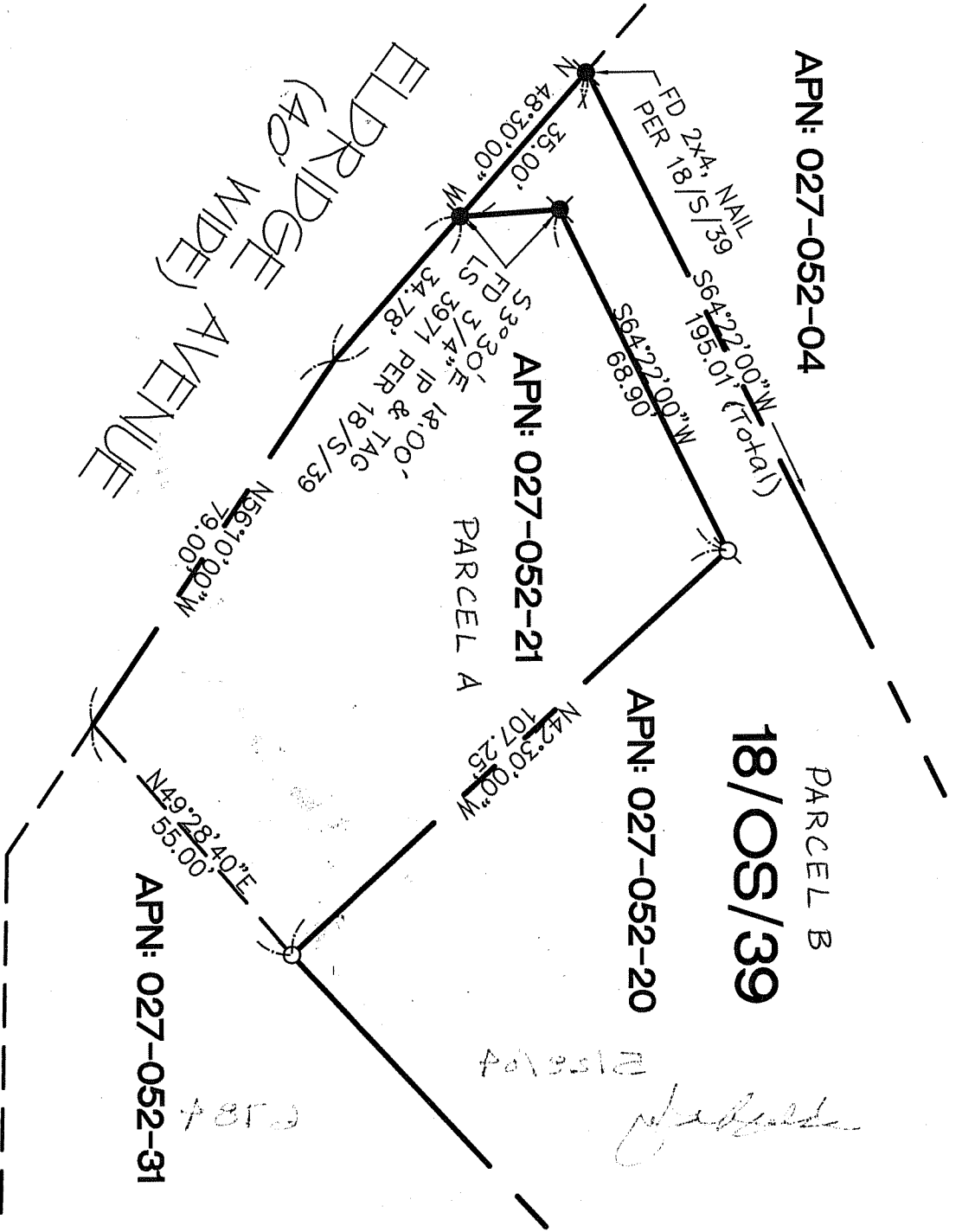
PARCEL B

18/OS/39

APN: 027-052-20

APN: 027-052-21

APN: 027-052-31



REFERENCE

RECORD OF SURVEY, FILED FOR RECORD 19 APRIL 1983 IN BOOK 18 OF SURVEYS, AT PAGE 39, MARIN COUNTY RECORDS.

LEGEND

- ✖ FOUND AS NOTED
 - ⊘ SET 5/8" REBAR WITH CAP, PLS 6784
- NOTE
RECORD=MEASURED

CORNER RECORD

MERIDIAN SURVEYING ENGINEERING, INC.

1812 UNION STREET
SAN FRANCISCO, CA 94123
(415) 440-4131

777 GRAND AVENUE, SUITE 202
SAN RAFAEL, CA 94901
(415) 466-6450

04043

info@meridiansurvey.com