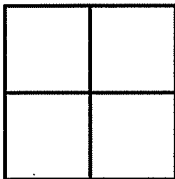


CORNER RECORD

Document Number APN 027-042-48

City of MILL VALLEY County of Marin California.

Brief Legal Description: LANDS OF DAVID & KATHY MARTIN AS PER D. N. 96-041797 & D.N. 00-53894



CORNER TYPE:

Government Corner Control
 Meander Property
 Rancho Other
 Date of Survey _____

COORDINATES [Optional]

N> _____
 E> _____
 Zone _____ Datum _____
 Elev> _____

CORNER:----- Left as found Found & Tagged Established Reestablished Rebuilt

Identification & Type of Corner Found: Evidence used to identify or procedure used to establish or reestablish the corner:

FND. EXISTING MONS. PER RECORD MAP 2005-OS-66 & 27-OS-60

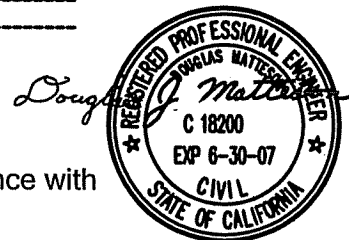
A description of the physical condition of the monument as found and as set or reset:

RCE# 18200, AT LOCATIONS SHOWN ON REVERSE. SET 5/8" REBAR & CAP,

SURVEYOR'S STATEMENT

The corner record was prepared by me or under my direction in conformance with the Land Surveyors' Act on APRIL 15 2006

Signed: _____ PLS or RCE # 18200

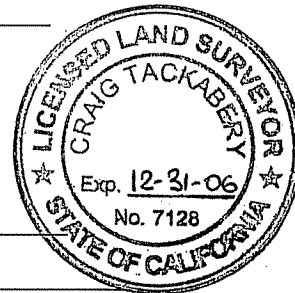


COUNTY SURVEYORS STATEMENT

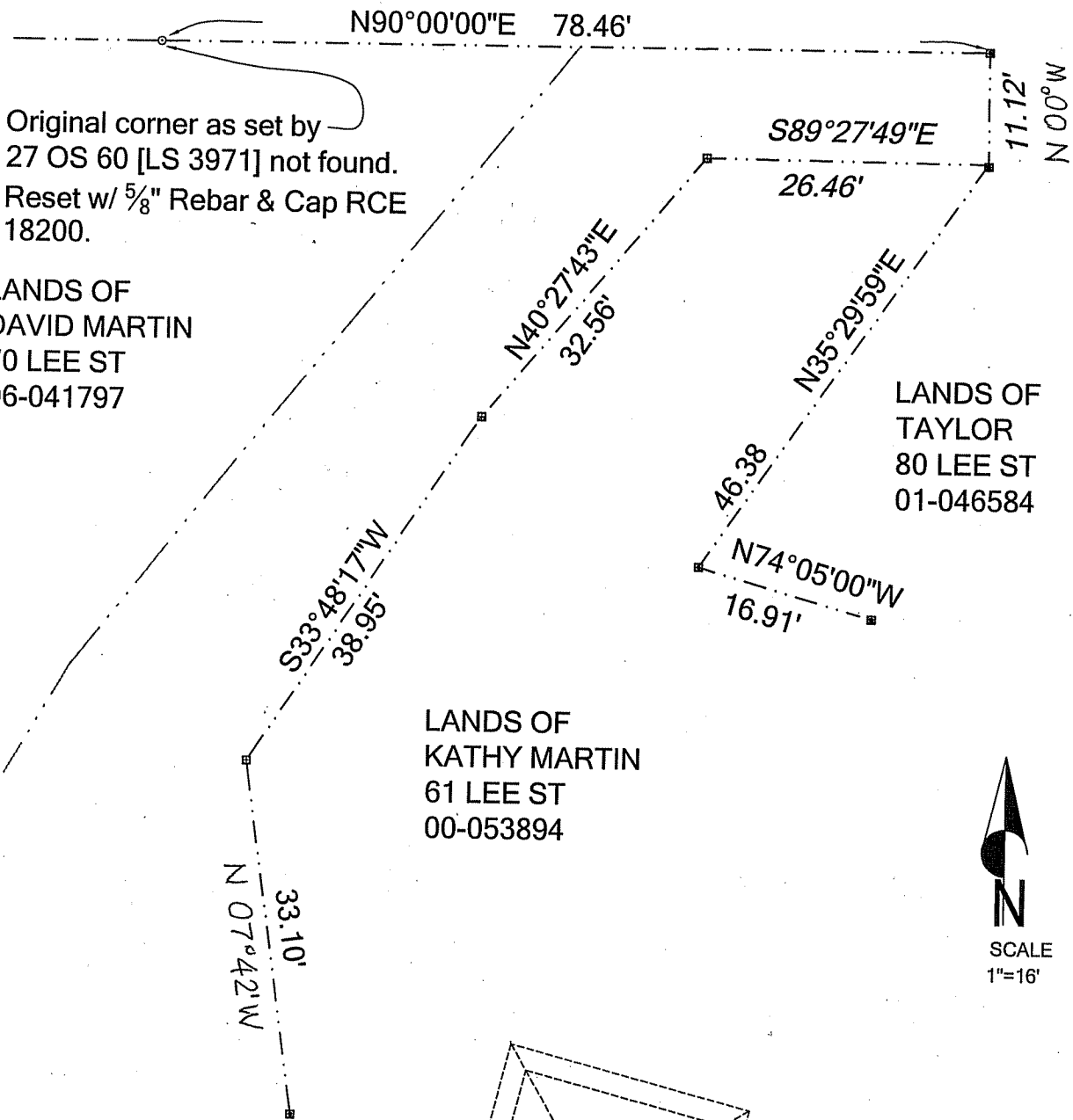
This corner record was received: MAY 10, 2006

and examined and filed MAY 31, 2006

Signed [Signature] Title: COUNTY SURVEYOR



COUNTY SURVEYOR'S COMMENT _____



LEGEND

- SET REBAR AND CAP RCE 18200
- FOUND 5/8" REBAR & CAP RCE 18200 PER 2005-OS 66
- SURVEY BOUNDARY
- EASEMENT