





Legend: Drawings, changes and the final construction items and product details on the manufacturer's product sheets. For compliance with the fire code, listings and specifications shall be reviewed for the purpose of which they were used. The manufacturer of the product and shall not be used, or used as a part of any project for which they were not intended, without the express consent of Home E.C., Inc. Reproduction or modification by any person, or in any part, is prohibited. This is a fire safety, change and specifications sheet created with Home E.C., Inc. without products. Visit connect-homes.com for more information and complete fire safety information of the products of these products.

MODEL HOME  
CONNECT 6L+CG

SHEET SET  
LOCAL

SHEET TITLE  
LOCAL SET - FINISH  
+ MATERIAL  
SCHEDULE

SHEET, SHEET / MODEL  
SET NUMBER / HOME

L-0.2

NOTE FOR ALL PRODUCTS: FOLLOW AND COMPLY WITH ALL MANUFACTURER SPECIFICATIONS AND GUIDELINES FOR PREPARATION, COMPATIBILITY, DELIVERY AND HANDLING, INSTALLATION, PROTECTION AND WARRANTY REQUIREMENTS

CONCRETE AND MASONRY	
CMU BLOCK (OR CONCRETE AS SUBSTITUTION)	Manufacturer: Orco Product: 8" CMU Block, Stacked Bond Finish/Color: TBD
FOUNDATION VENTS	Manufacturer: VULCAN Product: VFS414FF, 4X14 FOUNDATION VENT Finish/Color: Aluminum
FOUNDATION FOOTINGS, CONCRETE	Manufacturer: TBD

FOUNDATION ACCESS DOOR	
CRAWLSPACE ACCESS DOOR	Manufacturer: St. Paul Corrugating Co. OR Equal. Product: 32X20 Steel Access Door. Size: 32" wide x 20" tall Material: Galvanized Steel, Paintable

**WUI REMARKS**

**METAL SIDING (TYPICAL):**

24 GAUGE, CORRUGATED METAL SIDING IS NON-COMBUSTIBLE MATERIAL. (SEE L-0.2 METAL SIDING ASTM TESTING)

**WOOD SIDING (TYPICAL)**

WUI REMARKS: EXTERIOR WALL PROTECTION AND EXTERIOR PORCH CEILINGS: OFFICE OF THE STATE FIRE MARSHALL - BUILDING MATERIALS LISTING PROGRAM

LISTING NO: 8140-2041.0001

CATEGORY: 8140 - EXTERIOR WALL SIDING AND SHEATHING FOR WILDLAND URBAN INTERFACE (W.U.I.)

LISTEE: AMERICAN WOOD COUNCIL, 222 CATOCTIN CIRCLE, SE, SUITE 201, LEESBURG, VA 20175

DESIGN: SOLID SAWN WOOD SIDING W/NO THROUGH HOLES OR LOOSE KNOTS, INSTALLED OVER STRUCTURAL PLYWOOD, TONGUED AND GROOVED IN A VERTICAL ORIENTATION W/MINIMUM NOMINAL 6" WIDE AND NOMINAL 1" THICK BOARDS, "WESTERN RED CEDAR"

**DECKING (TYPICAL)**

WUI REMARKS: OFFICE OF THE STATE FIRE MARSHAL - BUILDING MATERIALS LISTING PROGRAM

LISTING NO: 8110-2041.0002

CATEGORY: 8110 - DECKING FOR WILDLAND URBAN INTERFACE (WUI)

LISTEE: AMERICAN WOOD COUNCIL, 222 CATOCTIN CIRCLE, SE, SUITE 201, LEESBURG, VA 20175

DESIGN: SOLID "WOOD" DECKING, WHEN INSTALLED OVER MINIMUM 2"x6", SOLID "HAWAIIAN MAHOGANY" OR BETTER JOISTS, SPACED 24" OR LESS ON CENTER, AND DECKING AND JOISTS COMPLYING WITH AMERICAN SOFTWOOD LUMBER STANDARDS PS 20 SD FOLLOWS: MINIMUM NOMINAL 5/4" THICK AND NOMINAL 6" WIDE DECKING BOARDS WITH A MAXIMUM 3/8" RADIUS EDGES MADE OF SOLID WOOD SPECIES "WESTERN RED CEDAR," HAVING A CLASS B FLAME SPREAD RATING WHEN TESTED IN ACCORDANCE WITH ASTM E84. LUMBER GRADES 3 COMMON, COMMERCIAL OR BETTER GRADES FOR CEDARS, REFER TO THE MANUFACTURER'S INSTALLATION INSTRUCTIONS AND PRODUCT DATA SHEETS.

**SITE-BUILT DECK FRAMING:**

FIRE-RETARDANT-TREATED WOOD IDENTIFIED FOR EXTERIOR USE THAT COMPLIES WITH THE REQUIREMENTS OF SECTION 2303.2

**GENERAL MATERIAL NOTES:**

- NO SUBSTITUTIONS OR ALTERNATES MAY BE USED FOR ANY FINISH, PRODUCT OR FIXTURE WITHOUT FIRST OBTAINING WRITTEN AUTHORIZATION FROM CONNECT HOMES
- VOC COMPLIANCE - CAULKS, SEALANTS, ADHESIVES, COMPLIANT WITH MIR LIMITS FOR ROC AND OTHER COMPOUNDS
- PAINTS AND COATINGS COMPLIANT WITH VOC LIMITS
- AEROSOLS AND COATINGS COMPLIANT WITH MIR LIMITS FOR ROC AND OTHER TOXIC COMPOUNDS- AEROSOLS AND COATINGS COMPLIANT WITH MIR LIMITS FOR ROC AND OTHER TOXIC COMPOUNDS
- MOISTURE CONTENT OF FLOORS AND WALLS CHECKED BEFORE ENCLOSURE
- PARTICLEBOARD, MEDIUM DENSITY FIBERBOARD (MDF), AND HARDWOOD PLYWOOD USED IN INTERIOR FINISH SYSTEMS SHALL COMPLY WITH LOW FORMALDEHYDE EMISSION STANDARDS

NOTE FOR ALL PRODUCTS: FOLLOW AND COMPLY WITH ALL MANUFACTURER SPECIFICATIONS AND GUIDELINES FOR PREPARATION, COMPATIBILITY, DELIVERY AND HANDLING, INSTALLATION, PROTECTION AND WARRANTY REQUIREMENTS

METALS	
CORRUGATED METAL SIDING PANEL	Manufacturer: Taylor Metals Product: 1" T4 wall Size: 40", 5' Min Panel x 31' Max Panel Gauge: 24 Gauge (Confirm span and wind load req, with Structural Engineer) Finish: Kynar Coated (Manufacturer Finish), TBD Attachment: Color matched #10 x 1" Aster Wood Screws
METAL TRIM PIECES	Manufacturer: Avengers Metals Product/Sizes/ Finishes: See Profile Sheet, A-53(B) Attachment: Color matched #10 Wood Screws and 1/8" Rivets
METAL FLASHING AND TRIM	Manufacturer: Avengers Metals Product/Sizes/ Finishes: Varies, See Metal Profile Sheet. Finish TBD Attachment:
GUTTER AND ACCESSORIES	Manufacturer: Avenger Metals Product: Custom Gutter Profile, 24 Ga., Color to match Metal Trim Include: Gutter pre-made corners Metal downspout outlets for 4"x3" downspouts All-purpose bar Gutter straps @ 2'-0" o.c. Gutter Sealant or Metal-caulk
DOWNSPOUTS	Manufacturer: American Gutters Product/Sizes/ Finishes: Varies, See Metal Profile Sheet. Color to Match Metal Trims Attachment: Downspout Pipe Saddle Hangers

WOODS/FIBERBOARDS	
VERTICALLY ORIENTED TONGUE AND GROOVE WOOD SIDING	Wood: Western Red Cedar Grade: STK Size/Pattern: Nominal 1" x 4" x 12', Tongue and Groove Siding, V-Joint, S1S Dressing: Smooth Remarks: Back prime all siding before installation. Fasteners: 2-1/2" 24Ga Stain: See "Paints" Design: Solid sawn wood siding W/NO through holes or loose knots, installed over structural plywood, tongued and grooved in a vertical orientation w/minimum nominal 4" wide and nominal 1" thick boards, "Western Red Cedar"
SHEATHING	Wall: 3/2" Structural 1, 1/2" Perf Cat, Zip System Sheathing, 4' x 10' Roof: 15/32" APA RATED structural 1 Sheathing, 4' x 10'

**THERMAL AND MOISTURE PROTECTION**

FLEXIBLE FLASHING	At Penetrations Manufacturer: ZIP SYSTEM Product: Zip System Stretch Tape
	At Doors and Windows Manufacturer: ZIP SYSTEM Product: Zip System Liquid Flashing
	At Doors and Windows Manufacturer: ZIP SYSTEM Product: Zip System Tape
SEALANT	General Manufacturer: DAP Product: All Purpose Acrylic Latex Caulk Plus Silicone Remarks: Colors to match adjacent building finishes. Verify compatibility with all building wrap and flexible flashing products.
	Bathrooms & Kitchens Manufacturer: DAP Product: Kwik-Seal Kitchen and Bath Adhesive Caulk - Waterproof Seal
ROOFING ASSEMBLY	Membrane: Membrane : Sarnafil G 410-60 SA, PVC thermoplastic membrane, 60 mil Color: White Roof Deck Board/ Rigid Insulation: Carlisle Securshield Polyiso 1" Insulation Note: Place 3" Piranha Plate cupped side down, screw tight so plate doesn't turn, but do not dimple plate. See Plumbing and Mechanical Schedules for sizes. Vent Flashing: Total Roof R-Value = R-38.

**PAINTS**

F-P5 STEEL PAINTS	Steel Prep: Enchem SteelPrep 300 Steel Prime: Sherwin-Williams KEM AQUA 70P, 1 Coat Steel Paint: Sherwin-Williams Pro Industrial DTM Acrylic (eg-she) Color: TBD
FP-6 DECK STAIN	Wood Stain for Exterior Decking Manufacturer: Sherwin Williams Product: SuperDeck Color: Semi-Transparent or Solid Stain : TBD Remarks: Back Prime and Face Stain. Factory to provide sample Follow manufacturer instructions for application. Wipe off all excess



April 23, 2019

**Client:** Connect-Homes  
706 S. Hill Street Suite #1060  
Los Angeles, CA 90014

**Attention:** Gordon Stott

**Scope:**  
This report contains the reference to the test method, conditioning of sample, description of material, and test results.

**Test Method:**  
This test was conducted in accordance with ASTM E136, "Standard Test Method for Behavior of Materials in a Vertical Tube Furnace at 750°C".

**Disclaimer:** This is a factual report of the results obtained from the laboratory test of sample products. The results may be applied only to the products tested and should not be construed as applicable to other similar products of the manufacturer. The report is not a recommendation or a disapproval by VTEC Laboratories, Inc. of the material tested. While this report may be used for obtaining product acceptance, it may not be used in advertising.

**Notice:** VTEC Laboratories Inc. will not be liable for any loss or damage resulting from the use of the data in this report, in excess of the invoice. This report pertains to the sample tested only. Such report shall not be interpreted to be a warranty, either expressed or implied as to the suitability or fitness of said sample for such uses or applications, as the party contracting for the report may apply such sample.

VTEC #100-6077      CONNECT-HOMES      ASTM E136

**Material Tested:**  
Supplier: Connect-Homes  
Product Description: Metal Sales T4 - Wall Panel  
24 Gauge Steel  
Finish: PVDF (Kynar 500 @)  
51 mm x 38 mm x 38 mm  
Color: White, Silver  
Sample Selection: Supplier  
Material Description by: Supplier and VTEC  
Date of Selection: December 2004  
Purpose of Test: Combustion Characteristics

**Conditioning:**  
The specimens were conditioned according to the ASTM E136 specification.

**Results:**  
The conditions for passing the test are as follows:

1. Zero weight loss
2. No flaming after the first 30 seconds
3. Final center and surface temperatures must be less than 30°C above the furnace starting temperature (750°C)

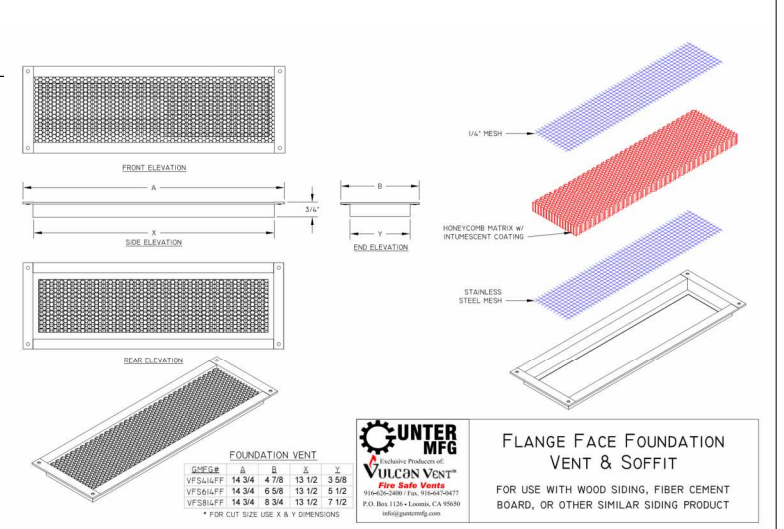
Sample #	Weight Before (grams)	Weight After (grams)	Final Center Temperature (deg.C)	Final Surface Temperature (deg.C)	Weight Loss (percent)	Flaming After First 30 Seconds?
1	469.7	465.7	749	749	0.9	No
2	451.5	448.3	748	750	0.7	No
3	440.9	438.1	750	750	0.6	No
4	435.6	432.5	751	755	0.7	No
<b>Average:</b>	<b>449.4</b>	<b>446.1</b>	<b>749</b>	<b>751</b>	<b>0.7</b>	

Samples were composed of multiple 50mm by 38mm by 8.635mm tiles stacked and bound together to create the necessary sample size. The tested product met all requirements as defined by the ASTM E136.

Neil Schultz  
Executive Director

Amirudin Rahim  
Technical Director

ASTM E136 TESTING FOR CONNECT-HOMES ON METAL SALES T4-WALL PANEL 24 GAUGE STEEL FINISH: PVDF (KYNAR 500 @) VTEC #100-6077 TESTED: APRIL 23, 2019

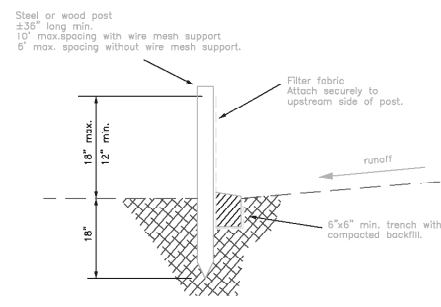
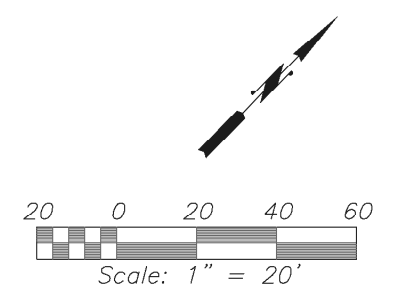


**FLANGE FACE FOUNDATION VENT & SOFFIT**

FOR USE WITH WOOD SIDING, FIBER CEMENT BOARD, OR OTHER SIMILAR SIDING PRODUCT

UNTER MFG  
VULCAN VENT  
Fire Safe Vents  
1100-Durham Pk., Newark NJ 07102  
P.O. Box 1138 • Lovell, CA 95026  
info@untermfg.com

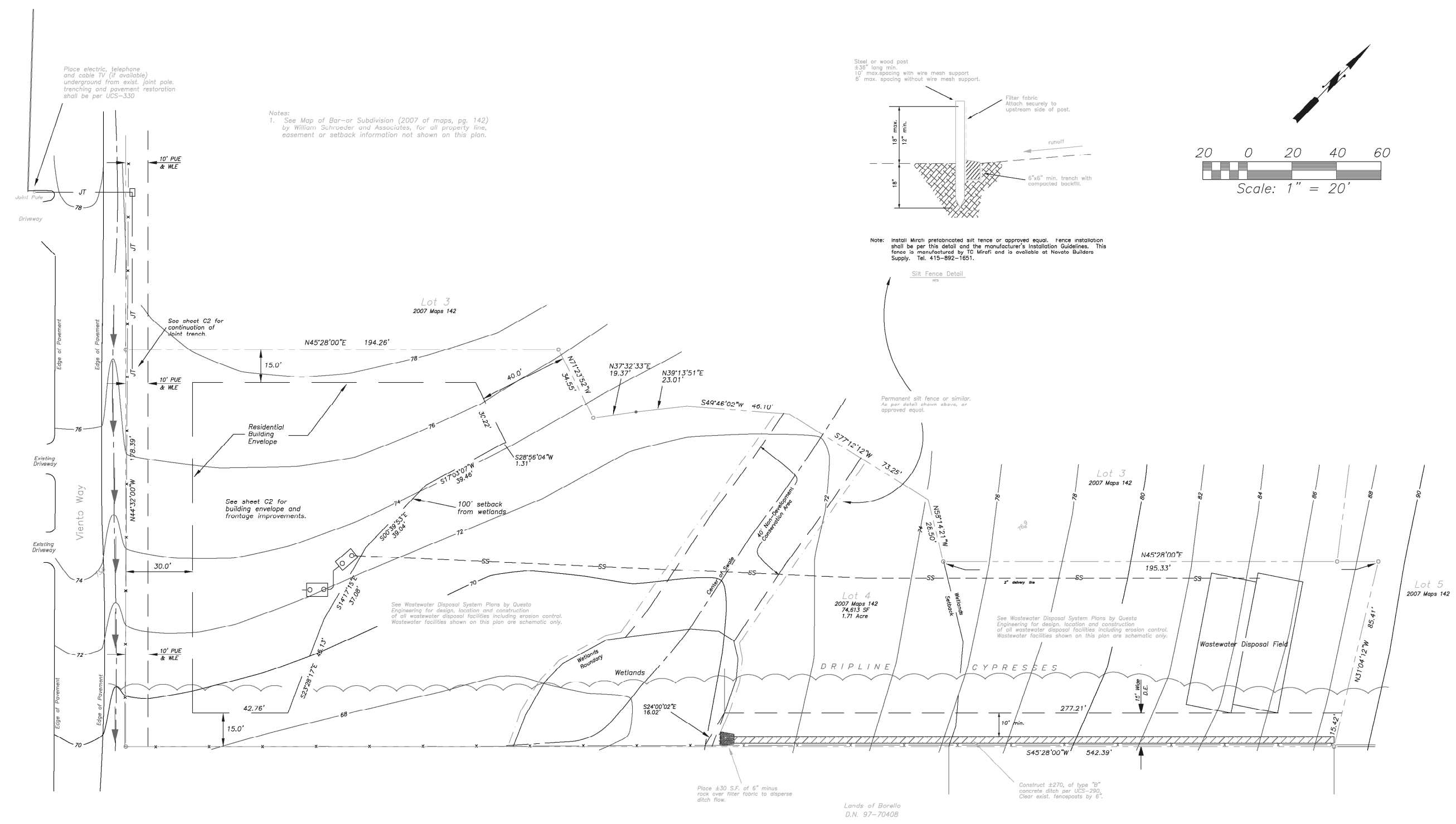




Note: Install Mirafi precast concrete silt fence or approved equal. Fence installation shall be per this detail and the manufacturer's Installation Guidelines. This fence is manufactured by TC Mirafi and is available at Naveto Builders Supply. Tel. 415-892-1651.

Silt Fence Detail

Permanent silt fence or similar. As per detail shown above, or approved equal.



Notes:  
1. See Map of Bar-or Subdivision (2007 of maps, pg. 142) by William Schroeder and Associates, for all property line, easement or setback information not shown on this plan.

Place electric, telephone and cable TV (if available) underground from exist. joint pole. Trenching and pavement restoration shall be per UCS-330

Place ±30 S.E. of 6" minus rock over filter fabric to disperse ditch flow.

Construct ±270, of type "B" concrete ditch per UCS-290. Clear exist. fenceposts by 6".

Lands of Borello  
D.N. 97-70408

Preliminary Plans  
Not for Construction  
4-15-2010

D:\LOT-2009\lot-or Lot 4\day\Lot4\_SP\_Sheet3.dwg

REVISION BLK.	NUMBER	DATE	DESCRIPTION	BY	DRAWN:	D.W.
					DESIGNED:	D.W.
					SCALE:	As Shown
					DATE:	
					CHECKED:	M.P.

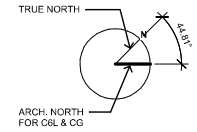


White & Prescott  
Engineering and Surveying  
1620 Grant Avenue  
Novato, CA 94945  
415.897.7730

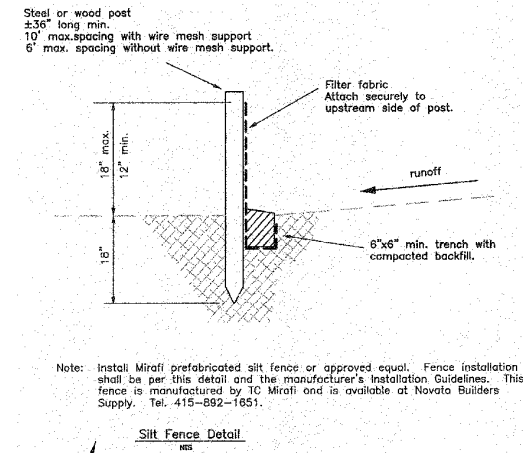
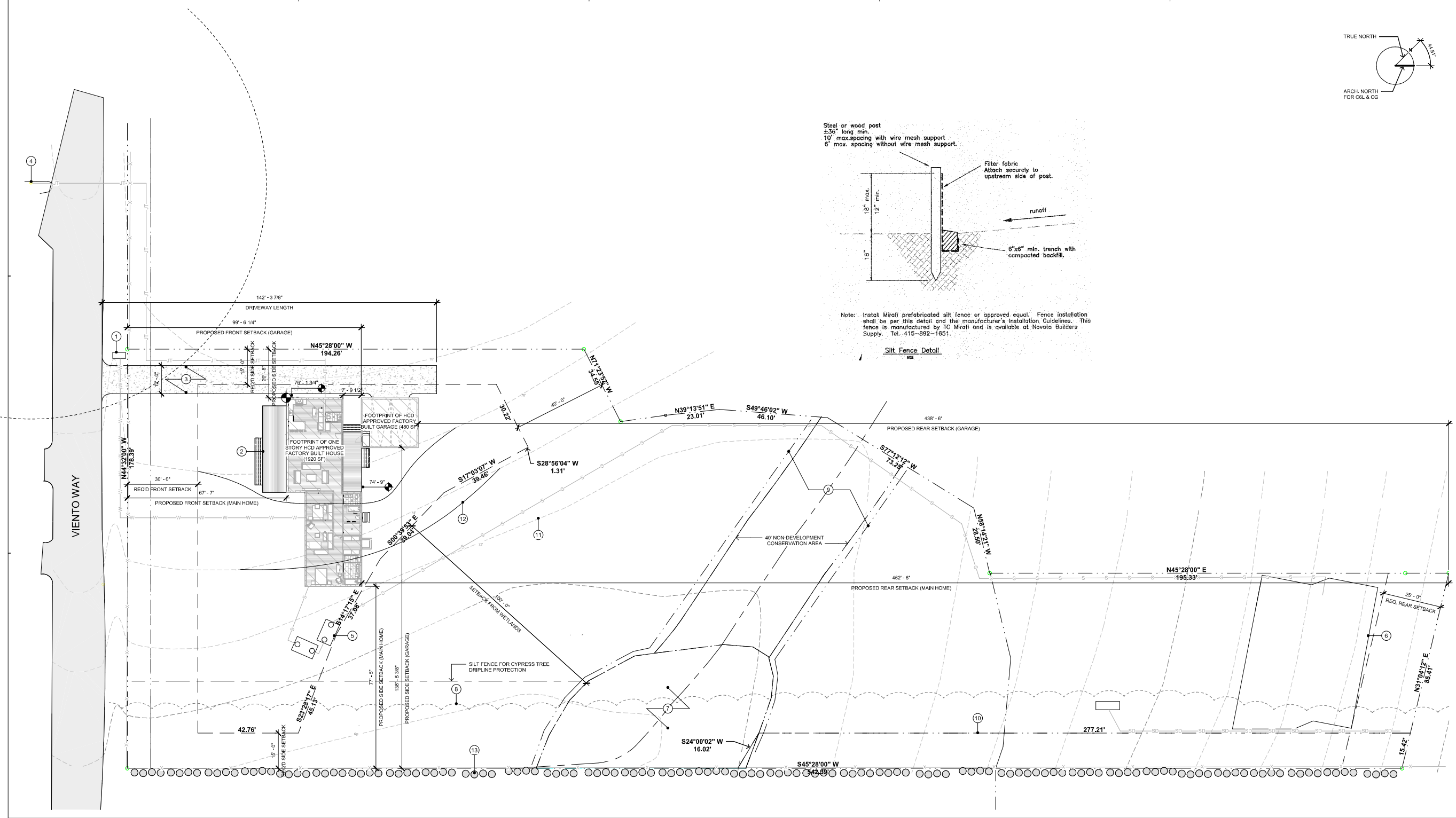


Hoppe Units Construction  
54 Viento Way, Point Reyes Station, CA  
**Entire Lot Site Plan**

SHEET  
**C3**  
OF 5 SHEETS  
FILE: 05-101



L - SITE PLAN  
1/16" = 1'-0"



**SITE PLAN SHEET NOTES.**

NOTE NUMBER	NOTE TEXT
1	(E) WATER METER
2	(N) SITE BUILT UNCOVERED DECK AND STAIRS BY OTHERS (TYP.)
3	(N) DRIVEWAY
4	(E) JOINT POLE
5	(N) 1500 GALLON SUMP TANK SEE C SHEETS FOR DETAIL
6	(N) SEPTIC SYSTEM SEE C SHEETS FOR DETAIL
7	(E) WETLANDS
8	(E) CYPRESS TREE DRIPLINE
9	PERMANENT SILT FENCE OR SIMILAR FOR WETLAND PROTECTION
10	(E) EASEMENT
11	(E) GRADE CONTOUR (DASH)
12	(N) PROPOSED GRADE CONTOUR (LINE)
13	(E) CYPRESS TREES (NOT ON PROPERTY AND NOT TO BE REMOVED) TYP.
14	(N) HVAC CONDENSER (NOISE GENERATOR) SEE SPEC IN DWG. 5 ABOVE
15	(N) EXTERIOR LIGHT (SEE SPEC ON DWG. #4 ABOVE)

**LEGEND**

	FACILITY BUILT SCOPE. REFER TO HCD APPROVED SET (M-SHEETS) FOR MORE INFO.
	(E) TREE OR STUMP DIAMETER AND SPECIES AS NOTED
	FOUNDATION WORKPOINT
	PROPERTY LINE
	SETBACK LINE
	EASEMENT LINE
	(E) FENCE
	(N) JOINT TRENCH
	(N) SEWER LINE
	(N) WATER LINE
	(N) STORM DRAIN LINE
	CONTOURS



**SAMSUNG** SUBMITTAL: AJR08BXJCH4A (LJN-9834B) Samsung F.M Series, 4 Port Condensing Unit

Job Name: \_\_\_\_\_ Location: \_\_\_\_\_  
 Purchaser: \_\_\_\_\_ Engineer: \_\_\_\_\_  
 Submitted to: \_\_\_\_\_ Reference:  Approval  Construction   
 Unit Designation: \_\_\_\_\_ Schedule # \_\_\_\_\_

Model	US Code	Model Number	SEER2	SEER2 (Ducted / Mixed / Non-Ducted) <sup>2</sup>	SEER2 (Ducted / Mixed / Non-Ducted) <sup>2</sup>	SEER2 (Ducted / Mixed / Non-Ducted) <sup>2</sup>	SEER2 (Ducted / Mixed / Non-Ducted) <sup>2</sup>	SEER2 (Ducted / Mixed / Non-Ducted) <sup>2</sup>
Capacity	Cooling (Btu/h)	6,500 / 12,000 / 20,000	18.8	18.0 / 18.6	18.8	18.0 / 18.6	18.8	18.0 / 18.6
Power	Max. Current <sup>3</sup>	12.2	12.2	12.2	12.2	12.2	12.2	12.2
Dimensions	W x H x D (in)	37 x 39 x 18 x 13	37	39	18	13	37	39

**General Information**

- Auto or manual addressing of indoor units
- The outdoor unit shall supply power individually to the indoor units via 14/3 AWG power wire
- Auto-reset after power loss
- Available maximum current setting option to reduce operating current
- System energy consumption can be viewed using Samsung SmartThings mobile app (not revenue grade, for reference only)
- Soft-start to reduce current demand during compressor start
- Optional snow accumulation prevention setting to prevent snow piling against the outdoor units

**Construction**

- The outdoor unit shall be galvanized steel with a baked on powder coated finish for durability

**Heat Exchanger**

- The heat exchanger shall be mechanically bonded fit to copper tube

**Controls**

- Control signal shall be a 24VDC signal
- Interconnecting control wire between outdoor and indoor units shall be 18/2 AWG
- The system shall integrate with Samsung Controls Solution without the use of an interface module

**Refrigerant System**

- The refrigerant shall be R410A
- The compressor shall be hermetically sealed, inverter controlled, Twin Rotary R410C
- Refrigerant flow shall be controlled by 4 separate electronic expansion valves at outdoor unit

**Warranty**

10 years compressor, 10 year parts, 1 year limited labor (registration required)

Performance data as listed by AHRI in AHRI 310 240 (2017) and AHRI 310 1 (2017).  
 Performance data as listed by AHRI in AHRI 310 240 (2017), Climate Partner, 4/1/2023.  
 These claims based on higher performance units of non-AHRI indoor units.  
 This publication reflects both the 1987 Appendix M metric (SEER) and the 2023 Appendix M1 metric (SEER2). Efficiency requirements are published at 10 C.F.R. 430.32(c).  
 Please refer to www.AHRI.net.org for more information about updated energy metrics.  
 Samsung HVAC maintains a policy of ongoing development, specifications are subject to change without notice. Refer to www.AHRI.net.org for current reference numbers.  
 © 2023 Samsung HVAC, Inc. All rights reserved. 888-899-6957 www.SamsungHVAC.com

**CONNECT HOMES**

304 S BROADWAY, #320  
 LOS ANGELES, CA 90013  
 t: 310.622.9271  
 e: info@connect-homes.com

**CONNECT 6L: DANNER RESIDENCE**

54 Viento Way,  
 Point Reyes Station, CA 94956  
 APN#119162226

DATE ISSUED

LEGISLATED ARCHITECT  
 GORDON STOTT  
 C-39556  
 01/31/2024  
 HENRIK  
 DPH

Legal Disclaimer:  
 The floor plans, elevations and product details on the seal are the property of Home E.C., Copyright © 2024. The use of these drawings and specifications shall be restricted to the project of Home E.C. product and shall not be used, in whole or in part, for any other project for which they were not intended. Home E.C. Inc. Reproduction or distribution by any means, or in any form, is prohibited. This is a Home E.C. product and specifications shall comply with Home E.C. Inc. without prejudice. You will comply with Home E.C. Inc. and shall be liable for any and all consequences that may arise from the use of these drawings.

**MODEL HOME**  
 CONNECT 6L+CG

**SHEET SET**  
 LOCAL

**SHEET TITLE**  
 ENLARGED SITE PLAN

**SHEET, SHEET / MODEL SET NUMBER / HOME**  
 L-1.1B

HVAC CONDENSER CUTSHEET NO SCALE 5

**HINKLEY & R.**

WINKLEY LIGHTING, INC.  
 25300 W. GULF BARRAGE | AUSTIN, TEXAS 78746  
 (512) 440-8533 | (512) 443-6533  
 HINKLEYLIGHTING.COM | 1-800-834-6600

**ATLANTIS 1646SK-LED**  
 SATIN BLACK

WIDTH:	8.0"
HEIGHT:	6.0"
WEIGHT:	3.0 LBS
MATERIAL:	EXTRUDED ALUMINUM
GLASS:	ETCHED GLASS LENS
SOCKET:	BW LED
DARK SKY:	YES
LED INFO:	
LUMENS:	600
CRI:	90
COLOR TEMP:	3000K
INCANDESCENT EQUIVALENCY:	1-50w
DIMMABLE:	Yes, on any Incandescent, MLV, ELV, or CL dimmer
NOTES:	PATENT: US AND FOREIGN PATENTS PENDING THIS PATENT WILL CAST LIGHT DOWN
EXTENSION:	4.3"
TID:	3.0"
CERTIFICATION:	C-US WET RATED
VOLTAGE:	120V
LPC:	840663164657

AT HINKLEY, WE EMBRACE THE DESIGN PHILOSOPHY THAT YOU CAN MERGE TOGETHER THE LIGHTING, FURNITURE, ART, COLORS AND ACCESSORIES YOU LOVE INTO A BEAUTIFUL ENVIRONMENT THAT DEFINES YOUR OWN PERSONAL STYLE. WE HOPE YOU WILL BE INSPIRED BY OUR COMMITMENT TO KEEP YOUR LIFE AGLOW.

life AGLOW

**EXT. LIGHT CUTSHEET NO SCALE 4**

Legend:

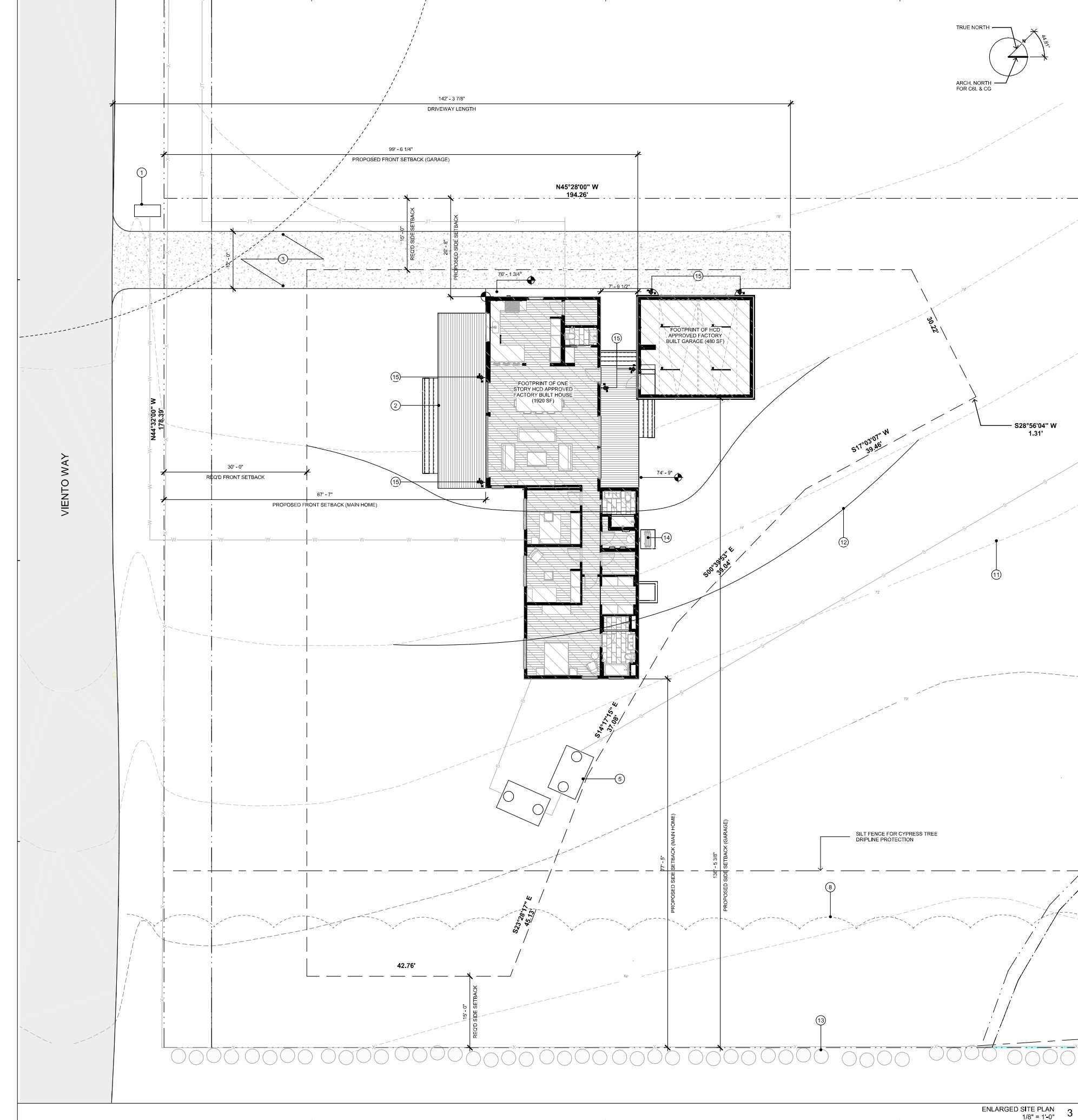
- FACTORY BUILT SCOPE. REFER TO HCD APPROVED SET (M-SHEETS) FOR MORE INFO.
- (E) TREE OR STUMP DIAMETER AND SPECIES AS NOTED
- FOUNDATION WORKPOINT
- PROPERTY LINE
- SETBACK LINE
- EASEMENT LINE
- (E) FENCE
- (N) JOINT TRENCH
- (N) SEWER LINE
- (N) WATER LINE
- (N) STORM DRAIN LINE
- CONTOURS

**SITE PLAN SHEET NOTES**

NOTE NUMBER	NOTE TEXT
1	(E) WATER METER
2	(N) SITE BUILT UNCOVERED DECK AND STAIRS BY OTHERS (TYP.)
3	(N) DRIVEWAY
4	(E) JOINT POLE
5	(N) 1500 GALLON SUMP TANK SEE C SHEETS FOR DETAIL
6	(N) SEPTIC SYSTEM SEE C SHEETS FOR DETAIL
7	(E) WETLANDS
8	(E) CYPRESS TREE DRIPLINE
9	PERMANENT SILT FENCE OR SIMILAR FOR WETLAND PROTECTION
10	(E) EASEMENT
11	(E) GRADE CONTOUR (DASH)
12	(N) PROPOSED GRADE CONTOUR (LINE)
13	(E) CYPRESS TREES (NOT ON PROPERTY AND NOT TO BE REMOVED) TYP.
14	(N) HVAC CONDENSER (NOISE GENERATOR) SEE SPEC IN DWG. 5 ABOVE
15	(N) EXTERIOR LIGHT (SEE SPEC ON DWG. #4 ABOVE)

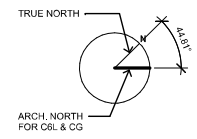
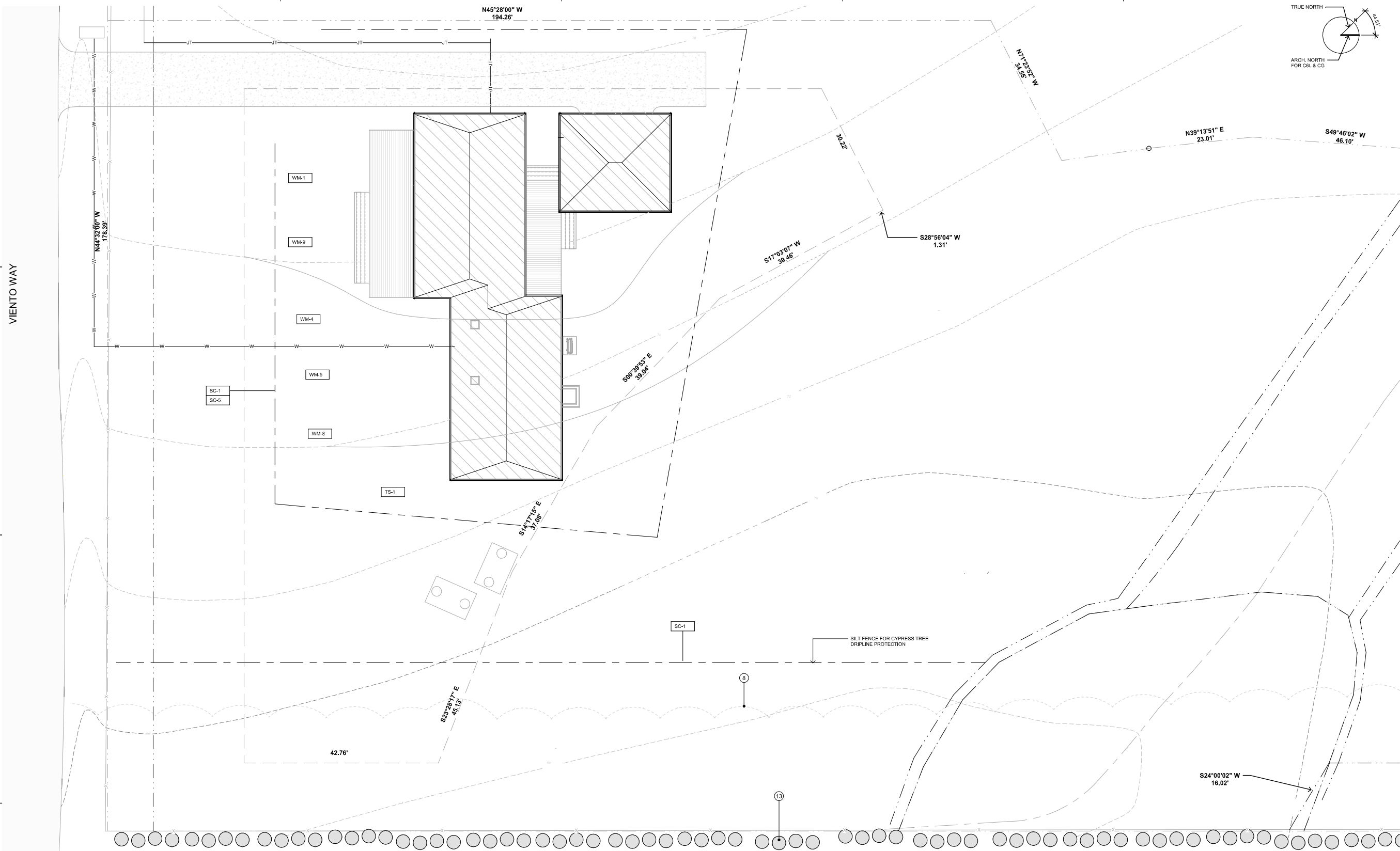
**SHEET NOTES NO SCALE 2**

**SITE PLAN LEGEND NO SCALE 1**



ENLARGED SITE PLAN 1/8" = 1'-0" 3





DATE ISSUED	

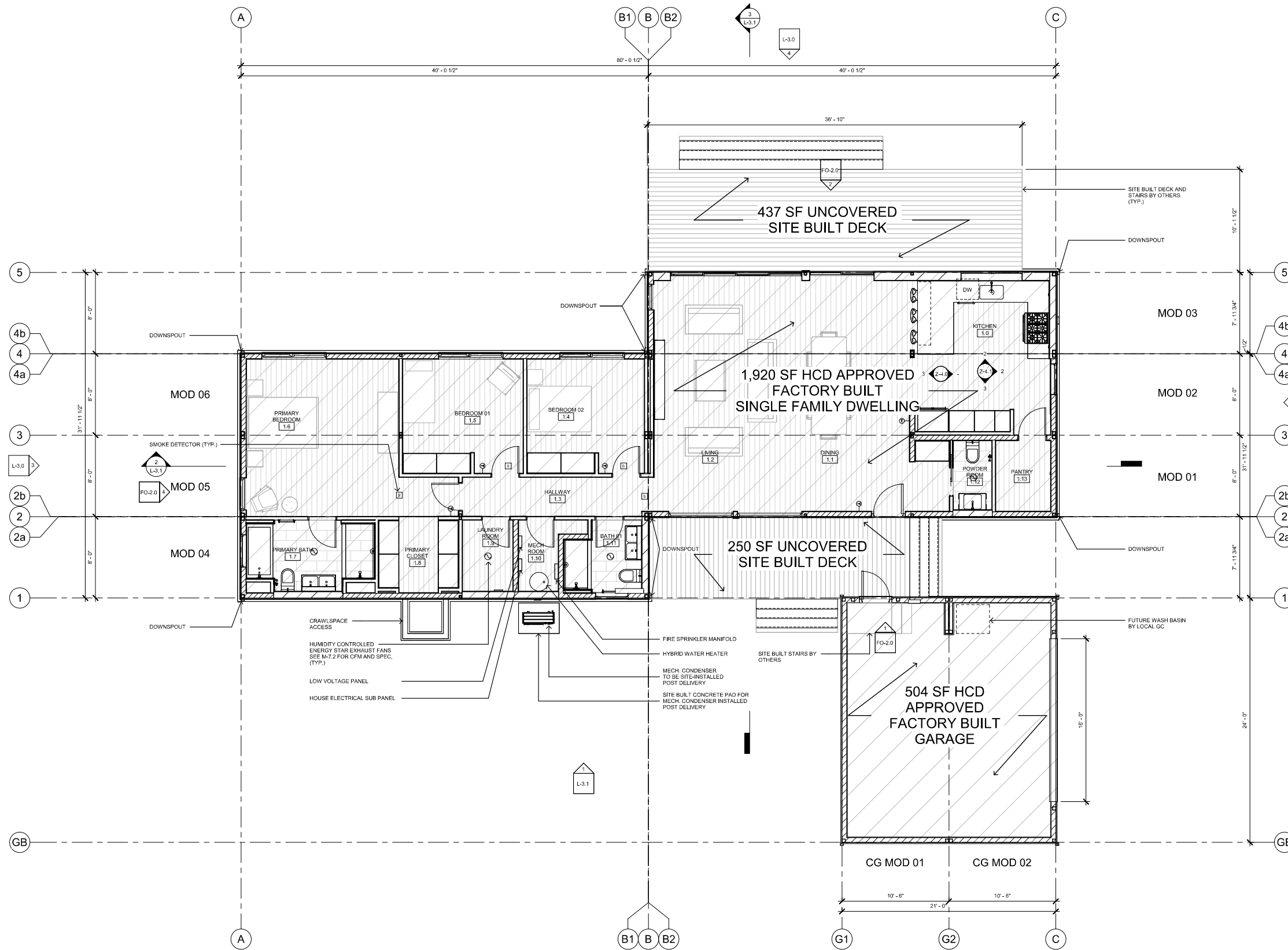


**L - SITE DEVELOPMENT PLAN**  
1/8" = 1'-0" 2

<p><b>FOLLOW ALL DIRECTIONS OF EROSION CONTROL PLAN PER BMPs AND ALL RELATED LOCAL REQUIRED MEASURES</b></p>	<p><b>BEST MANAGEMENT PRACTICES NOTES:</b></p> <ul style="list-style-type: none"> <li>- NO LANDSCAPE IRRIGATION SYSTEM</li> <li>- LANDSCAPING IS OUTSIDE THE SCOPE OF THIS PROJECT</li> <li>- ALL GRADES ADJACENT TO HOUSE AND GARAGE TO HAVE MIN. 2% SLOPE</li> <li>- DISPLACED TOPSOIL SHALL BE STOCKPILED FOR REUSE IN A DESIGNATED AREA AND COVERED OR PROTECTED FROM EROSION. PROTECTION FROM EROSION INCLUDES COVERING WITH TARPS, STRAW, MULCH, CHIPPED WOOD, VEGETATIVE COVER, OR OTHER MEANS ACCEPTABLE TO THE ENFORCING AGENCY TO PROTECT THE TOPSOIL FOR LATER USE.</li> <li>- THE CONSTRUCTION AREA SHALL BE IDENTIFIED AND DELINEATED BY FENCING TO LIMIT CONSTRUCTION ACTIVITY TO THE CONSTRUCTION AREA. HEAVY EQUIPMENT OR VEHICLE TRAFFIC AND MATERIAL STORAGE OUTSIDE THE CONSTRUCTION AREA SHALL BE LIMITED TO AREAS THAT ARE PLANNED TO BE PAVED.</li> <li>- CONTROL AND PREVENT THE DISCHARGE OF ALL POTENTIAL POLLUTANTS, INCLUDING PAVEMENT CUTTING WASTES, PAINTS, CONCRETE, PETROLEUM PRODUCTS, CHEMICALS, WASH WATER OR SEDIMENTS, RINSE WATER FROM ARCHITECTURAL COPPER, AND NON-STORMWATER DISCHARGES TO STORM DRAINS AND WATER COURSES</li> <li>- STORE, HANDLE, AND DISPOSE OF CONSTRUCTION MATERIALS/WASTES PROPERLY TO PREVENT CONTACT WITH STORMWATER</li> <li>- DO NOT CLEAN, FUEL, OR MAINTAIN VEHICLES ON-SITE, EXCEPT IN A DESIGNATED AREA WHERE WASH WATER IS CONTAINED AND TREATED</li> <li>- TRAIN AND PROVIDE INSTRUCTION TO ALL EMPLOYEES/ SUBCONTRACTORS RE: CONSTRUCTION BMPs</li> <li>- PROTECT ALL STORM DRAIN INLETS IN VICINITY OF SITE USING SEDIMENT CONTROLS SUCH AS BERMS, FIBER ROLLS, OR FILTERS</li> <li>- LIMIT CONSTRUCTION ACCESS ROUTES AND STABILIZE DESIGNATED ACCESS POINTS</li> <li>- DELINEATE WITH FIELD MARKERS CLEARING LIMITS, EASEMENTS, SETBACKS, SENSITIVE OR CRITICAL AREAS, BUFFER ZONES, TREES, AND DRAINAGE COURSES</li> <li>- PERFORM CLEARING AND EARTH MOVING ACTIVITIES ONLY DURING DRY WEATHER</li> <li>- USE SEDIMENT CONTROLS OR FILTRATION TO REMOVE SEDIMENT WHEN DEWATERING AND OBTAIN ALL NECESSARY PERMITS</li> <li>- DIVERT ON-SITE RUNOFF AROUND EXPOSED AREAS; DIVERT OFF SITE RUNOFF AROUND THE SITE</li> <li>- PROTECT ADJACENT PROPERTIES AND UNDISTURBED AREAS FROM CONSTRUCTION IMPACTS USING SEDIMENT BARRIERS AND MULCHING</li> <li>- NONHAZARDOUS CONSTRUCTION AND DEMOLITION WASTE GENERATED AT THE SITE IS DIVERTED TO RECYCLE OR SALVAGE IN COMPLIANCE WITH AT LEAST A 65 PERCENT REDUCTION.</li> </ul>	<p><b>A. VEHICLE AND HEAVY EQUIPMENT INGRESS AND EGRESS TO THE CONSTRUCTION SITE SHALL BE LIMITED TO PAVED OR REINFORCED ENTRANCES. REINFORCED ENTRANCES SHALL BE DESIGNED, BUILT, AND MAINTAINED SO AS TO PREVENT SEDIMENT FROM TRACKING-OUT INTO THE PUBLIC RIGHT-OF-WAY ON VEHICLE AND HEAVY EQUIPMENT TIRES.</b></p> <p><b>B. ALL DIRT OR SEDIMENT TRACKED INTO THE PUBLIC RIGHT-OF-WAY SHALL BE PROMPTLY REMOVED AS SOON AS FEASIBLE AND NO LESS FREQUENTLY THAN AT THE END OF EACH WORKING DAY. DRY SWEEPING METHODS ARE TO BE USED FOR SWEEPING.</b></p> <p><b>C. EXISTING VEGETATION SHALL BE PRESERVED WHEREVER FEASIBLE TO MINIMIZE DISTURBED SOIL AREA AND ASSOCIATED EROSION.</b></p> <p><b>D. ALL CONSTRUCTION PRODUCTS INCLUDING UNCURED PAINT, CONCRETE, STUCCO, DRYWALL MUD, AND MORTAR SHALL BE PROTECTED FROM RUN-ON DURING PRECIPITATION AND WASTES DISPOSED OF PROPERLY IN A DESIGNATED WASH-OUT.</b></p> <p><b>E. ALL STOCKPILES OF ERODIBLE MATERIALS SHALL BE PROVIDED WITH EROSION AND SEDIMENT CONTROLS TO PREVENT EROSION AND DUST GENERATION.</b></p> <p><b>F. ALL STORM DRAIN INLETS ON THE SITE OR RECEIVING DIRECT DISCHARGES OF STORMWATER FROM THE SITE SHALL BE PROTECTED FROM SEDIMENT-LADEN DISCHARGES USING APPROPRIATE BEST MANAGEMENT PRACTICES.</b></p>	<p><b>BMP SCHEDULE:</b></p> <ul style="list-style-type: none"> <li>- BMPs NEED TO BE IMPLEMENTED WITH THE COMMENCEMENT OF THE CONSTRUCTION ACTIVITIES, AND MUST BE IMPLEMENTED YEAR ROUND, AS APPROPRIATE, UNTIL THE PROJECT IS COMPLETE.</li> </ul> <p><b>START OF CONSTRUCTION:</b></p> <ul style="list-style-type: none"> <li>- IMPLEMENT ALL REQUIRED BMPs PRIOR TO CONSTRUCTION ACTIVITY</li> </ul> <p><b>DURING CONSTRUCTION:</b></p> <ul style="list-style-type: none"> <li>- SCHEDULE MONTHLY INSPECTIONS OF BMPs AND REPAIR AS NEEDED</li> <li>- INSPECT AND REPAIR BMPs AFTER STORMS</li> </ul> <p><b>AFTER CONSTRUCTION IS COMPLETE:</b></p> <ul style="list-style-type: none"> <li>- REMOVE ALL WASHOUTS AND WASTE MANAGEMENT INSTALLATIONS</li> <li>- REVEGETATE AS SOON AS IS PRACTICABLE</li> </ul>	<p><b>LEGEND</b></p> <ul style="list-style-type: none"> <li> FACTORY BUILT SCOPE. REFER TO HCD APPROVED SET (M-SHEETS) FOR MORE INFO.</li> <li> (E) TREE OR STUMP. DIAMETER AND SPECIES AS NOTED</li> <li> FOUNDATION WORKPOINT</li> <li> PROPERTY LINE</li> <li> SETBACK LINE</li> <li> EASEMENT LINE</li> <li> (E) FENCE</li> </ul>	<p><b>MATERIAL &amp; WASTE MANAGEMENT CONTROL BMPs</b></p> <ul style="list-style-type: none"> <li><b>WM-1</b> MATERIAL DELIVERY AND STORAGE</li> <li><b>WM-4</b> SPILL PREVENTION &amp; CONTROL</li> <li><b>WM-5</b> SOLID WASTE MANAGEMENT</li> <li><b>WM-8</b> CONCRETE WASTE MANAGEMENT</li> <li><b>WM-9</b> SANITARY WASTE MANAGEMENT</li> </ul>	<p><b>TEMPORARY RUNOFF CONTROL BMPs</b></p> <ul style="list-style-type: none"> <li><b>SC-1</b> SILT FENCE</li> <li><b>SC-5</b> FIBER ROLLS</li> <li><b>SC-8</b> SANDBAG BARRIER</li> </ul> <p><b>TOP SOIL PROTECTION</b></p> <ul style="list-style-type: none"> <li><b>TS-1</b> COVERED TOP SOIL STOCKPILE</li> </ul>
	BMP NOTES NO SCALE 6	NON SITE SPECIFIC & TYPICAL EROSION/SEDIMENT CONTROL BMPs NO SCALE 5	BMP SCHEDULE NO SCALE 4	SITE LEGEND NO SCALE 3	BMP LEGEND NO SCALE 1	



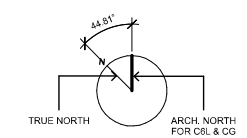
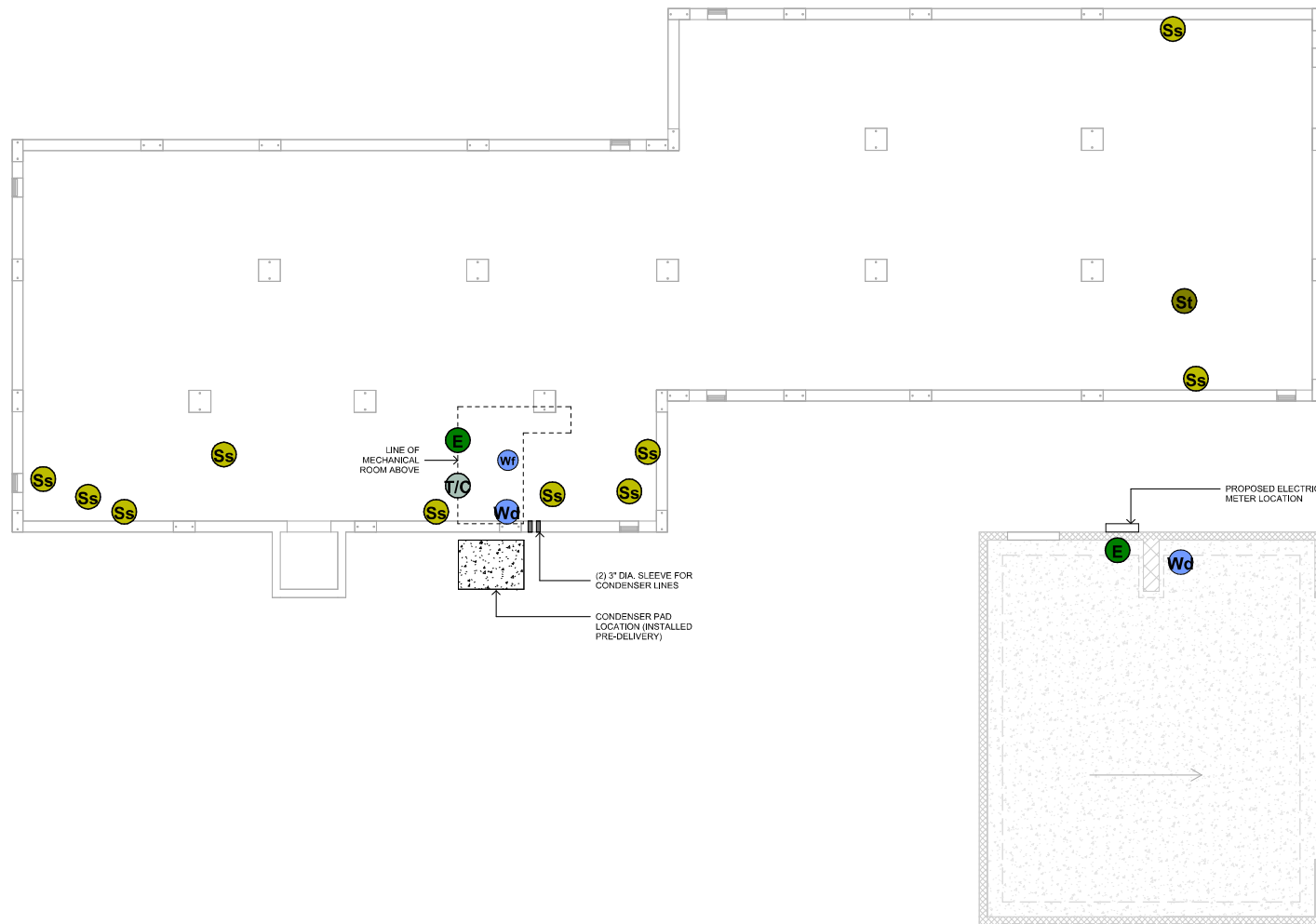




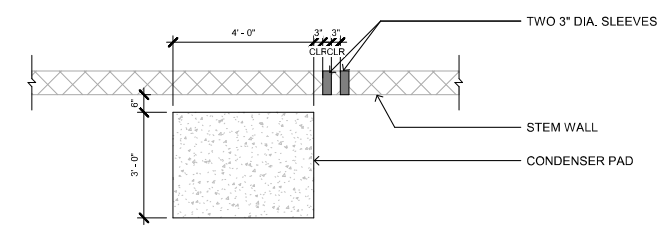
- S SMOKE/ CARBON MONOXIDE DETECTOR COMBO DEVICE
- SMOKE/ CO DEVICES SMOKE ARE INSTALLED IN EACH SLEEPING ROOM AND OUTSIDE EACH SEPARATE SLEEPING AREA IN THE IMMEDIATE VICINITY OF THE BEDROOMS.
- E EXHAUST FAN
- FANS SHALL BE ENERGY STAR COMPLIANT AND BE DUCTED TO TERMINATE TO THE OUTSIDE OF THE BUILDING.
- FANS, NOT FUNCTIONING AS A COMPONENT OF A WHOLE HOUSE VENTILATION SYSTEM, MUST BE CONTROLLED BY HUMIDITY CONTROL.

NOTE:  
GRIDLINES ARE LOCATED AT OUTSIDE FACES OF CORNER COLUMNS OR SIDE PLATES (WHEN MODULE CONNECTIONS OCCUR).  
ALL DIMENSION TO FACE OF STRUCTURE  
SEE 1/8"-2/0" FOR ROOM DIMENSIONS

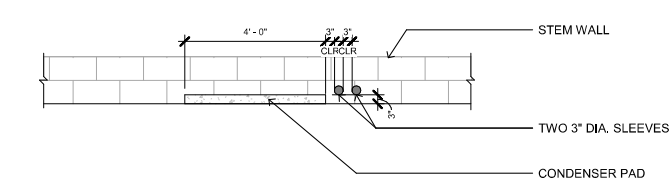
- 2X4 WOOD FRAMED WALL
- 2X6 WOOD FRAMED WALL
- FACTORY BUILT



**NOTE:**  
**FOR DIAGRAMMATIC PURPOSES ONLY.**  
**CONTRACTOR TO COORDINATE AND VERIFY**  
**EXACT LOCATIONS AND SERVICE SIZE WITH**  
**UTILITY COMPANIES AND SITE CONDITIONS**



CONDENSER PAD SELEVE DIAGRAM PLAN  
 1/2" = 1'-0" 3



CONDENSER PAD SLEEVE DIAGRAM  
 1/2" = 1'-0" 2

PRE DELIVERY UTILITY PLAN  
 1/4" = 1'-0" 6

**LOCAL GC OR OWNER PRE-DELIVERY SCOPE OF WORK:**

A) **SEWER:**

- RUN SANITARY SEWER LINE FROM PROPERTY LINE TO STUB UP/POINT OF CONNECTION(S) IN CRAWLSPACE
- COORDINATE WITH LOCAL RESPONSIBLE AGENCY IF NEW SEWER LATERAL WILL BE REQUIRE INSTALL SEPTIC SYSTEM (IF APPLICABLE)

B) **WATER:**

- RUN WATER MAIN SERVICE LINE FROM WATER METER TO MANIFOLD/ SHUT OFF VALVE OUTSIDE
- CRAWLSPACE AND SUPPLY STUB UPS/ POINTS OF CONNECTION FOR DOMESTIC SERVICES AND FIRE SPRINKLER SERVICE
- COORDINATE METER SIZE AND MAIN LINE SIZE REQUIREMENTS WITH LOCAL UTILITY COMPANY AND FIRE SPRINKLER REQUIREMENTS
- COORDINATE LOCATION OF EXTERIOR HOSE BIBS
- IF PROPERTY IS ON WATER WELL, INSTALL WATER WELL, TANKS, PUMPS, (IF APPLICABLE)

C) **ELECTRICAL:**

- INSTALL PIPE SLEEVE AND STUB UP/ POINT OF CONNECTION IN CRAWLSPACE TO PULL FUTURE ELECTRIC SERVICE INTO CRAWLSPACE
- COORDINATE SERVICE REQUIREMENTS AND SERVICES SIZE WITH LOCAL POWER COMPANY
- IF ADDITIONAL STRUCTURES ON SITE (GARAGE, CARPORT), RUN UNDERGROUND CONDUIT FROM CRAWLSPACE OR MAIN SERVICE PANEL TO THOSE LOCATIONS
- INSTALL TEMPORARY POWER, COORDINATE WITH LOCAL POWER COMPANY

D) **FIRE:**

- COORDINATE FIRE SAFETY REQUIREMENTS (DRIVEWAYS, TURNOUTS, HYDRANTS, WATER SUPPLY WITH LOCAL FIRE DEPARTMENT)

**LOCAL GC OR OWNER POST-DELIVERY SCOPE OF WORK:**

A) **SEWER:**

- INSTALL SANITARY DRAINAGE BRANCH IN CRAWLSPACE CONNECTING SANITARY DRAIN/WASTE/VENT STUB DOWNS UNDER HOUSE AND CONNECT TO SANITARY DRAINAGE STUB UP IN CRAWLSPACE.
- PROVIDE ACCESSIBLE END OF LINE CLEAN OUTS PER CODE REQUIREMENTS.

B) **WATER:**

- CONNECT WATER SERVICE LINE TO STUB DOWN IN CRAWLSPACE AND CONNECT FIRE SPRINKLER RISER STUB DOWNS UNDER HOUSE TO STUB UP IN CRAWLSPACE, INSTALL HOSE BIBS

C) **ELECTRICAL:**

- COORDINATE ELECTRIC METER LOCATION AND SIZE OF SERVICE WITH LOCAL UTILITY COMPANY
- SUPPLY AND INSTALL MAIN ELECTRICAL PANEL AND RUN OVERHEAD OR UNDERGROUND SERVICE TO METER
- CONNECT ELECTRIC SERVICE FROM MAIN SERVICE PANEL TO SUB PANELS
- RUN SERVICE TO CONDENSER (IF APPLICABLE)
- IF ADDITIONAL STRUCTURES ON SITE (GARAGE/CARPORT), RUN ELECTRIC SERVICE TO THEM

D) COORDINATE DIRECTLY WITH THE LOCAL TELEPHONE AND CABLE PROVIDERS SERVICING THE AREA TO PROVIDE SERVICE FOR THE HOME, INCLUDING THE INSTALLATION OF TELEPHONE AND CABLE PANELS AND THE PULLING OF LOW VOLTAGE WIRES CONNECTING THE DEVICES INSIDE THE HOUSE TO THE PANELS (IF APPLICABLE)

E) COORDINATE INSTALL OF SOLAR PANELS WITH SOLAR PANEL SUB CONTRACTOR, COORDINATE WITH LOCAL UTILITY COMPANY (IF APPLICABLE)

**LOCAL GC TO COORDINATE UTILITY SLEEVES AT FOUNDATION WITH SERVICES AND STUB DOWNS**

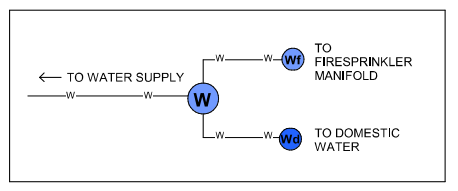
**COORDINATE SLEEVES WITH UTILITY STUBDOWN SERVICES:**

**CONNECT 6L**

(4 QTY)	2" DIA SLEEVE FOR TELEPHONE/DATA/CABLE
(4 QTY)	3" DIA SLEEVE FOR ELECTRIC POWER
(1 QTY)	2" DIA SLEEVE FOR FRESPRINKLER WATER
(1 QTY)	3" DIA SLEEVE FOR DOMESTIC WATER
(1+ QTY)	6" DIA SLEEVE FOR SANITARY MAIN LINE AND ANY ADDITIONAL CLEANOUTS NECESSARY
(2)	4" DIA SLEEVE FOR CONDENSER (SEE LOCATION IN PLAN AND DIAGRAM)

(IF GRAY WATER SYSTEM, PROVIDE FOR ALSO)

- Ss** SANITARY STUB DOWN (EXCEPT TOILETS) 2" ABS PIPE - MALE TERMINATION
- St** SANITARY STUB DOWN (TOILETS ONLY) 3" ABS PIPE - MALE TERMINATION
- Wc** WATER STUB DOWN (DOMESTIC) 3/4" COPPER PIPE - MALE TERMINATION
- Wf** WATER STUB DOWN (FRESPRINKLERS) 3/4" COPPER PIPE - MALE TERMINATION
- E** ELECTRICAL STUB DOWN 2" FLEX ALUMINUM CONDUIT - MALE TERMINATION
- T/C** TELEPHONE/CABLE STUB DOWN 1 1/2" PVC CONDUIT - MALE TERMINATION
- HB** HOSEBIB

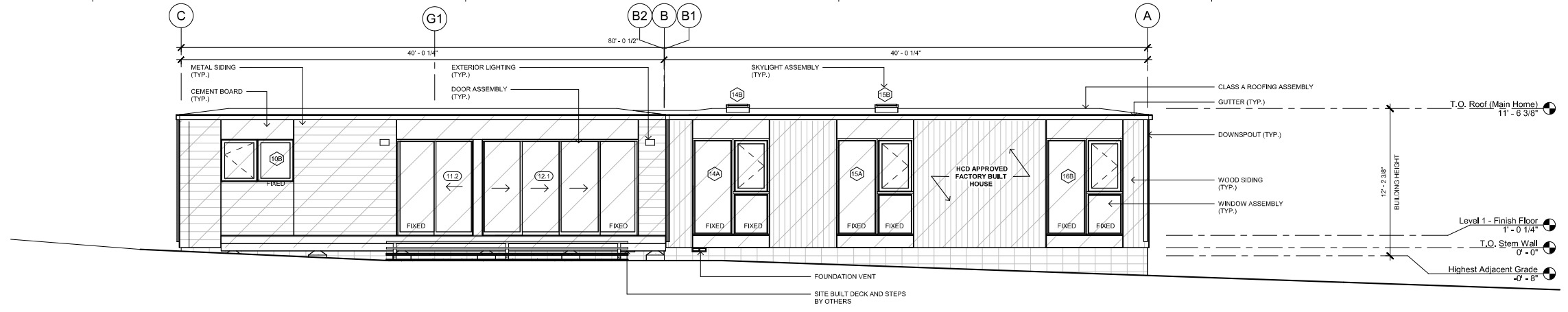


STUBDOWN LEGEND  
 NO SCALE 1

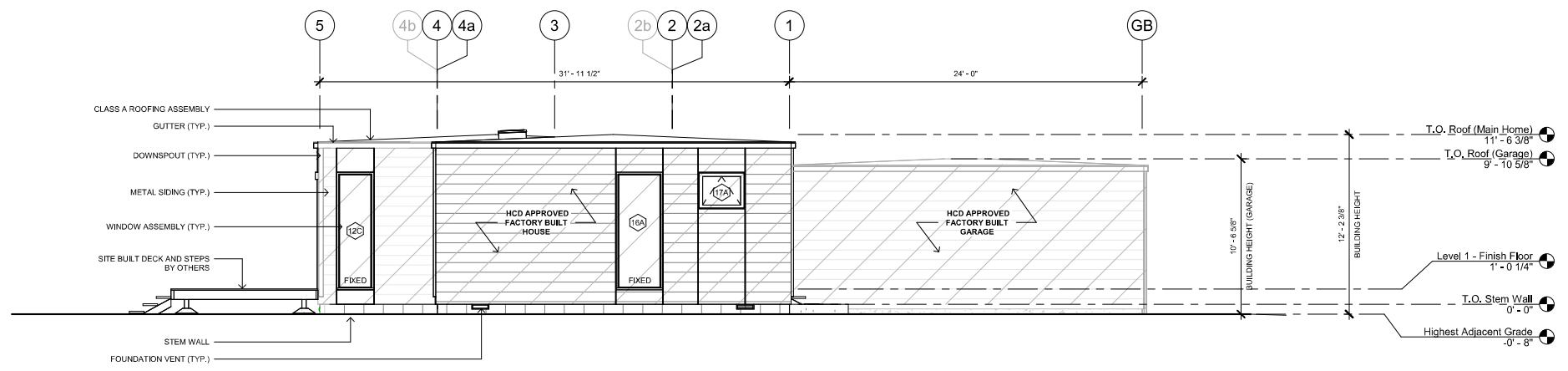
SCOPE NOTES  
 NO SCALE 5

SLEEVE INFORMATION  
 NO SCALE 4

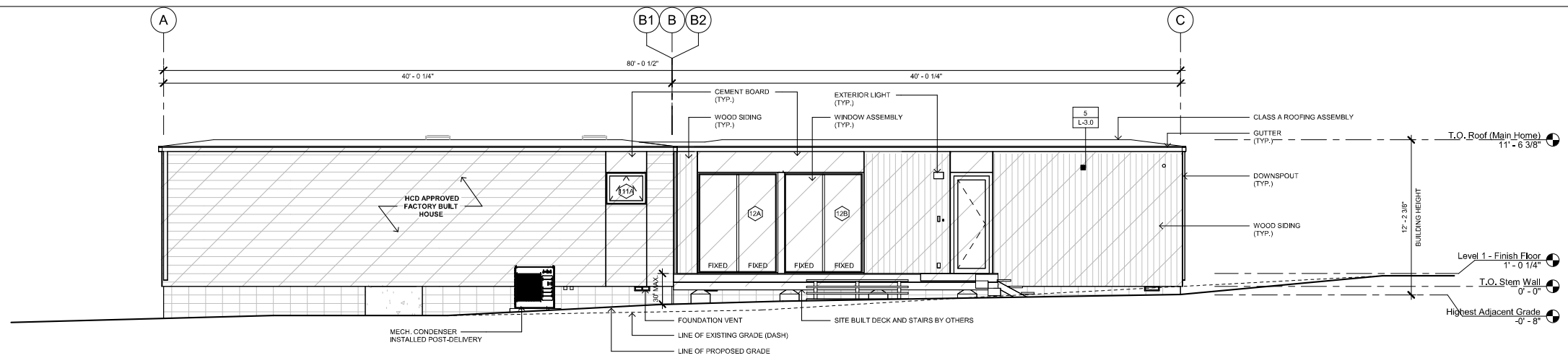




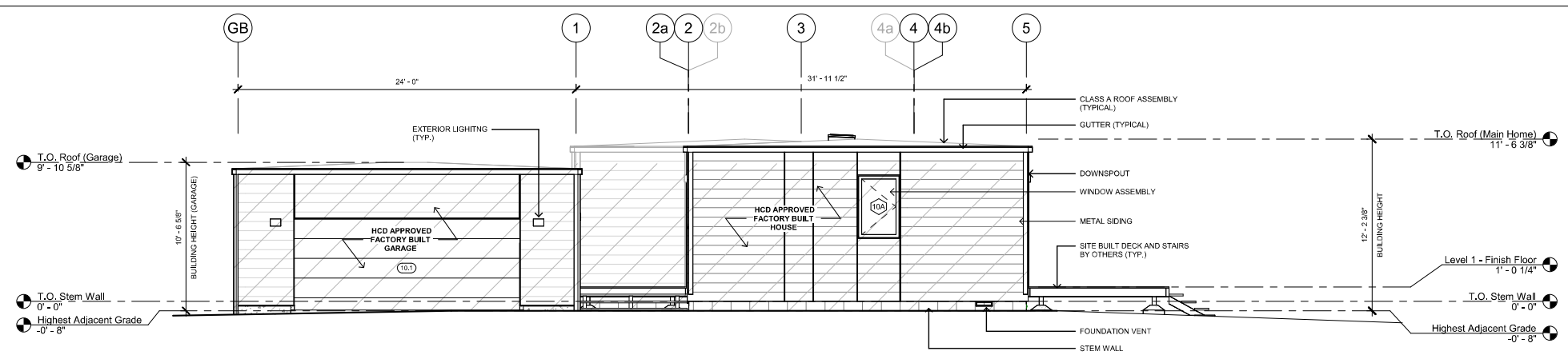
ELEVATION - ARCHITECTURAL NORTH  
1/4" = 1'-0"



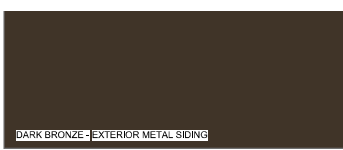
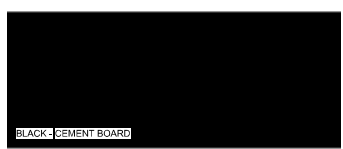
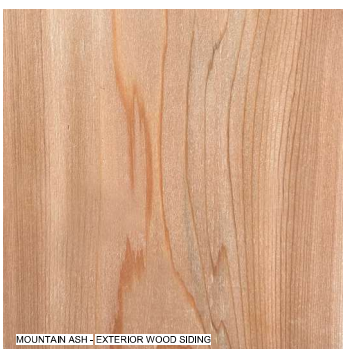
ELEVATION - ARCHITECTURAL WEST  
1/4" = 1'-0"



ELEVATION - ARCHITECTURAL SOUTH  
1/4" = 1'-0"



ELEVATION - ARCHITECTURAL EAST  
1/4" = 1'-0"



SIDING MATERIAL SPEC  
NO SCALE



Legal Disclaimer:  
The floor plan, elevations, sections and specifications are prepared by the architect and are intended to be used in conjunction with the contract documents. The use of these drawings and specifications shall be limited to the project for which they were prepared. No other use, reproduction or distribution is permitted without the express written consent of the architect. This document is the property of the architect and shall not be used, reproduced or distributed in any form without the express written consent of the architect. The architect assumes no liability for any errors or omissions in these drawings and specifications, and shall not be held responsible for any consequences arising from the use of these drawings and specifications.

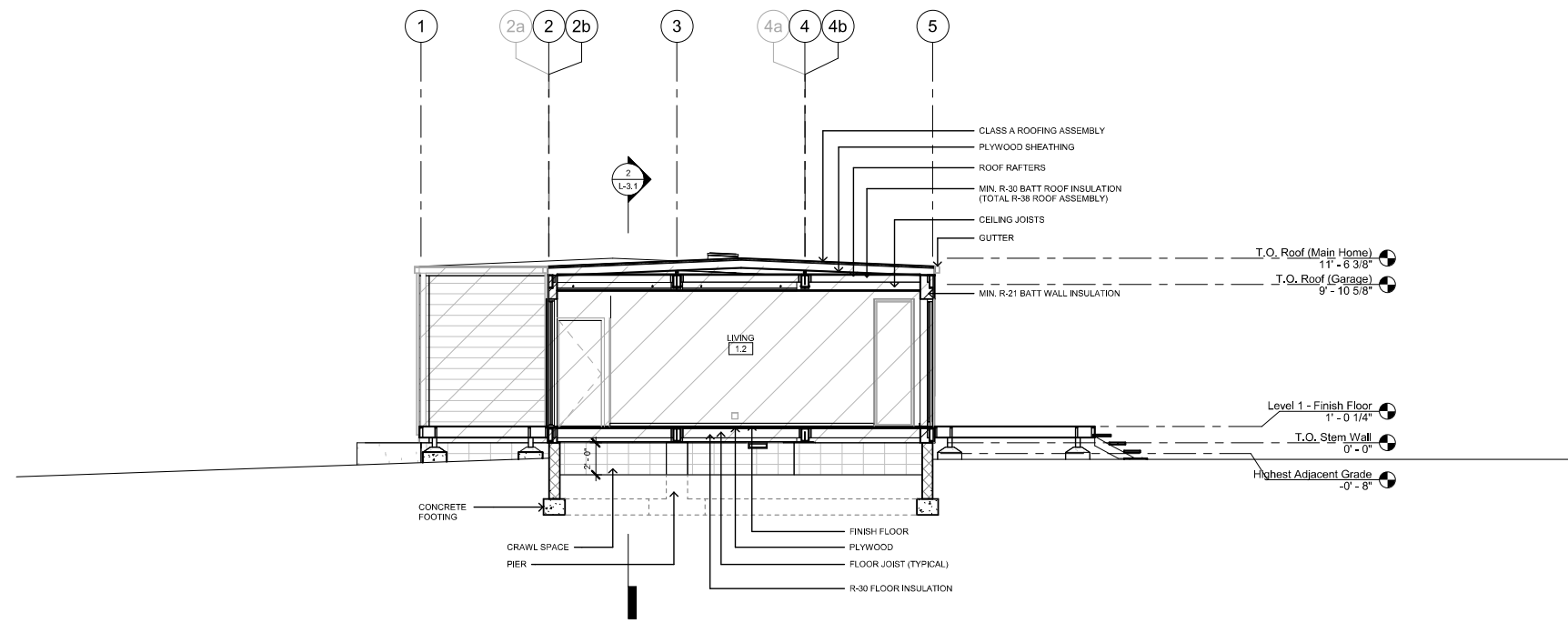
MODEL HOME  
CONNECT 6L+CG

SHEET SET  
LOCAL

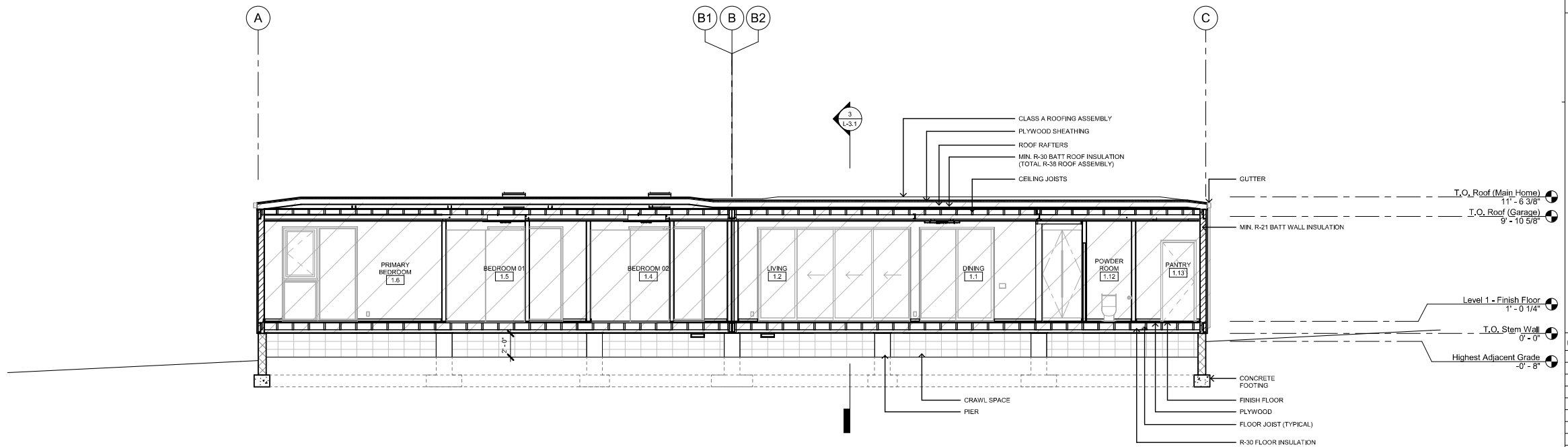
SHEET TITLE  
SITE ELEVATIONS &  
SECTIONS

SHEET, SHEET, MODEL  
SET, NUMBER, HOME

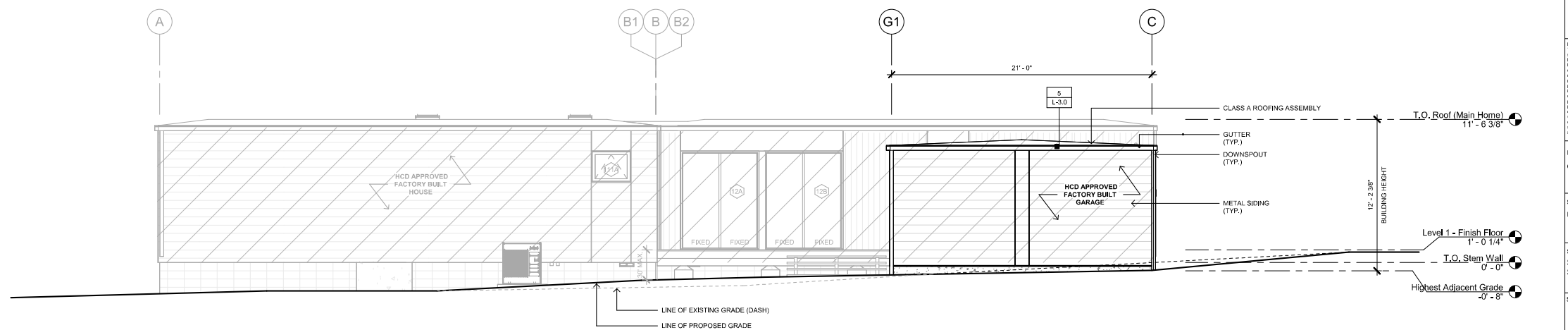
L-3.1



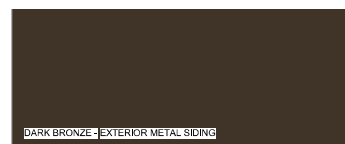
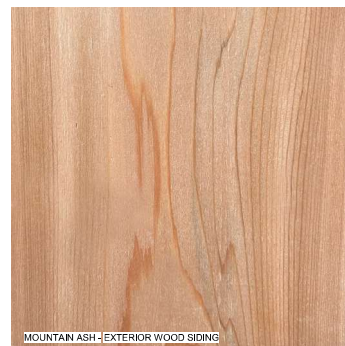
SECTION- TRANSVERSE 3  
1/4" = 1'-0"



SECTION - LONGITUDINAL 2  
1/4" = 1'-0"



ELEVATION - ARCHITECTURAL SOUTH (GARAGE) 1  
1/4" = 1'-0"



SIDING MATERIAL SPEC NO SCALE 4



304 S BROADWAY, #320  
LOS ANGELES, CA 90013  
t: 310.622.9271  
e: info@connect-homes.com

**CONNECT 6L: DANNER RESIDENCE**  
54 Viento Way,  
Point Reyes Station, CA 94956  
APN#11916226



Wood: Fijian Mahogany (True Mahogany)  
Grade: Clear, Min-dried  
Size/Pattern: Min. 3/4" x 5 1/2" with Max. 3/16" Edge to Edge spacing  
Remarks: Needs to be supported 12" O.C. Back prime all decking before installation.  
Fasteners: Stainless steel screws.  
Color:  
Stain: MOUNTAIN ASH SW3540

WOOD DECKING  
NO SCALE 4



**VERTICALLY ORIENTED TONGUE AND GROOVE WOOD SIDING**  
Wood: Western Red Cedar  
Grade: STK  
Size/Pattern: Nominal 1" x 4" x 12", Tongue and Groove Siding, V-Joint, S1S  
Dressing: Smooth  
Remarks: Back prime all siding before installation.  
Fasteners: 2-1/2" 24Ga  
Stain: MOUNTAIN ASH SW3540  
Design: Solid sawn wood siding W/NO through holes or loose knots, installed over structural plywood, tongued and grooved in a vertical orientation w/minimum nominal 4" wide and nominal 1" thick boards, "Western Red Cedar"

WOOD SIDING  
NO SCALE 3



OTHER CONNECT HOMES SAMPLE PROJECTS  
NO SCALE 4

Siding - JamesHardie Panel Siding (or similar)



Siding - JamesHardie Panel Siding (or similar)



CEMENT BOARD (ACCENT PANEL ABOVE/BELOW WINDOWS AND DOORS)  
NO SCALE 2

PVDF Color Name (Color Code)	Reflectance ASTM C 1549	Thermal Emittance ASTM C 1311	Solar Reflectance ASTM E 1891	Low Glare	Mastic Finish	ENERGY STAR® Roof Siding*	ENERGY STAR® Low Slope*	CRRC Steep Slope*	CRRC Low Slope*	LEED Steep Slope*	LEED Low Slope*
Aged Copper (65)	0.32	0.85	32		*	*	*	*	*	*	*
Antique Patina (M1)	0.38	0.85	40		*	*	*	*	*	*	*
Ash Grey (25)	0.38	0.88	41		*	*	*	*	*	*	*
Brandywine (P8)	0.26	0.85	24		*	*	*	*	*	*	*
Champagne Metallic (168)	0.47	0.85	53		*	*	*	*	*	*	*
Classic Green (66)	0.32	0.86	33		*	*	*	*	*	*	*
Colonial Red (W75)	0.35	0.88	37	*	*	*	*	*	*	*	*
Copper Penny (W92)	0.45	0.85	50		*	*	*	*	*	*	*
Dark Bronze (50)	0.30	0.86	30		*	*	*	*	*	*	*
Felt Green (W66)	0.31	0.84	31	*	*	*	*	*	*	*	*
Galvalume® (41)	0.67	0.14	56		*	*	*	*	*	*	*
Hemlock Green (M7)	0.36	0.85	35	*	*	*	*	*	*	*	*
Hwaki (88)	0.35	0.87	37		*	*	*	*	*	*	*
Linen White (81)	0.73	0.88	89		*	*	*	*	*	*	*
Mahogany Brown (133)	0.30	0.87	31		*	*	*	*	*	*	*
Matte Black (106)	0.27	0.86	26		*	*	*	*	*	*	*
Medium Bronze (H4)	0.30	0.87	31		*	*	*	*	*	*	*
Metallic Silver (K7)	0.60	0.77	68	*	*	*	*	*	*	*	*
Mistique Plus (W31)	0.34	0.82	34	*	*	*	*	*	*	*	*
Ocean Blue (35)	0.29	0.86	29		*	*	*	*	*	*	*
Old Town Grey (W25)	0.40	0.85	43	*	*	*	*	*	*	*	*
Old Zinc Grey (W29)	0.42	0.85	46	*	*	*	*	*	*	*	*
Parchment (W74)	0.41	0.88	45	*	*	*	*	*	*	*	*
Patina Green (W58)	0.46	0.85	51	*	*	*	*	*	*	*	*
Patriot Red (73)	0.46	0.85	52	*	*	*	*	*	*	*	*
Regal Blue (W36)	0.27	0.88	26	*	*	*	*	*	*	*	*
River Teal (55)	0.29	0.88	29	*	*	*	*	*	*	*	*
Sandstone (W81)	0.54	0.88	63	*	*	*	*	*	*	*	*
Slate Grey (W38)	0.30	0.85	30	*	*	*	*	*	*	*	*
Snowdrift White (W81)	0.65	0.85	78	*	*	*	*	*	*	*	*
Taupe (74)	0.30	0.86	30	*	*	*	*	*	*	*	*
Tea (76)	0.29	0.84	28	*	*	*	*	*	*	*	*
Terra Cotta (W72)	0.39	0.85	42	*	*	*	*	*	*	*	*
Weathered Copper (W50)	0.32	0.84	32	*	*	*	*	*	*	*	*

\*LOW SLOPE: Surface with a slope of 2:12 or less • STEEP SLOPE: Surface with a slope greater than 2:12  
© 2022, 1318  
**Metal Sales Branch Locations**  
Anchorage, AK: 907.560.7683  
Bay City, MI: 888.777.7640  
Denver, CO: 800.269.7863  
Detroit/Lakes, MI: 988.594.1394  
Fortuna, CA: 862.762.7653  
Fort Smith, AR: 877.452.9315  
Independence, MO: 800.747.0012  
Jacksonville, FL: 850.594.4419  
Jefferson, OH: 500.321.5633  
Mocksville, NC: 800.228.6119  
Nashville, TN: 800.251.6509  
Rock Island, IL: 800.747.1206  
Rogers, MN: 800.228.5016  
Seattle, WA: 800.431.3470  
Schaumburg, IL: 800.989.7177  
Sioux Falls, SD: 888.299.0204  
Spokane, WA: 800.572.6565  
Temple, TX: 800.543.4415  
Woodland, CA: 900.759.6019  
**metalsales.us.com**

**TMS Metal Sales Premium Roof and Wall Colors**

**PVDF Paint System**

Snowdrift White (W81)	Linen White (81)	Sandstone (W81)	Parchment (W74)	Taupe (74)
Hwaki (88)	Medium Bronze (H4)	Weathered Copper (W62)	Mahogany Brown (133)	Dark Bronze (50)
Ash Grey (25)	Old Town Grey (W25)	Old Zinc Grey (W29)	Slate Grey (W38)	Matte Black (106)
Aged Copper (65)	Patina Green (W58)	Hemlock Green (M7)	Classic Green (66)	Felt Green (W66)
Patriot Red (73)	Terra Cotta (W72)	Colonial Red (W75)	Brandywine (P8)	River Teal (55)
Metallic Silver (K7)	Champagne Metallic (168)	Mistique Plus (W31)	Copper Penny (W92)	Antique Patina (M1)
Taupe Blue (W71)	Ocean Blue (35)	Regal Blue (W36)	Galvalume® (41)	

Visit [metalsales.us.com](https://metalsales.us.com) for valuable tools and resources.

paint finish 45 year  
24 gauge Premium

METAL SIDING  
NO SCALE 1

DATE ISSUED

RELEASED ARCHITECT  
GORDON STOTT  
C-39556  
01/31/2024  
MINIMAL  
CHANGES

Legend: Disables the color selection, orange and blue icons are used to indicate the product name on the color chart. The use of these icons and specifications shall be restricted to the product of Home EC product and shall not be used in whole or in part for any purpose for which they were not intended. Home EC, Inc. Reproduction or modification by any person, in whole or in part, is prohibited. This is Home EC's property and shall not be used without the written consent of Home EC, Inc. without written consent with Home EC, Inc. without written consent. You will comply with Home EC's and shall maintain all copyright and other notices of the copyright of Home EC, Inc.

MODEL HOME  
CONNECT 6L+CG

SHEET SET  
LOCAL

SHEET TITLE  
MATERIALS AND COLORS

SHEET, SHEET / MODEL SET, NUMBER / HOME

**L-3.3**