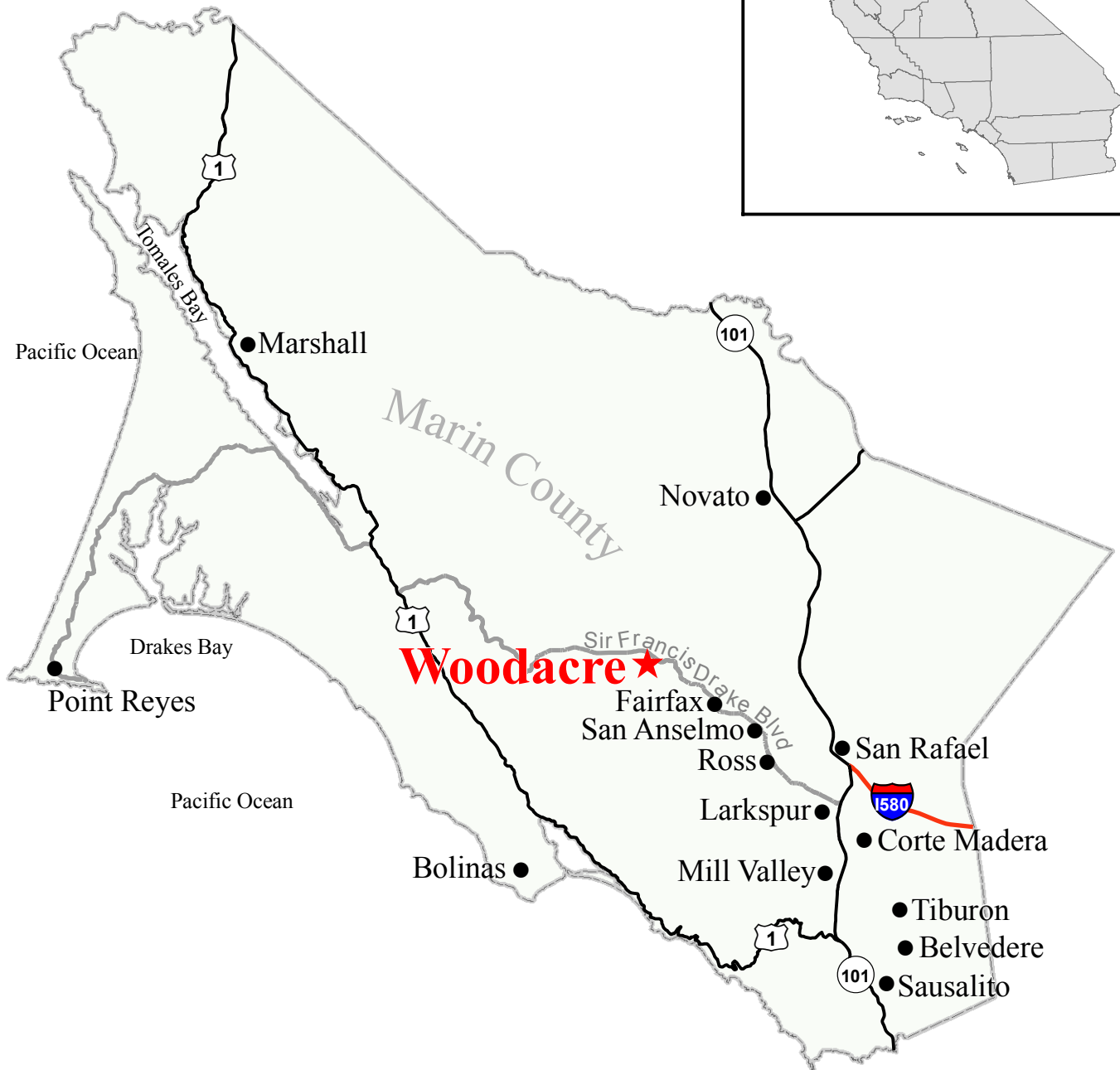




0 3.25 6.5 Miles



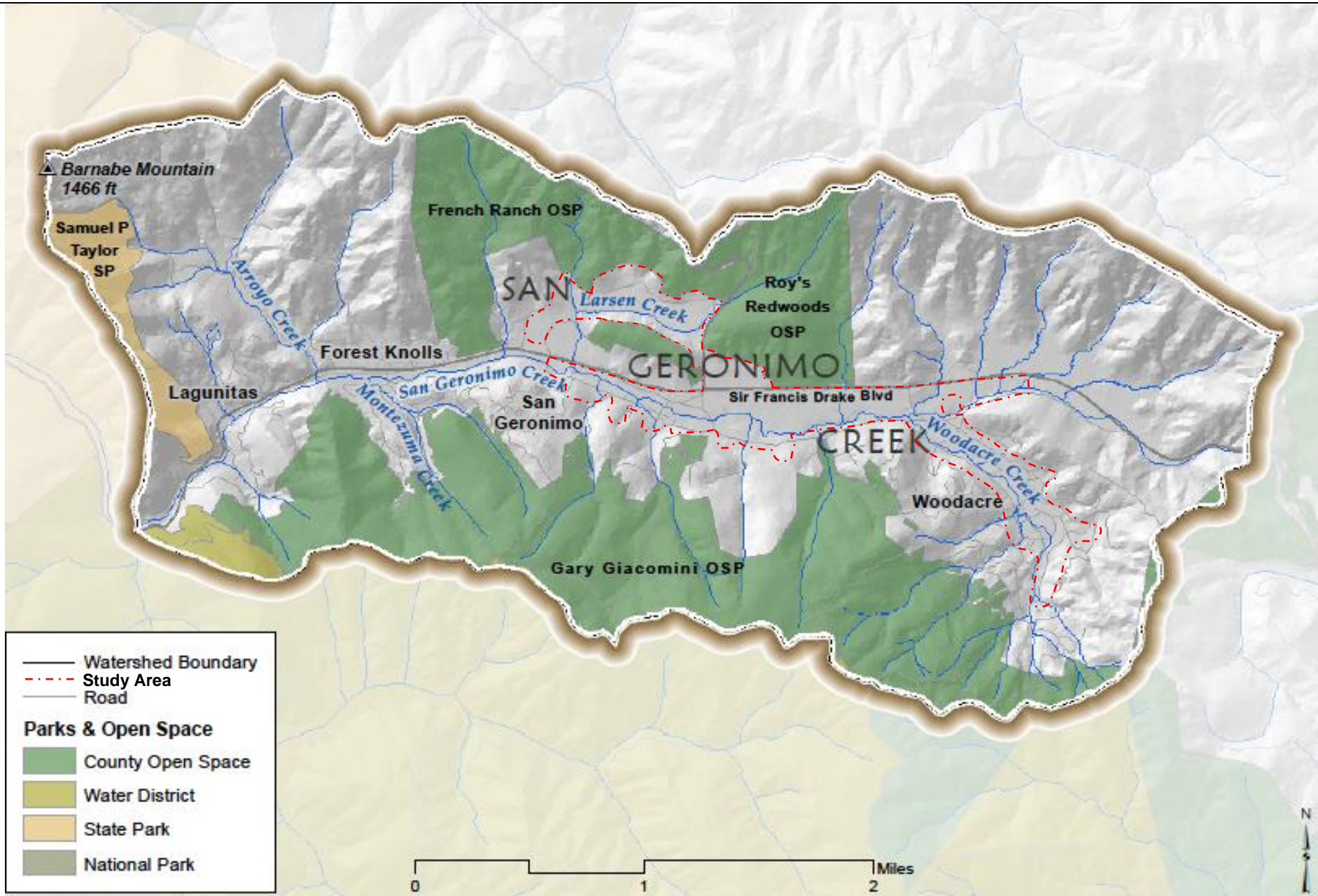
**Civil  
Environmental  
& Water Resources**

(510) 236-6114  
FAX (510) 236-2423  
questa@questaec.com

P.O. Box 70356 1220 Brickyard Cove Road Point Richmond, CA 94807

### Woodacre Wastewater Feasibility Study Woodacre, Ca

**Figure 1-1  
Location Map**



|              |                  |
|--------------|------------------|
| DATE:        | 8/12/2024        |
| PROJECT:     | WOODACRE WW      |
| PROJECT NO.: | 2200054          |
| DRAWN:       | N/A              |
| APPROVED:    | NH               |
| SOURCE:      | MARIN COUNTY DPW |



## SAN GERONIMO CREEK WATERSHED

FIGURE  
2-2

# Inkwells (201LAG230)

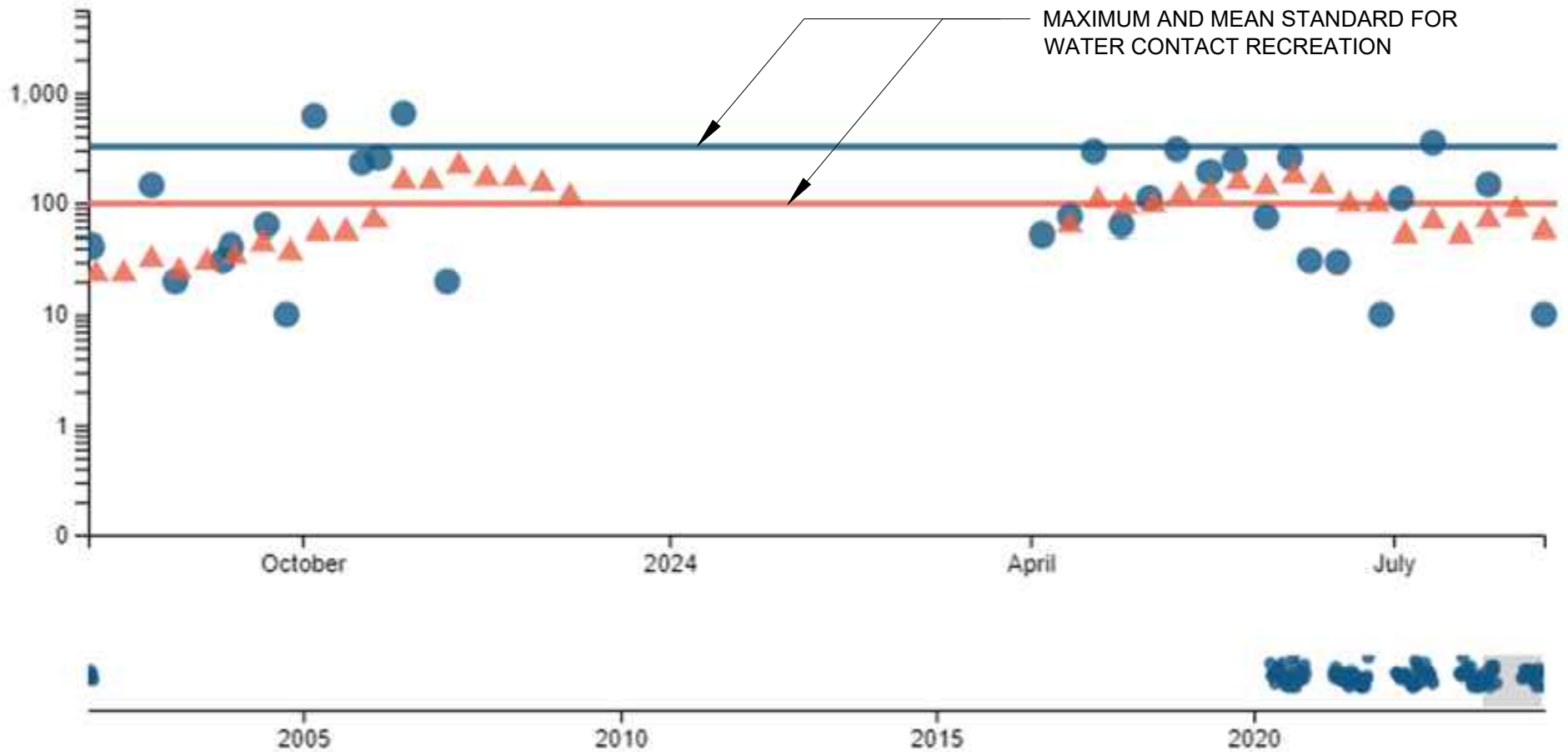
E. coli

Log Scale

Linear Scale

- Samples
- ▲ Geometric mean

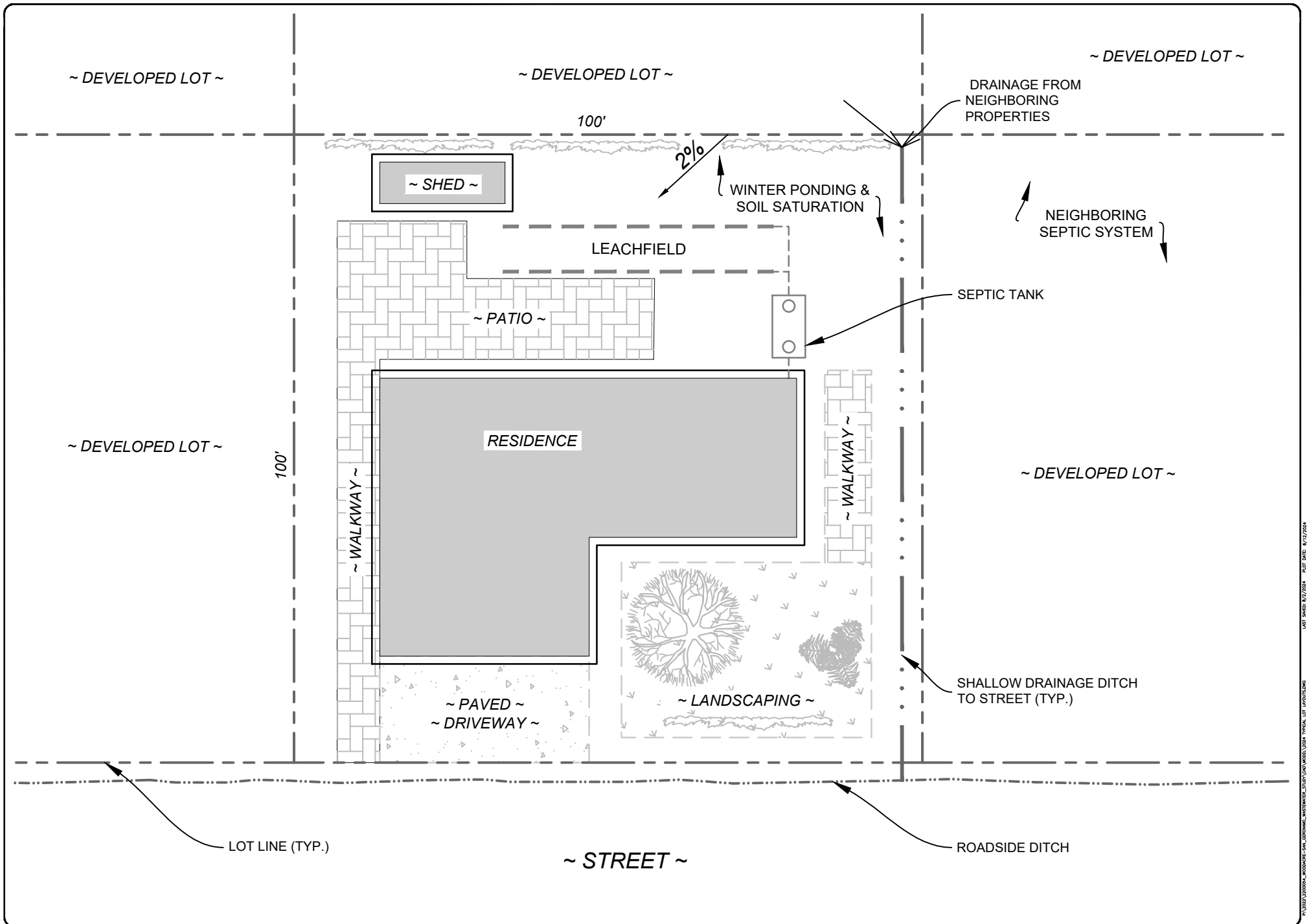
2 sample min.



| Sl# | Rev. | Date | By | Description | App'd |
|-----|------|------|----|-------------|-------|
|     |      |      |    |             |       |
|     |      |      |    |             |       |
|     |      |      |    |             |       |
|     |      |      |    |             |       |

Design: NH  
Drawn: ER  
Checked: NH  
Appr'd: NH

I:\PROJECTS\20220054\_WOODACRE\_WWTF\WATER\_STUDY\DATA\WELLS\_2005\_TYPICAL\_LOT\_AUGUST2009



**WOODACRE WASTEWATER  
FEASIBILITY STUDY**  
WOODACRE, CALIFORNIA

**QUESTA**  
ENGINEERING CORP.  
Civil  
Environmental  
& Water Resources  
(510) 236-6114  
FAX (510) 236-2423  
questa@questacorp.com  
P.O. Box 70356 1220 Brickyard Cove Road Point Richmond, CA 94807

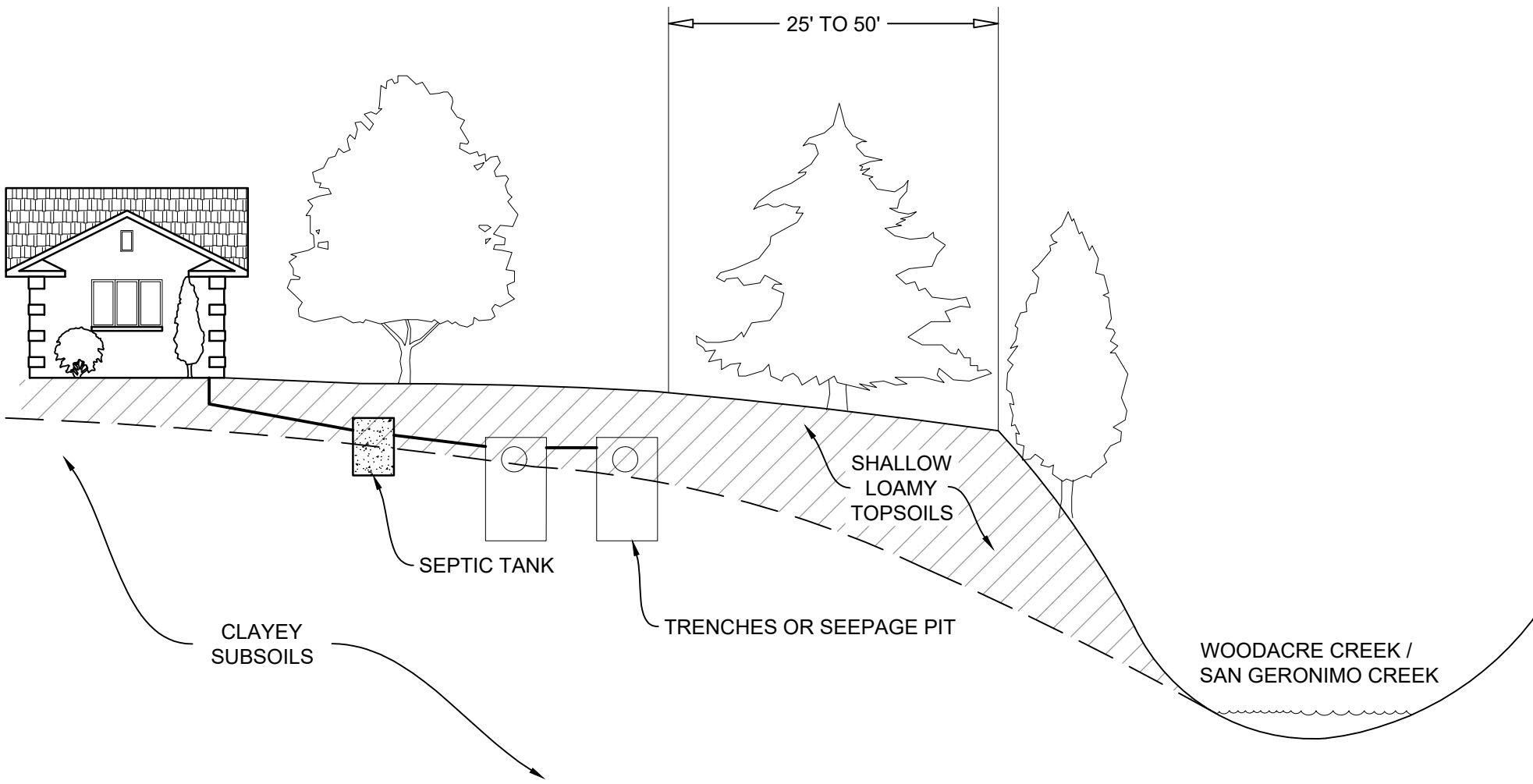
| Slit | Rev. | Date | By | Description | App'd |
|------|------|------|----|-------------|-------|
|      |      |      |    |             |       |
|      |      |      |    |             |       |
|      |      |      |    |             |       |

Design: NH/PP  
Drawn: ML  
Checked: PP  
Apprd: NH

**TYPICAL ONSITE CONDITIONS  
RAILROAD/CENTRAL AREA**

Project: 2200054  
Scale: AS NOTED  
FIGURE: 3-1

LAST PAGES 8/7/2024 PLOT DATE: 8/17/2024



**WOODACRE WASTEWATER  
FEASIBILITY STUDY**  
WOODACRE, CALIFORNIA

**QUESTA**  
ENGINEERING CORP.  
P.O. Box 70356 1220 Brickyard Cove Road Point Richmond, CA 94807

Civil  
Environmental  
& Water Resources  
(510) 236-6114  
FAX (510) 236-2423  
questa@questa.com

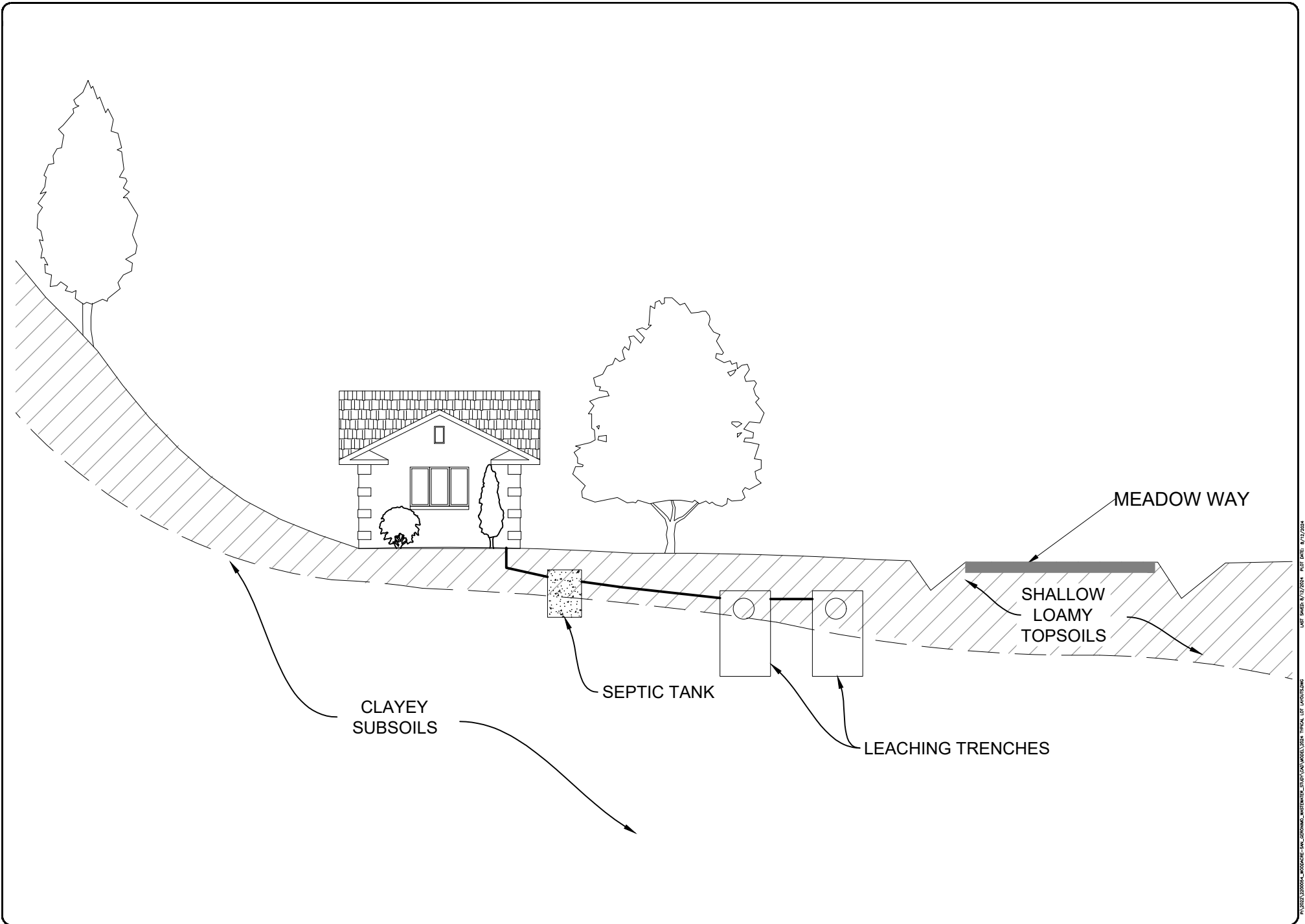
| Sl# | Rev. | Date | By | Description | App'd |
|-----|------|------|----|-------------|-------|
|     |      |      |    |             |       |
|     |      |      |    |             |       |
|     |      |      |    |             |       |
|     |      |      |    |             |       |

Design: NH/MW  
Drawn: DJ  
Checked: MW  
Appr'd: NH

**TYPICAL ONSITE CONDITIONS  
CREEKSIDE AREA**

Project: 22000554  
Scale: AS NOTED  
FIGURE: 3-2

I:\PROJECTS\22000554\WOODACRE\_SAN\_GERONIMO\_WASTEWATER\_FEASIBILITY\_STUDY\CAD\WHEEL\_DRAW\_TYPICAL\_ONSITE.CON



**WOODACRE WASTEWATER  
FEASIBILITY STUDY**  
WOODACRE, CALIFORNIA

**QUESTA**  
ENGINEERING CORP.  
P.O. Box 70356 1220 Brickyard Cove Road Point Richmond, CA 94807

Civil  
Environmental  
& Water Resources  
(510) 236-6114  
FAX (510) 236-2423  
questa@questacorp.com

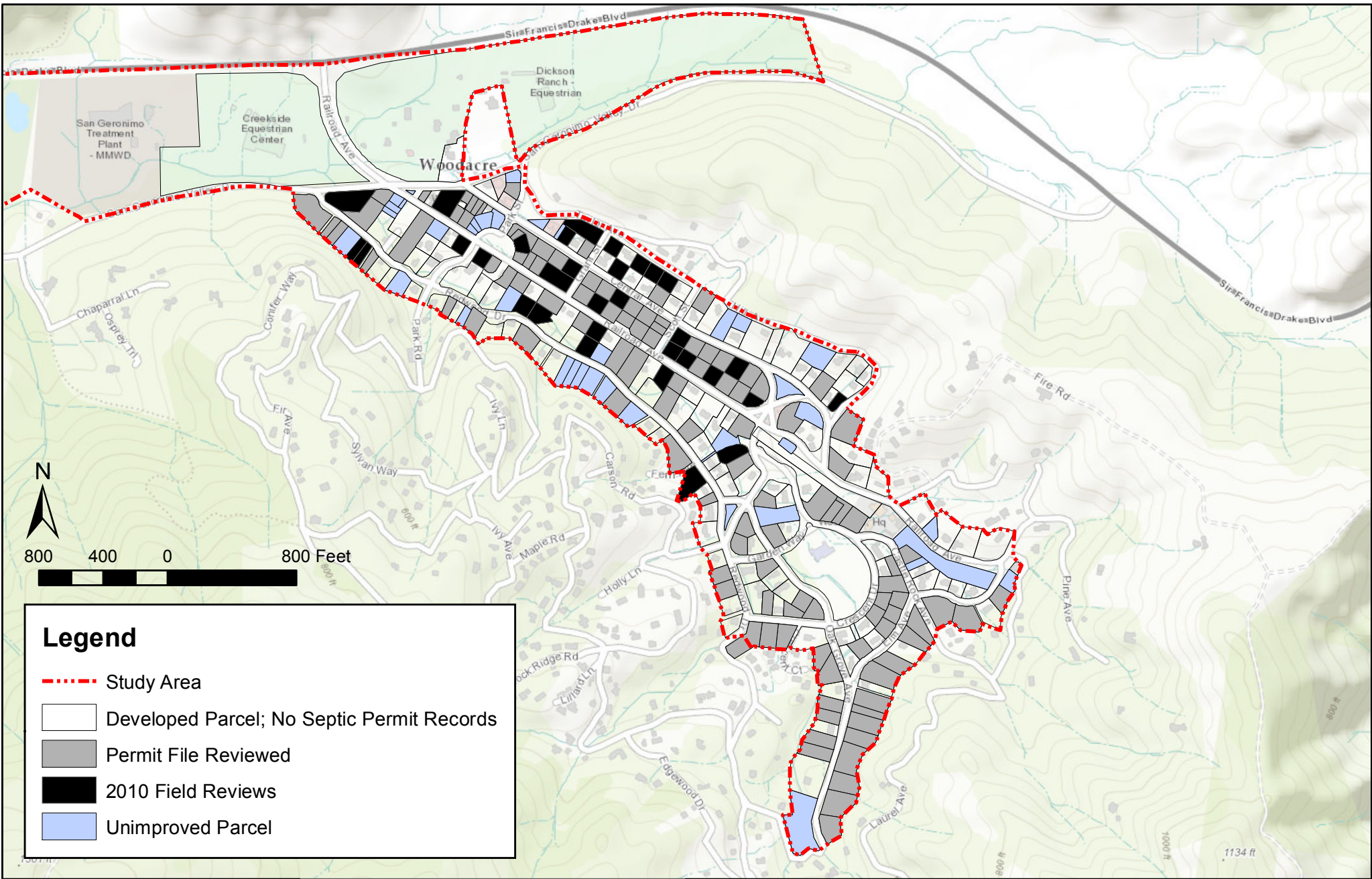
| Sl# | Rev. | Date | By | Description | App'd |
|-----|------|------|----|-------------|-------|
|     |      |      |    |             |       |
|     |      |      |    |             |       |
|     |      |      |    |             |       |
|     |      |      |    |             |       |

Design: NH/MW  
Drawn: DJ  
Checked: MW  
Appr'd: NH

**TYPICAL ONSITE CONDITIONS**  
**MEADOW WAY**  
**SLOPING SITES**

Project: 2200054  
Scale: AS NOTED  
FIGURE: 3-3

I:\PROJECTS\2200054\WOODACRE\_WWTFEAS\WOODACRE\_WWTFEAS\_TYPICAL\_SLOPING\_SITES.dwg PLOT DATE: 8/17/2024

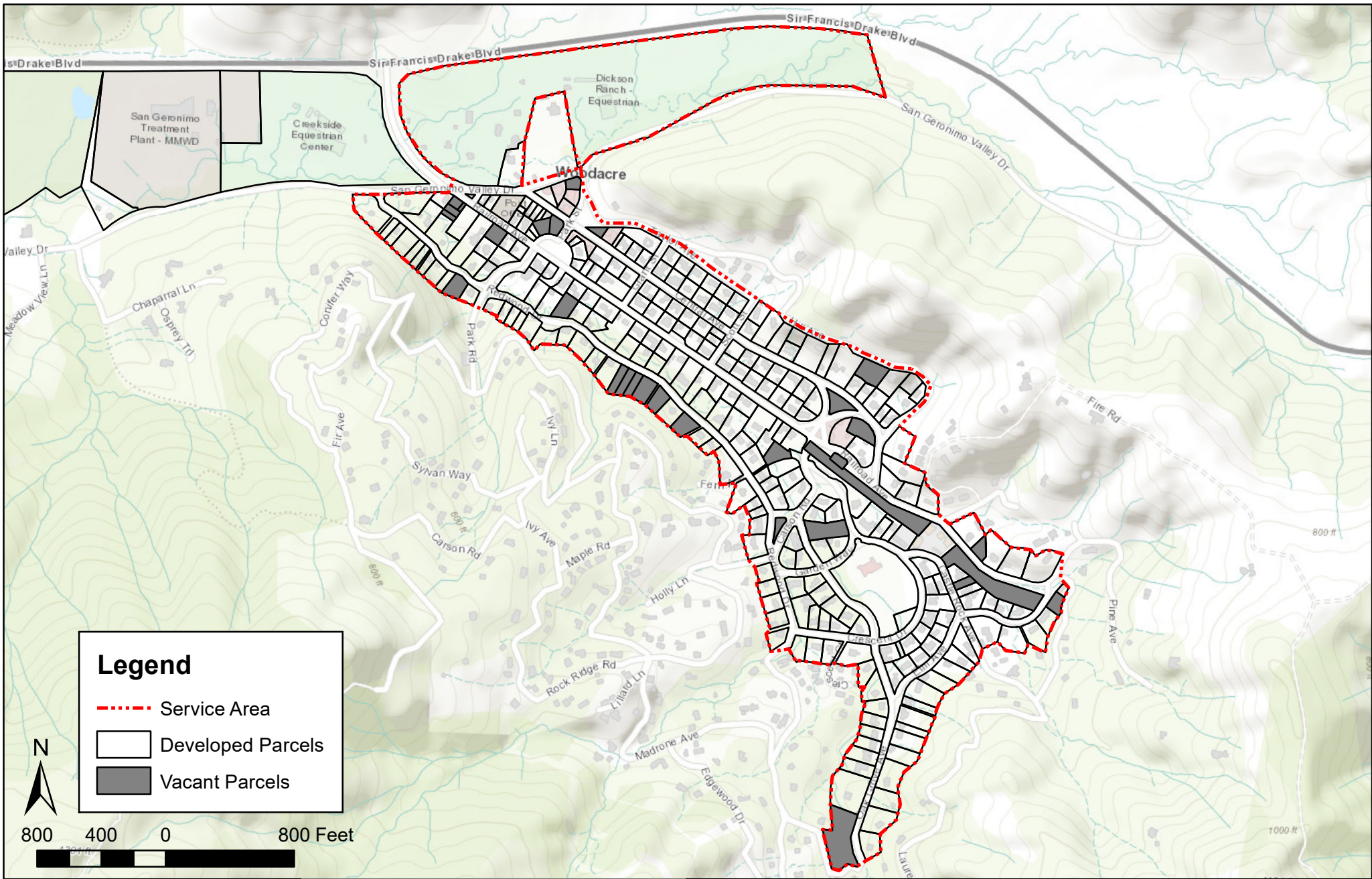


|             |             |
|-------------|-------------|
| DATE:       | 8/12/2024   |
| PROJECT:    | WOODACRE WW |
| PROJECT NO: | 2200054     |
| DRAWN:      | DD          |
| APPROVED:   | NH          |



**WOODACRE  
SEPTIC SYSTEM PERMIT  
AND FIELD REVIEWS**

**FIGURE  
3-4**



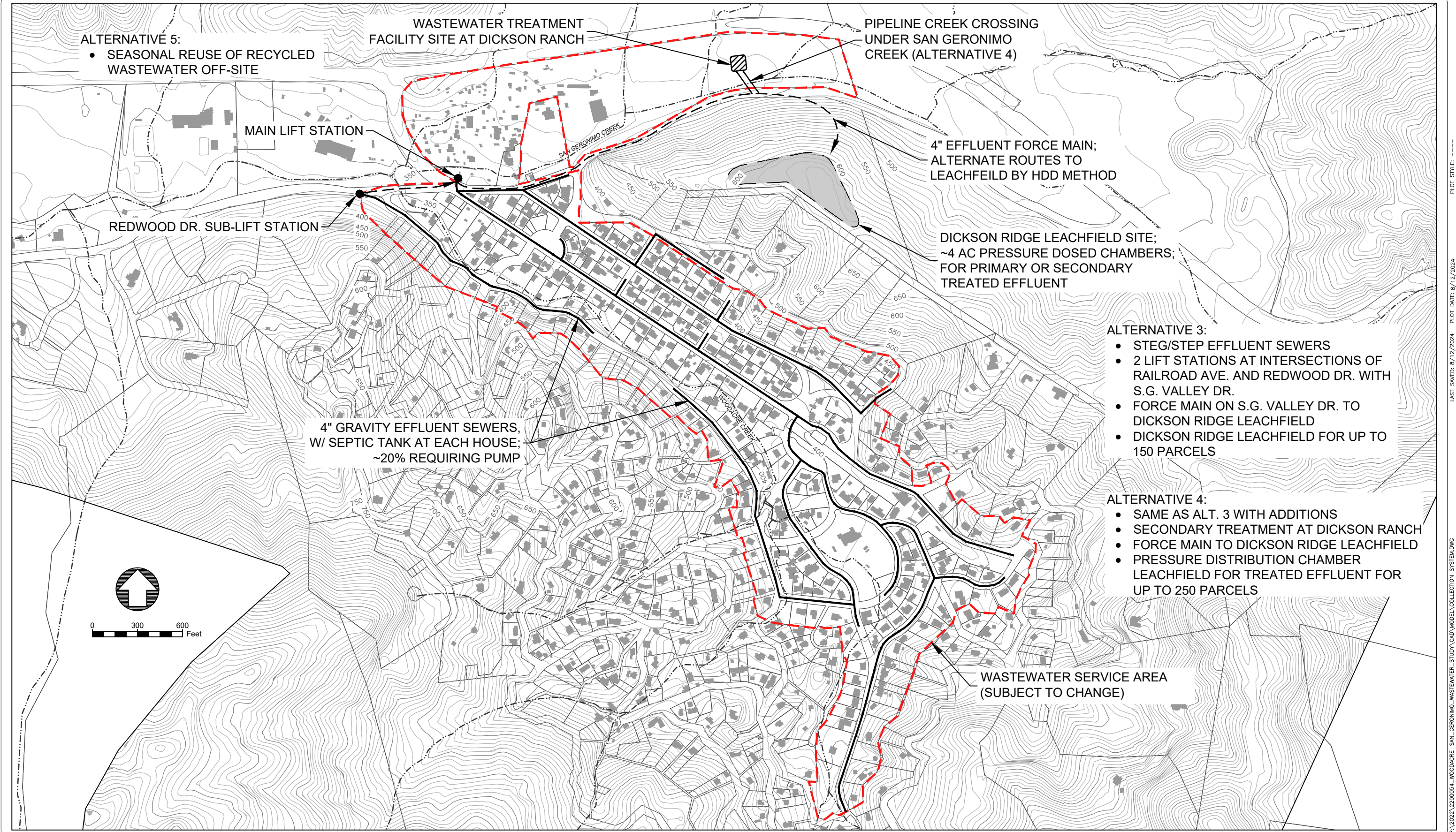
|             |             |
|-------------|-------------|
| DATE:       | 5/18/2023   |
| PROJECT:    | WOODACRE WW |
| PROJECT NO: | 2200054     |
| DRAWN:      | DD          |
| APPROVED:   | NH          |



**PRELIMINARY SERVICE AREA  
WOODACRE WASTEWATER STUDY**

**FIGURE  
4-1**





**ALTERNATIVE 5:**

- SEASONAL REUSE OF RECYCLED WASTEWATER OFF-SITE

WASTEWATER TREATMENT FACILITY SITE AT DICKSON RANCH

PIPELINE CREEK CROSSING UNDER SAN GERONIMO CREEK (ALTERNATIVE 4)

MAIN LIFT STATION

4" EFFLUENT FORCE MAIN; ALTERNATE ROUTES TO LEACHFIELD BY HDD METHOD

REDWOOD DR. SUB-LIFT STATION

DICKSON RIDGE LEACHFIELD SITE; ~4 AC PRESSURE DOSED CHAMBERS; FOR PRIMARY OR SECONDARY TREATED EFFLUENT

4" GRAVITY EFFLUENT SEWERS, W/ SEPTIC TANK AT EACH HOUSE; ~20% REQUIRING PUMP

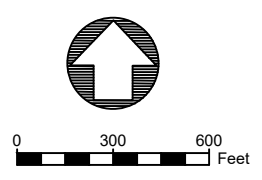
**ALTERNATIVE 3:**

- STEG/STEP EFFLUENT SEWERS
- 2 LIFT STATIONS AT INTERSECTIONS OF RAILROAD AVE. AND REDWOOD DR. WITH S.G. VALLEY DR.
- FORCE MAIN ON S.G. VALLEY DR. TO DICKSON RIDGE LEACHFIELD
- DICKSON RIDGE LEACHFIELD FOR UP TO 150 PARCELS

**ALTERNATIVE 4:**

- SAME AS ALT. 3 WITH ADDITIONS
- SECONDARY TREATMENT AT DICKSON RANCH
- FORCE MAIN TO DICKSON RIDGE LEACHFIELD
- PRESSURE DISTRIBUTION CHAMBER LEACHFIELD FOR TREATED EFFLUENT FOR UP TO 250 PARCELS

WASTEWATER SERVICE AREA (SUBJECT TO CHANGE)



**WOODACRE WASTEWATER FEASIBILITY STUDY**

WOODACRE, CA

**QUESTA**  
ENGINEERING CORP.

Civil Environmental & Water Resources

(510) 236-6114  
FAX (510) 238-2423  
questa@questaec.com  
P.O. Box 70356 1220 Brickyard Cove Road Point Richmond, CA 94807

| Sht: | Rev: | Date: | By: | Description: | App'd: |
|------|------|-------|-----|--------------|--------|
|      |      |       |     |              |        |
|      |      |       |     |              |        |
|      |      |       |     |              |        |

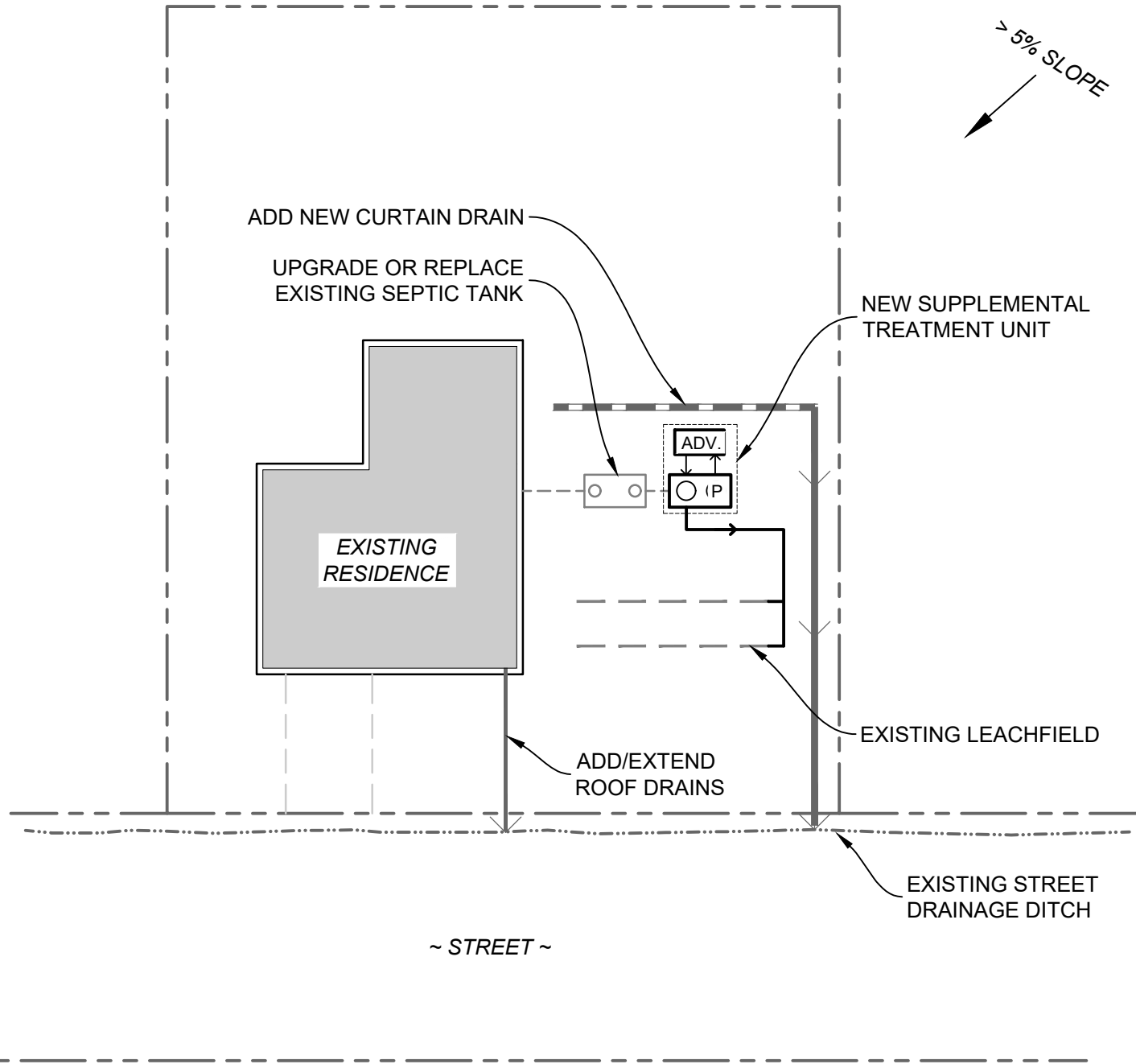
Design: NH  
Drawn: ER  
Checked: NH  
Appr'd: NH

**PROJECT ALTERNATIVES OVERVIEW**

WOODACRE, CA

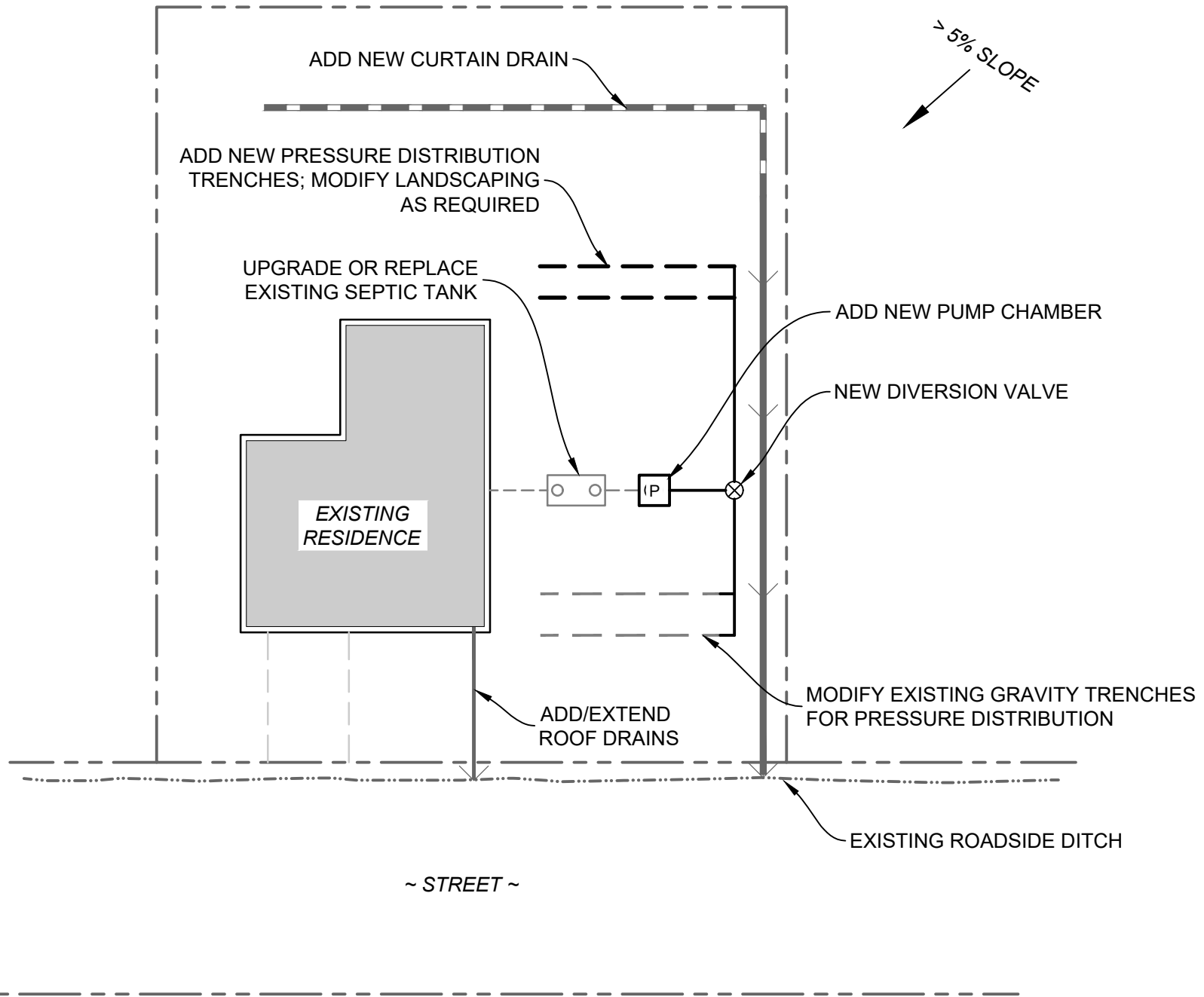
FIGURE 5-1

P:\2022\2200054\_WOODACRE\_SAN\_GERONIMO\_WASTEWATER\_STUDY\CAD\_MODEL\_COLLECTION\_SYSTEM.DWG LAST SAVED: 8/12/2024 PLOT DATE: 8/12/2024 PLOT STYLE: -----



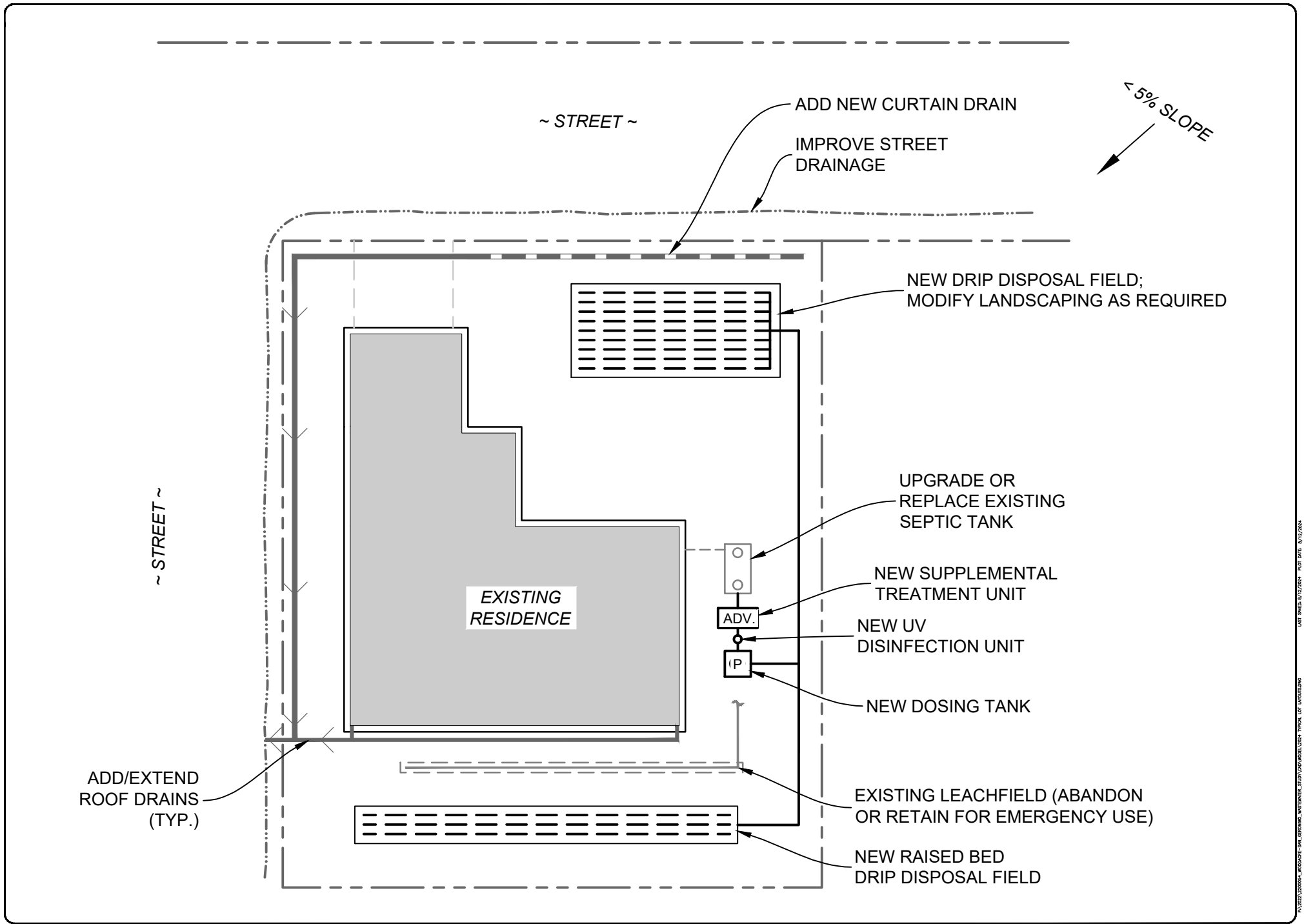
| Sl# | Rev. | Date | By | Description | App'd |
|-----|------|------|----|-------------|-------|
|     |      |      |    |             |       |
|     |      |      |    |             |       |
|     |      |      |    |             |       |
|     |      |      |    |             |       |

|          |       |
|----------|-------|
| Design:  | NH/PP |
| Drawn:   | ML    |
| Checked: | PP    |
| Appr'd:  | NH    |



| Sl# | Rev. | Date | By | Description | App'd |
|-----|------|------|----|-------------|-------|
|     |      |      |    |             |       |
|     |      |      |    |             |       |
|     |      |      |    |             |       |
|     |      |      |    |             |       |

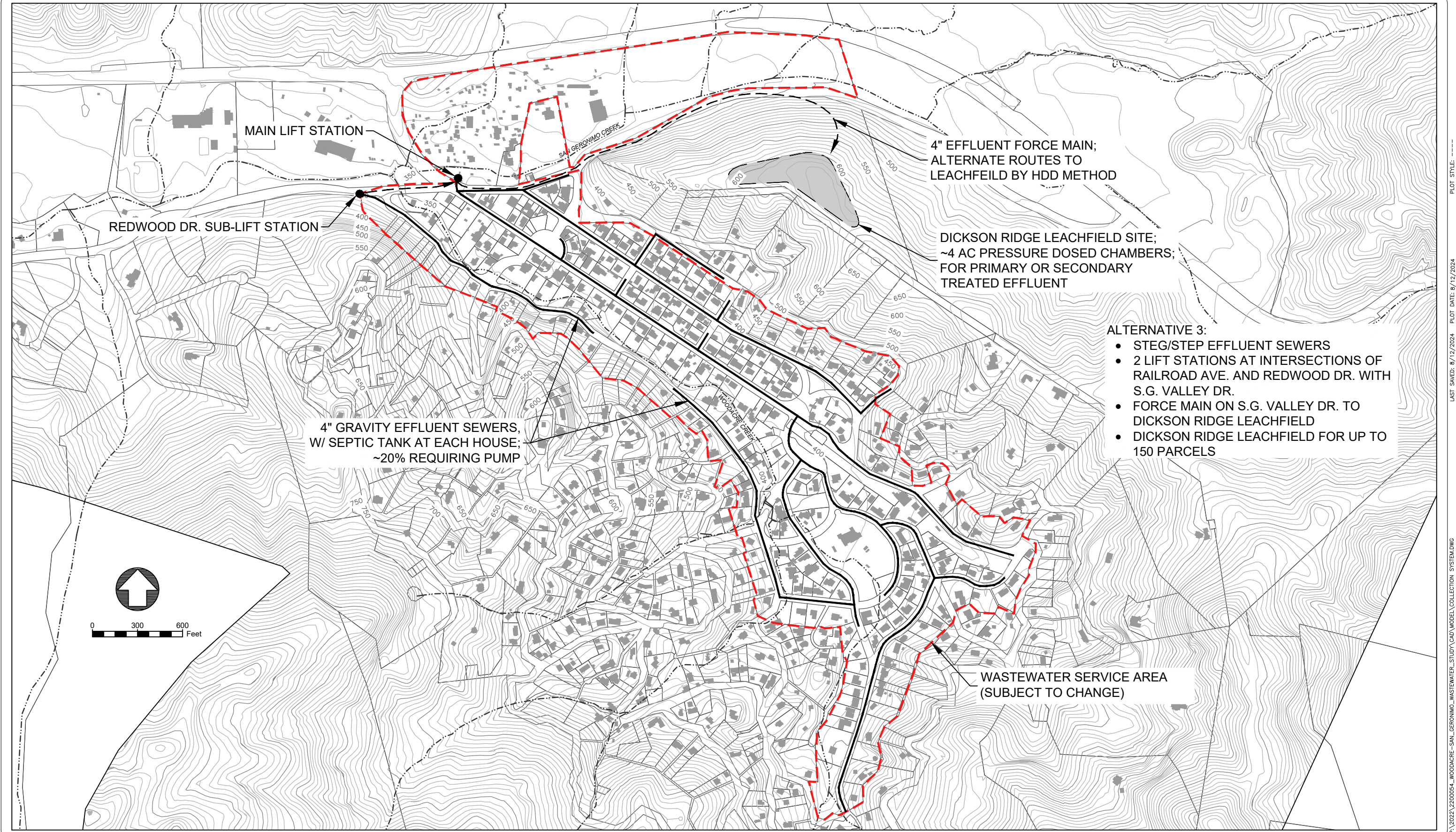
|          |       |
|----------|-------|
| Design:  | NH/PP |
| Drawn:   | ML    |
| Checked: | PP    |
| Appr'd:  | NH    |



| Slit | Rev. | Date | By | Description | App'd |
|------|------|------|----|-------------|-------|
|      |      |      |    |             |       |
|      |      |      |    |             |       |
|      |      |      |    |             |       |
|      |      |      |    |             |       |
|      |      |      |    |             |       |

|          |       |
|----------|-------|
| Design:  | NH/PP |
| Drawn:   | ML    |
| Checked: | PP    |
| Apprd:   | NH    |

WOODACRE, SAN JOAQUIN WASTEWATER TREATMENT PLANT, TYPICAL LOT LAYOUT



P:\2022\2200054\_WOODACRE-SAN\_GERONIMO\_WASTEWATER\_STUDY\CAD\_MODEL\_COLLECTION\_SYSTEM.DWG  
 LAST SAVED: 8/12/2024 PLOT DATE: 8/12/2024 PLOT STYLE:

**WOODACRE WASTEWATER FEASIBILITY STUDY**

WOODACRE, CA

  
**QUESTA**  
 ENGINEERING CORP.  
 Civil Environmental & Water Resources  
 (510) 236-6114  
 FAX (510) 238-2423  
 questa@questaec.com  
 P.O. Box 70356 1220 Brickyard Cove Road Point Richmond, CA 94807

| Sht: | Rev: | Date: | By: | Description: | App'd: |
|------|------|-------|-----|--------------|--------|
|      |      |       |     |              |        |
|      |      |       |     |              |        |
|      |      |       |     |              |        |

|          |    |
|----------|----|
| Design:  | NH |
| Drawn:   | ER |
| Checked: | NH |
| Appr'd:  | NH |

**ALTERNATIVE 3 - SEPTIC TANK EFFLUENT WITH COMMUNITY LEACHEFIELD**  
 WOODACRE, CA

FIGURE  
**5-5**

**LEGEND**

**TREES:**

- REDWOOD
- MADRONE
- COAST LIVE OAK
- FIR
- BAY

— PRIMARY FIELD LEACHING TRENCH

— RESERVE FIELD LEACHING TRENCH

- - - TREE SETBACKS

- - - 3' X DIA. FOR REDWOOD, BAY, FIR, AND OAK

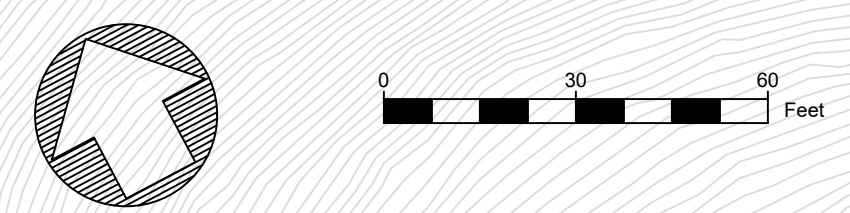
- - - 6' X DIA. FOR MADRONE

⊗ PERCOLATION TEST HOLE

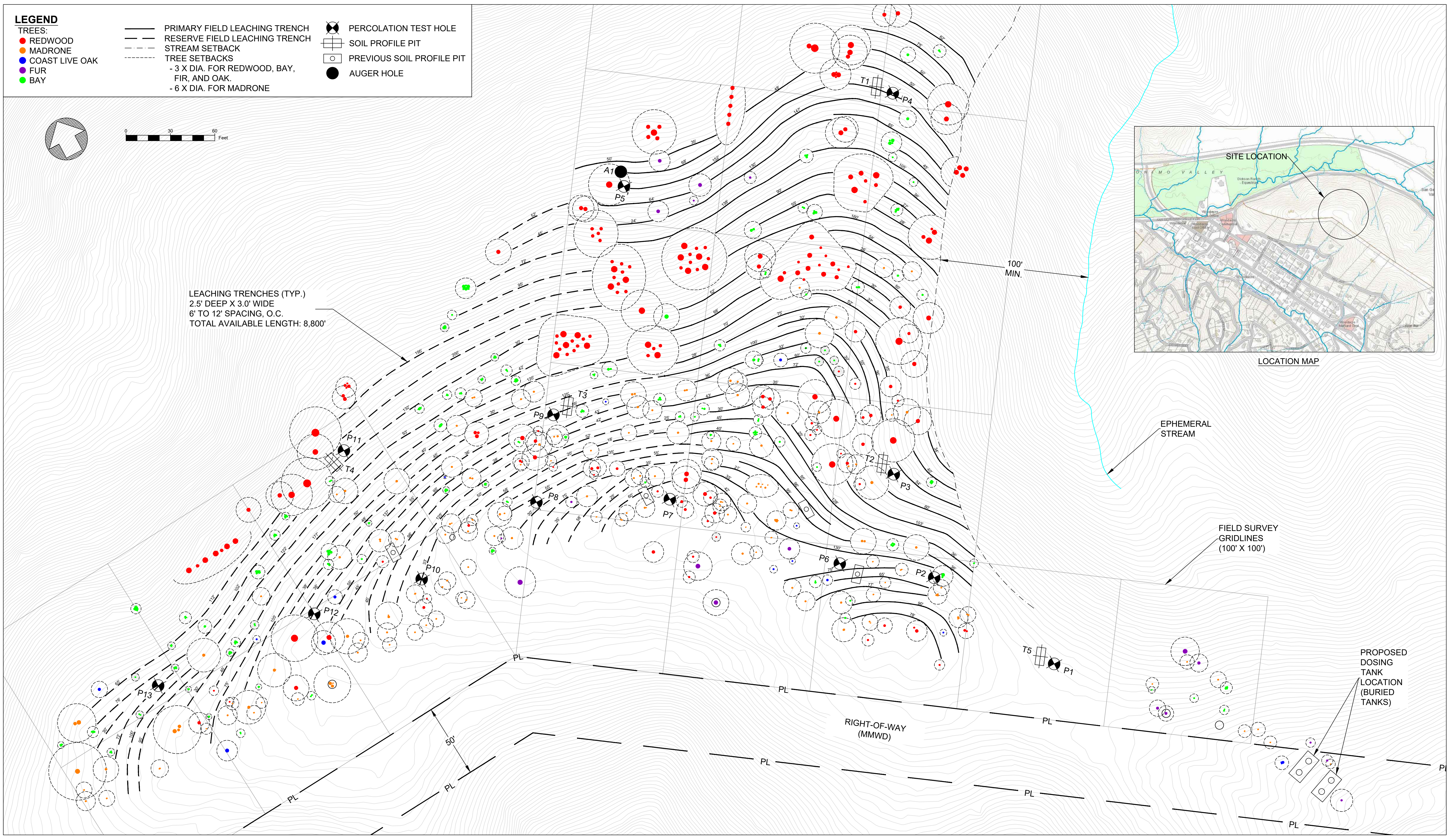
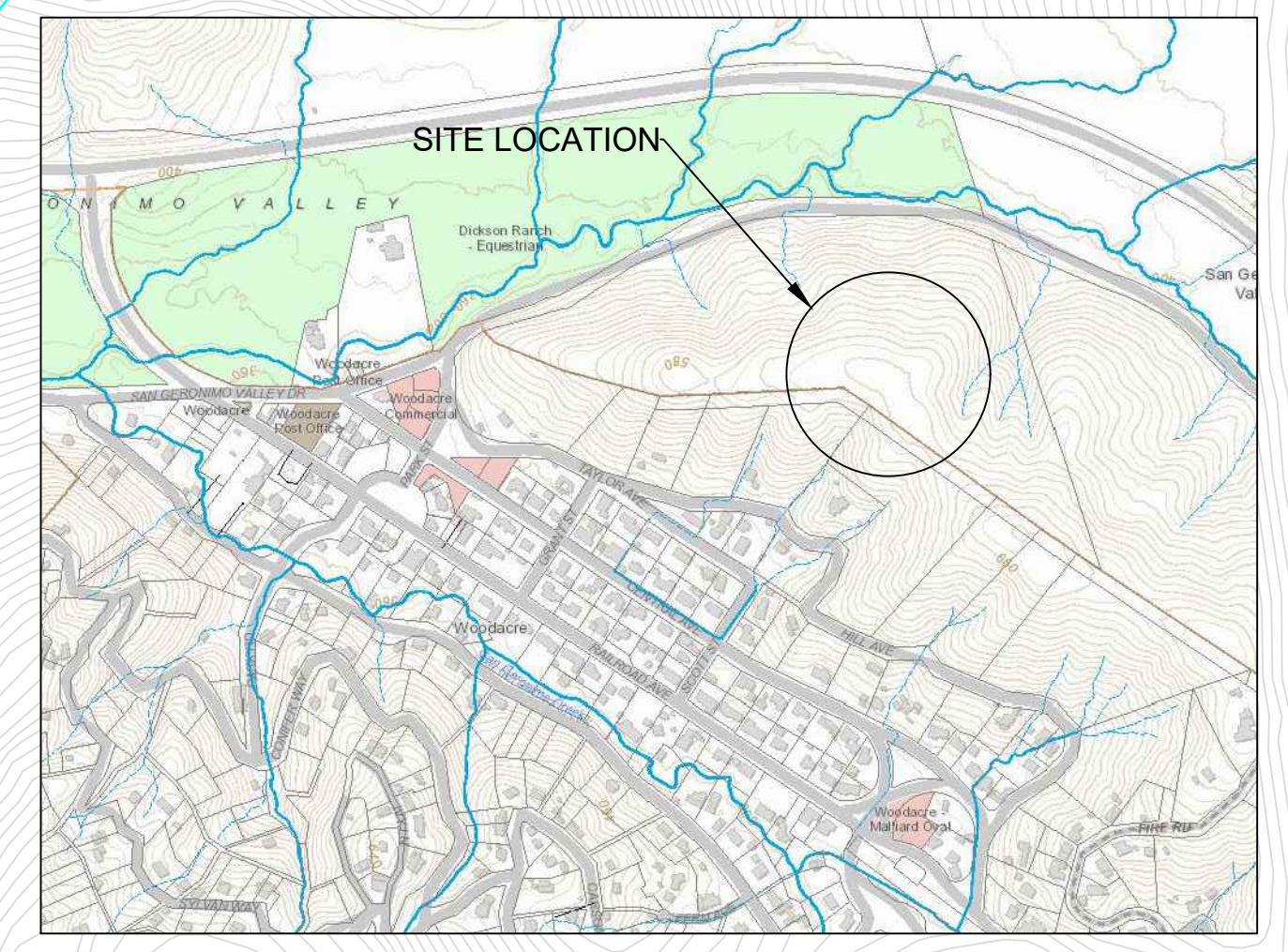
⊠ SOIL PROFILE PIT

○ PREVIOUS SOIL PROFILE PIT

● AUGER HOLE



LEACHING TRENCHES (TYP.)  
 2.5' DEEP X 3.0' WIDE  
 6' TO 12' SPACING, O.C.  
 TOTAL AVAILABLE LENGTH: 8,800'



**WOODACRE WASTEWATER  
 FEASIBILITY STUDY**

WOODACRE, CA

**QUESTA**  
 ENGINEERING CORP.

Civil  
 Environmental  
 & Water Resources

(510) 236-6114  
 FAX (510) 236-2423  
 questa@questaac.com  
 P.O. Box 70356 1220 Brickyard Cove Road Point Richmond, CA 94807

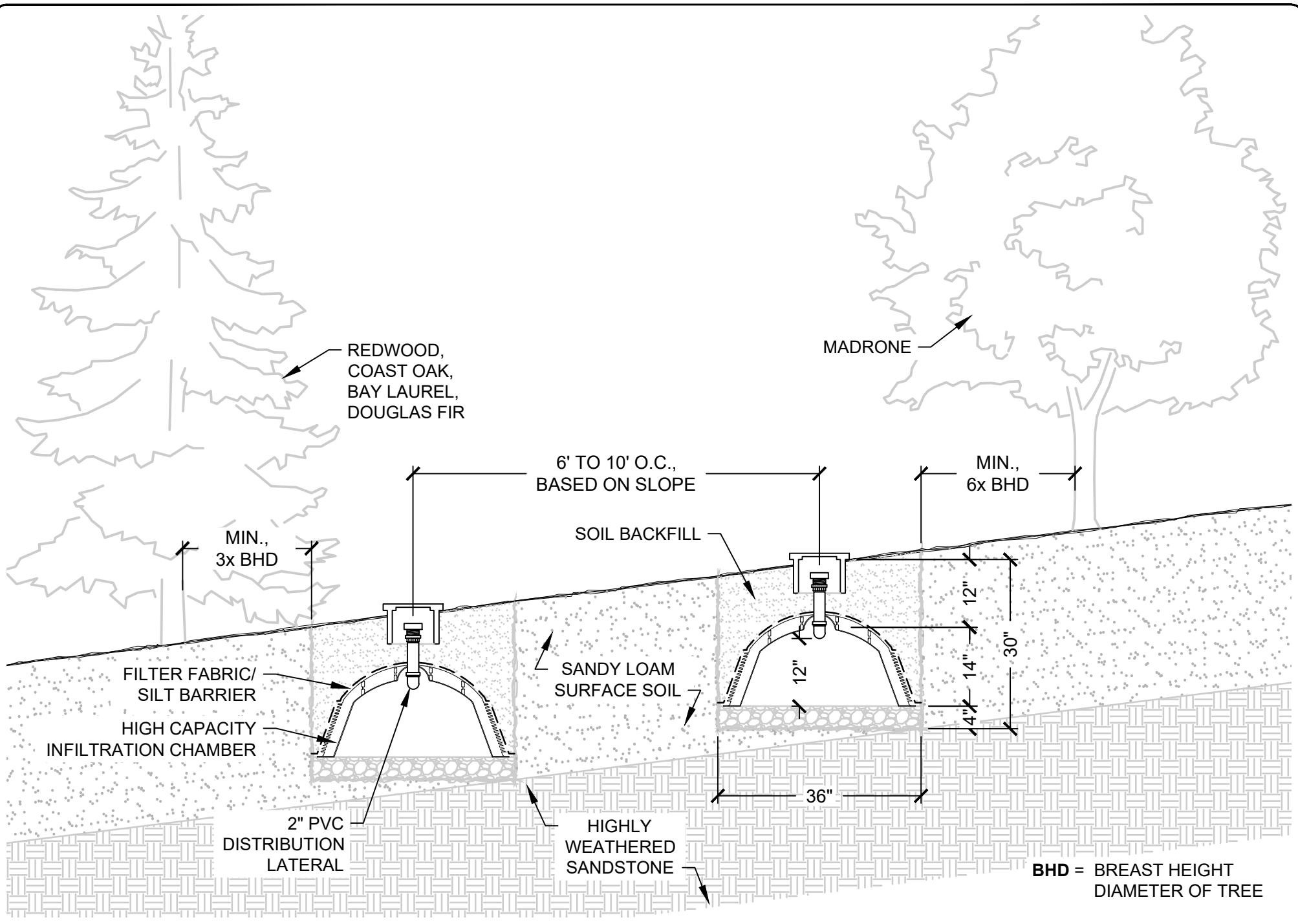
| Sht. | Rev. | Date: | By: | Description: | App'd: |
|------|------|-------|-----|--------------|--------|
|      |      |       |     |              |        |
|      |      |       |     |              |        |
|      |      |       |     |              |        |

Design: NH  
 Drawn: ER  
 Checked: NH  
 App'd: NH

**DICKSON RIDGE LEACHFIELD AREA**

**FIGURE  
 5-6**

PA\_2022\_12200054\_WOODACRE-SAN\_GERONIMO\_WASTEWATER\_STUDY\_COA\_MODEL\_FIELDMAP.DWG  
 LAST SAVED: 8/12/2024 10:54:11 AM  
 PLOT DATE: 8/12/2024  
 PLOT STYLE:   
 IF BAR DOES NOT MEASURE, IT DRAWING IS NOT TO SCALE - ADJUST ACCORDINGLY



WOODACRE WASTEWATER  
FEASIBILITY STUDY

WOODACRE, CALIFORNIA

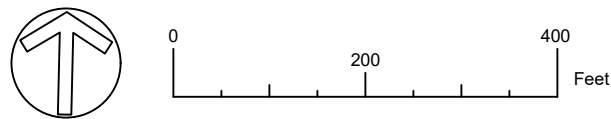
**QUESTA**  
ENGINEERING CORP.  
Civil Environmental & Water Resources  
(510) 236-6114  
FAX (510) 236-2622  
questa@questacorp.com  
P.O. Box 70356 1220 Brickyard Cove Road Point Richmond, CA 94807

| Sheet | Rev. | Date | By | Description | App'd | Design |
|-------|------|------|----|-------------|-------|--------|
|       |      |      |    |             |       | NH     |
|       |      |      |    |             |       | MN     |
|       |      |      |    |             |       | NH     |
|       |      |      |    |             |       | NH     |

CHAMBER-PRESSURE DISTRIBUTION  
LEACHFIELD DETAIL

FIGURE  
5-7

LAST DATE: 6/2/2024 PLOT DATE: 6/12/2024 PLOT STYLE: ...  
 P:\3232\WOODACRE\WOODACRE\_SALES\_SUPPORT\12117\CAD\DWG\LEACHFIELD\_DETAIL.DWG



**WOODACRE**  
 WASTEWATER FEASIBILITY STUDY  
 WOODACRE, CALIFORNIA

**QUESTA**  
 ENGINEERING CORP.  
 Civil Environmental & Water Resources  
 (510) 236-6114  
 FAX (510) 236-2423  
 P.O. Box 70356 1220 Brickyard Cove Road Point Richmond, CA 94807

| Sht. | Rev. | Date: | By: | Description: | App'd: |
|------|------|-------|-----|--------------|--------|
|      |      |       |     |              |        |
|      |      |       |     |              |        |
|      |      |       |     |              |        |

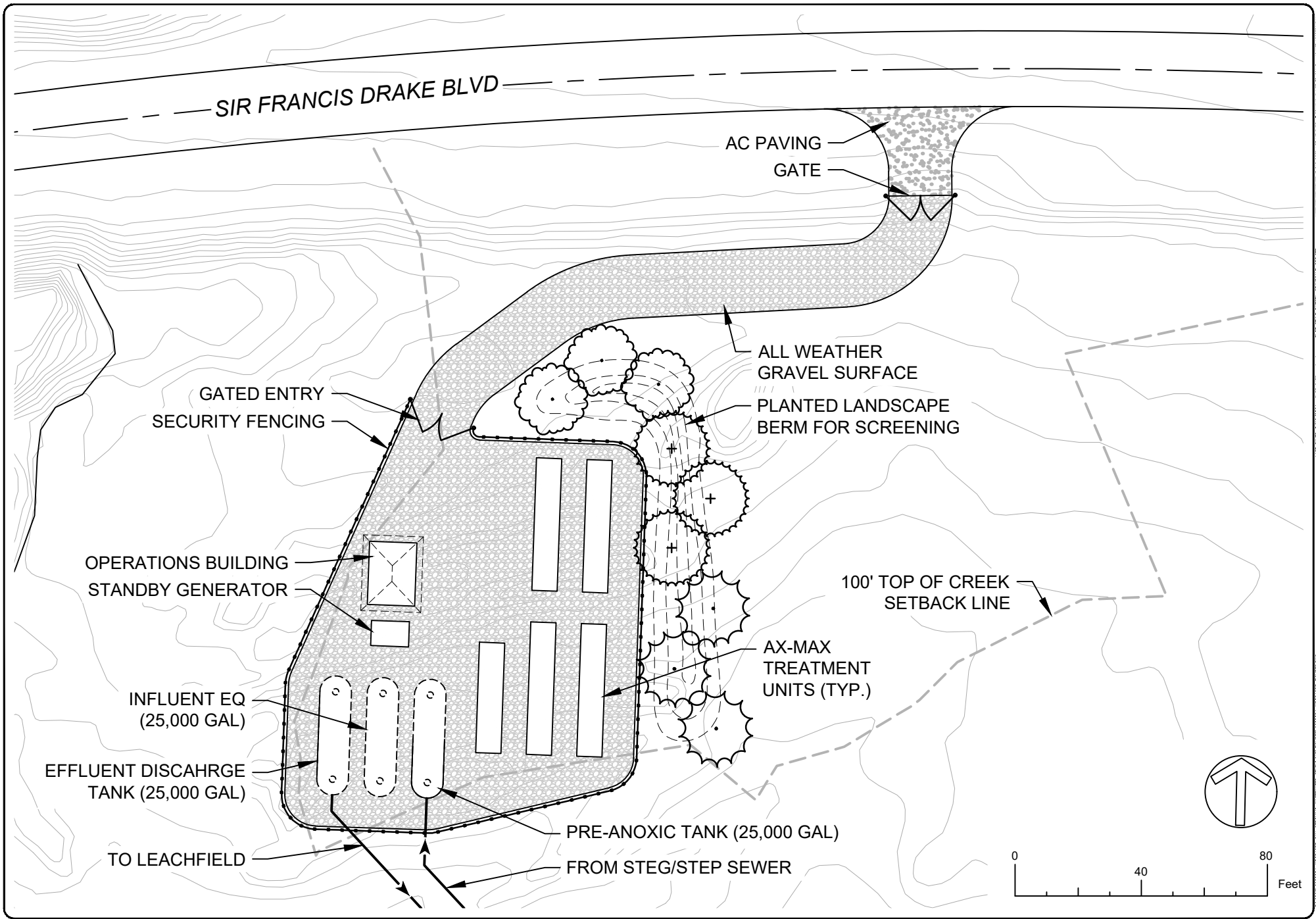
Design: NH  
 Drawn: MN  
 Checked: NH  
 Appr'd: NH

**ALTERNATIVE 4 - SECONDARY TREATMENT WITH COMMUNITY LEACHFIELD**  
 WOODACRE, CALIFORNIA

**FIGURE 5-8**

LAST SAVED: 8/12/2024 PLOT DATE: 8/12/2024 PLOT STYLE: QUESTA-GRAYSCALE-255.DWG PLOT: QUESTA-GRAYSCALE-255.DWG  
 P:\2022\2200054\_WOODACRE-SAN\_GERONIMO\_WASTEWATER\_STUDY\CAD\FIGURES\2200054\_WOODACRE-FIGURES.DWG





WOODACRE  
WASTEWATER FEASIBILITY STUDY  
WOODACRE, CALIFORNIA

**QUESTA**  
ENGINEERING CORP.  
Civil Environmental & Water Resources  
(916) 298-8114  
FAX (916) 298-0423  
QUESTA@QUESTA-ENG.COM  
P.O. Box 70356 1220 Brickyard Cove Road Point Richmond, CA 94807

| Slc# | Rev | Date | By | Description | App'd |
|------|-----|------|----|-------------|-------|
|      |     |      |    |             |       |
|      |     |      |    |             |       |
|      |     |      |    |             |       |

Design: NH  
Drawn: MN  
Checked: NH  
App'd: NH

**WATER & WASTEWATER FACILITIES  
LAYOUT PLAN**  
WOODACRE, CALIFORNIA

**FIGURE  
5-9**

LAST DRAFT: 8/17/2024 PLOT DATE: 8/17/2024 PLOT STYLE QUESTA-CADSWSCALE-250.DWG PLOT SCALE: 1"=40' ACCURACY: 1/8"=1' 1/2"